





Going Back to School



Alumni's Classroom Health Shield

A successful restart of a school is measured from the moment a student or staff member steps onto the school campus.

Thinking of the school as multiple cellular zones could be a way to successfully quarantine groups of students and teachers. If COVID -19 makes it into the school, there is confidence that the exposed group remains small and their movement patterns are traceable.

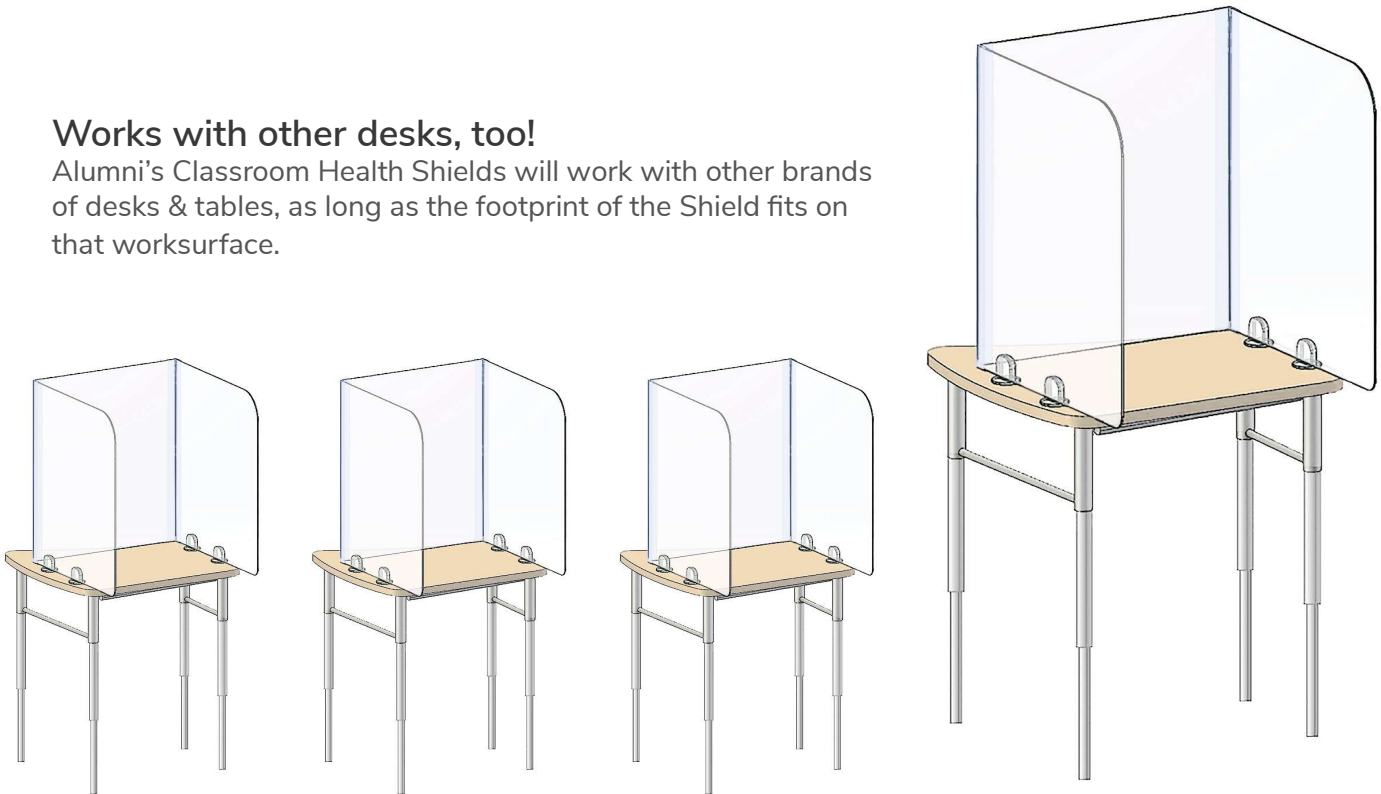
Attending school in its familiar form is important for many reasons but it cannot put student and educator lives at risk. **The classroom is a familiar place and psychologically directly associated with the learning process.** The value of having eye contact, asking questions and being guided back on track in the moment is the most interactive way to gain progress in learning for a student.

Also, **being taught by a qualified educator** is proven to be the most effective learning method in the K-12 environment. Human interaction puts checks and balances in place to gauge the level of progress for each student. Without that validation, students can be left behind or even choose to not participate in the learning process.

Alumni Classroom Health Shields

Works with other desks, too!

Alumni's Classroom Health Shields will work with other brands of desks & tables, as long as the footprint of the Shield fits on that worksurface.



SHIELD-FLOW-2022-CLEAR
22"W x 20"L x 24"H

SHIELD-RECT-2020-CLEAR
20"W x 20"L x 24"H

SHIELD-BOOM-HEX-201220-CLEAR
12"W x 20"L x 24"H

SHIELD-BOOM-HEX-201220-CLEAR
2"W x 20"L x 24"H



Flow Desk



18x24" Desk



Hex Desk



Boomerang Desk

Alumni Classroom Health Shields designed to work with these popular Alumni Desks

The Alumni engineers considered many factors when designing The Alumni Classroom Health Shield. Made of **sturdy clear acrylic plexiglass**, the shield maintains a physical barrier while allowing visual interaction - no need to lean over or around the barrier to see and be seen, to hear and be heard.

The objective is to contain the student and the throw of their breath without limiting their ability to communicate, allowing social interaction with other students.

A solid, non-transparent barrier can create social isolation and anxiety, leading to breaching the barrier simply to make eye contact.

Social interaction is required for students to remain positive and focused. The ability to see and hear their peers in a shielded classroom can help lower anxiety and promote peace of mind for everyone entering this new classroom environment, students and teachers, alike.



How the Shield Works ... Dual Layers of Protection

The Classroom Health Shield attaches to the student desk and provides a layer of protection between students.

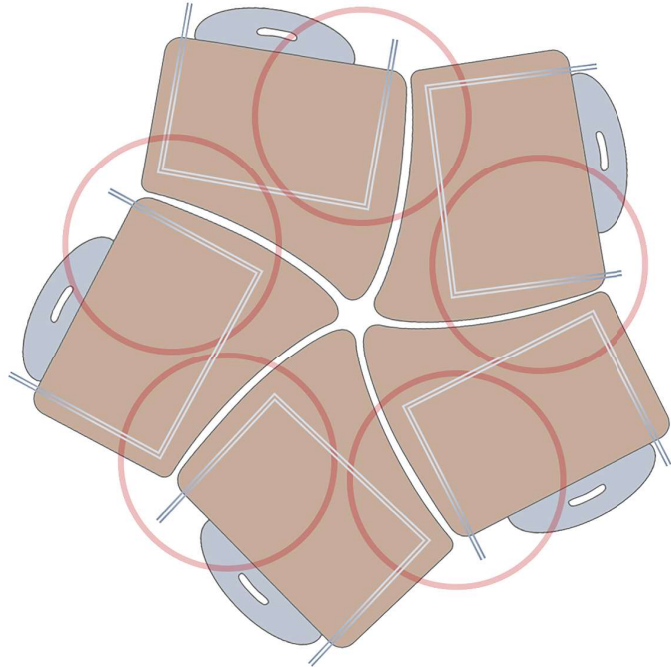
Actually, **dual layers of protection**, because each student has their own shield on their own desk, protecting the student in three directions:

Left, Right & Center.

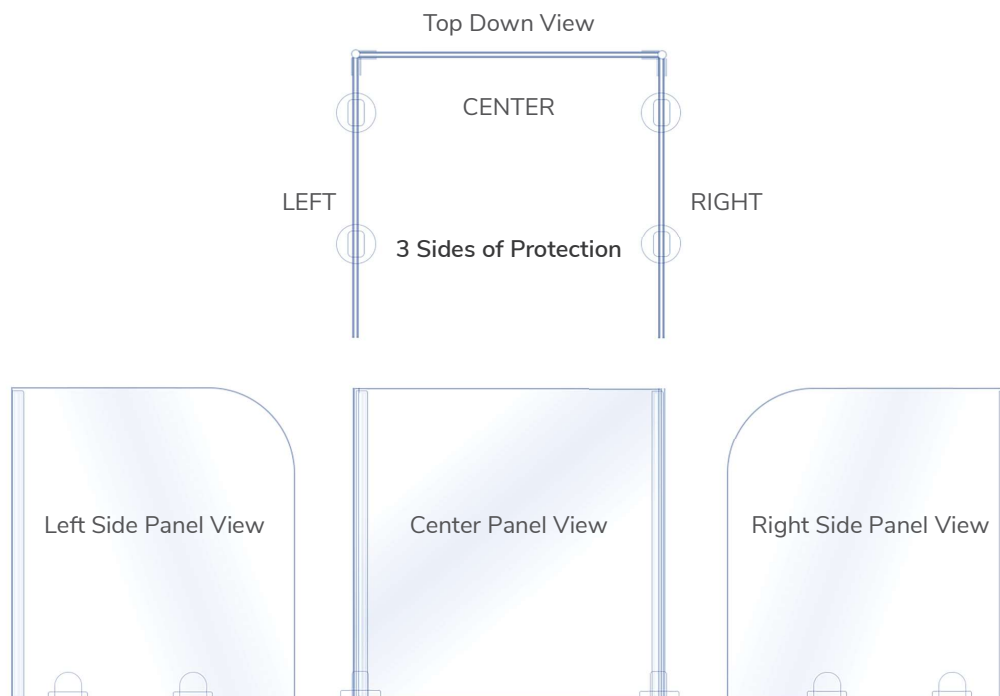
And the student across from you and the student beside you each have the same shield - two layers of protection: Left, Right & Center.

By design, the side panels of the shield extend past the rear edge of the desk, providing even further protection.

So students can experience all the benefits of a small collaborative group, with extra added health protection ... dual layers of shielded protection.



*In this scenario, each center panel is facing the left panel of the shield assembly on the desk to the right ... **dual layers of protection** for both students behind those shields.*



Alumni Classroom Health Shields

Clear Acrylic Plexiglass on all three sides

Allows social interaction
with others

Panels are 24" high

An extra measure of protection.

Full length hinges are safe & sturdy

The plexiglass panels are
glued to the hinges to prevent
the panels from separating.

Attaching the Shield to the Desk

The exclusive Alumni
Mounting Puck features a
secure - yet releasable –
adhesive. The shield can
easily be removed from the
desk surface when no longer
required for everyday use.

Compact Storage

When removed from the
desktop, the hinges allow the
Shield to fold for storage
and transport.

Round safety corners on all touchpoints

Smooth edges are safe to be
around.





Applying another level of assurance

“Our Best Effort to protecting our Students”



Alumni's **Flow Student Desks** create a pentagon-shaped table for 5, and by placing **Classroom Health Shields** on each desk, students are provided double protection, a “must have” in close quarters.



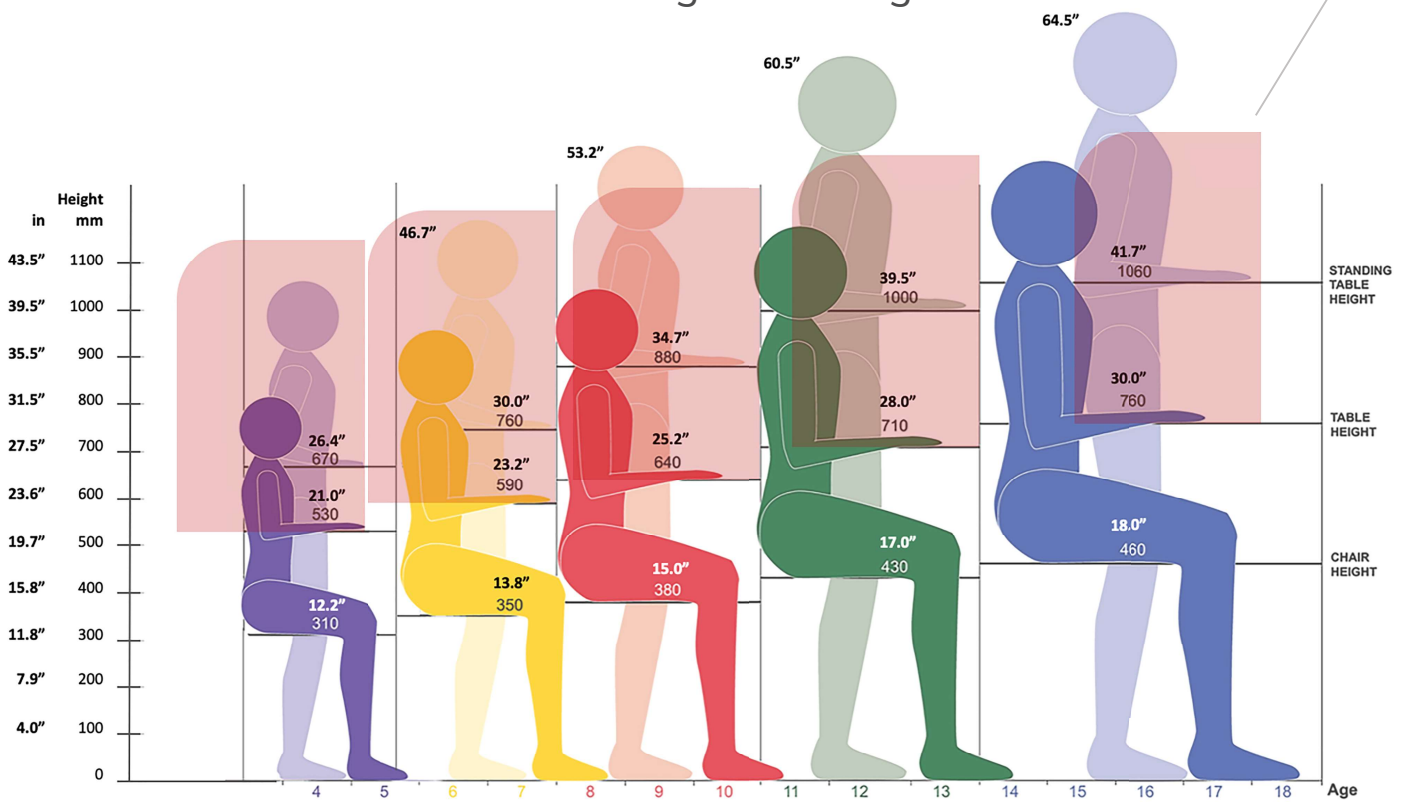
Popular 18" x 24" Student Desks can be arranged in a variety of ways, included a pod of 4, with 4 square feet of separation in the center. Adding **Classroom Health Shields** to each desk surrounds the student with protection on three sides.

Size Relationship of Students

Using a 24"H Classroom Health Shield

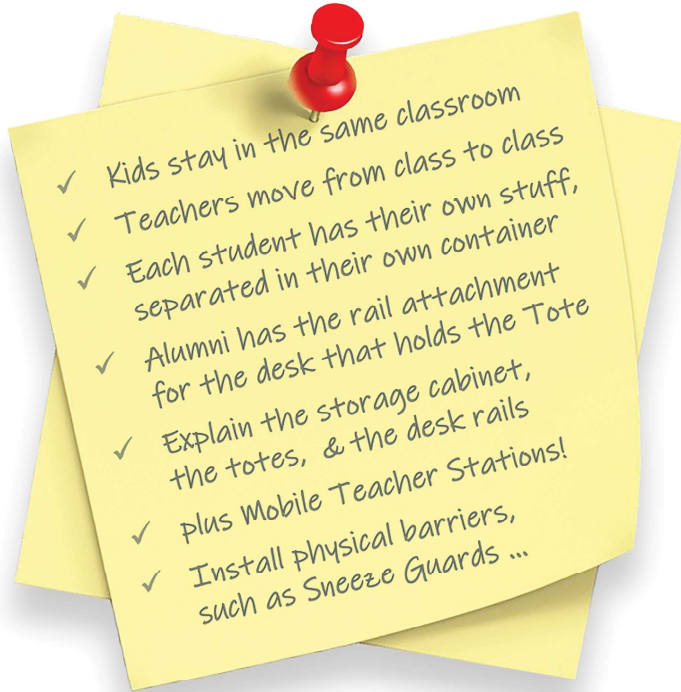
24" High Shields set at
Recommended Student Standing Table Height

24" High Shield





Alumni Classroom Health Shields



CDC Guidelines for Schools

Coronavirus | COVID -19

“Keep classes together to include the same group of students each day.”

Install physical barriers, such as sneeze guards & partitions, particularly in areas where it is difficult for individuals to remain at least 6 feet apart.”

“Minimal mixing between groups.”

“Keep each student’s belongings separated and in individually labeled storage containers.”

“Ensure adequate supplies to minimize sharing of high touch materials like art supplies & electronics ...”

“... disinfect between use”





cdc.gov

Centers for Disease Control and Prevention
CDC 24/7. Saving Lives. Protecting People™

Search Coronavirus

Advanced Search

Coronavirus Disease 2019 (COVID-19)

CDC > Coronavirus Disease 2019 (COVID-19) > Communities, Schools & Workplaces > Schools & Child Care

Coronavirus Disease 2019 (COVID-19)

Symptoms

Testing +

Prevent Getting Sick +

If You Are Sick +

Daily Life & Coping +

People Who Need Extra Precautions +

Pets & Other Animals +

Travel +

Frequently Asked Questions

Cases, Data, & Surveillance +

Communities, Schools & Workplaces

Cleaning & Disinfecting +

Worker Safety & Support +

Schools & Child Care -

Considerations for Schools

Other Languages Print Page

Updated May 19, 2020

As some communities in the United States open K-12 schools, CDC offers the following considerations for ways in which schools can help protect students, teachers, administrators, and staff and slow the spread of COVID-19. Schools can determine, in collaboration with [state and local health officials](#) to the extent possible, whether and how to implement these considerations while adjusting to meet the unique needs and circumstances of the local community. Implementation should be guided by what is feasible, practical, acceptable, and tailored to the needs of each community. School-based health facilities may refer to CDC's [Guidance for U.S. Healthcare Facilities](#) and may find it helpful to reference the [Ten Ways Healthcare Systems Can Operate Effectively During the COVID-19 Pandemic](#). These considerations are meant to supplement—**not replace**—any state, local, territorial, or tribal health and safety laws, rules, and regulations with which schools must comply.

Guiding Principles to Keep in Mind

The more people a student or staff member interacts with, and the longer that interaction, the higher the risk of COVID-19 spread. The risk of COVID-19 spread increases in school settings as follows:

- **Lowest Risk:** Students and teachers engage in virtual-only classes, activities, and events.
- **More Risk:** Small, in-person classes, activities, and events. Groups of students stay together and with the same teacher throughout/across school days and groups do not mix. Students remain at least 6 feet apart and do not share objects (e.g., hybrid virtual and in-person class structure, contactless food/drink distribution, common data collection devices).

On This Page

- Guiding Principles
- Reduce Spread
- Healthy Environments
- Healthy Operations
- When Someone Gets Sick
- Other Resources

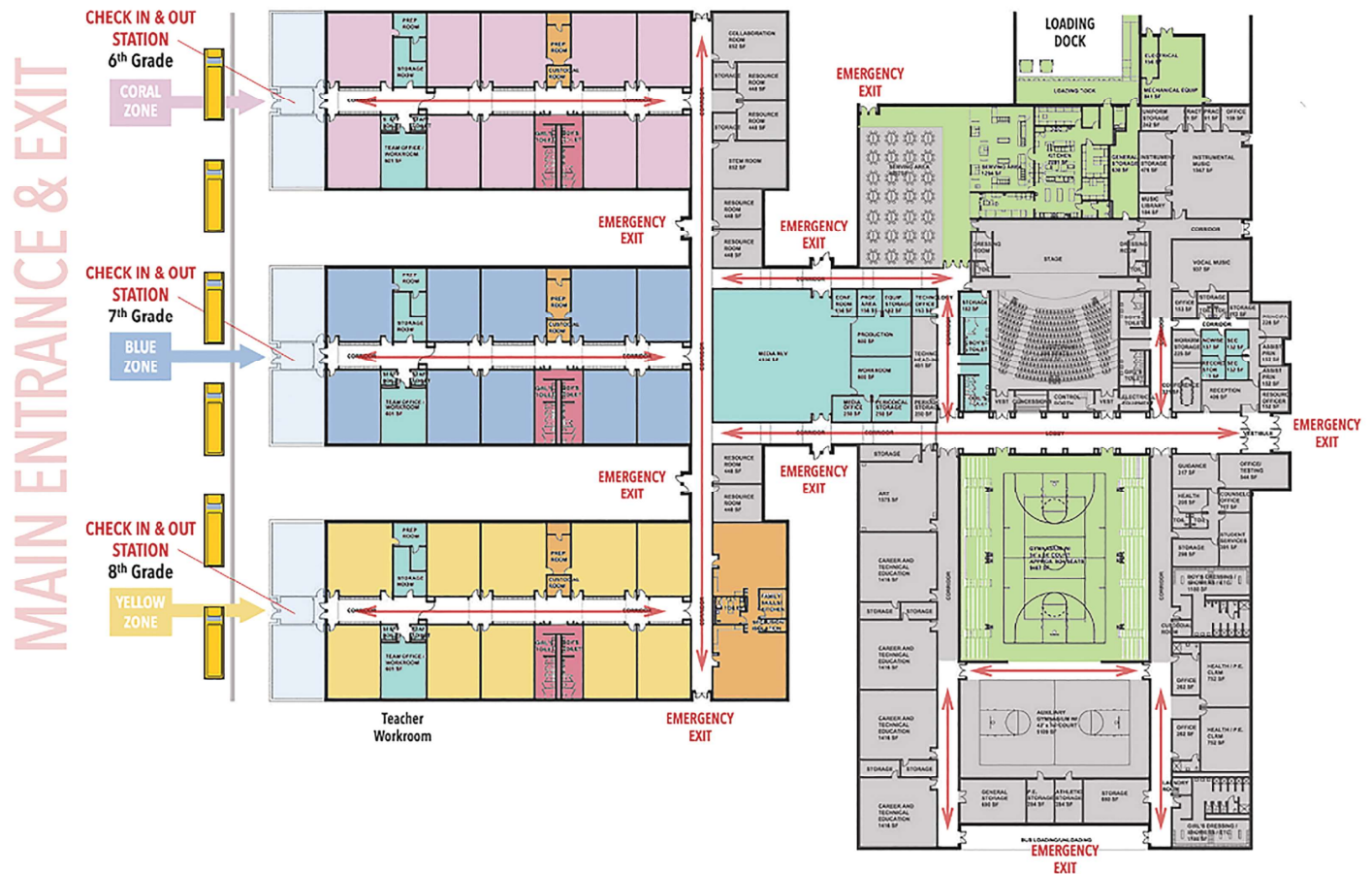
• Physical Barriers and Guides

- Install physical barriers, such as sneeze guards and partitions, particularly in areas where it is difficult for individuals to remain at least 6 feet apart (e.g., reception desks).
- Provide physical guides, such as tape on floors or sidewalks and signs on walls, to ensure that staff and children remain at least 6 feet apart in lines and at other times (e.g. guides for creating “one way routes” in hallways).



Going Back to School ...

What does that look like?



Some suggested processes for a controlled Re-Opening of a School:

- “Zone” approach to organizing the school
- Predictable traffic patterns by restricting Students | Teachers to their Zone
- Teachers move from class to class, students stay in the same classroom
- All required materials stay in the classroom
- Social Distancing Dots in Moving and Stationary Lines
- Masks worn until seated at a desk
- Temperature checks before allowing entry
- Automatic Hand Sanitizer at School entry points and Classroom entry Points
- Staggered start times & finish times

Possible Phase 1 Scenario



Check-In & Out Stations
Temperature, attendance

ACCESS: Entry & Exit Only Through Your Zone

Entrances at the end of each of the grade level wing are now the main entrances. Buses drop off and pick up at these entrances. Students & staff & visitors checked in and out here. Temperatures recorded. Attendance recorded.



6th Grade Wing

CORAL ZONE

All 6th grade students enter & exit through the Pink Entrance.
All administration staff & teachers check in & out through this entrance as well.



7th Grade Wing

BLUE ZONE

All 7th grade students enter and exit through the Blue Entrance.
All Kitchen & Custodial personnel check in & out through this entrance as well.



8th Grade Wing

YELLOW ZONE

All 8th grade students enter and exit through the Yellow Entrance.
All Visitors check in & out through this entrance as well. All visitors must contact the School Office & preregister prior to their appointment.



Administration Areas
Teacher Workrooms

Close Multi-Use Areas

The Media Center serves as Admin Staff offices. Closer to the Classroom Wings. Offices & spaces assigned. Dedicated Staff Restrooms in the hallway behind the Media Center. Teachers in each Grade Wing have Staff Restrooms & Workrooms.



Custodial Areas

Constant Cleaning

The Custodial Staff in former Family Services Room across the hall from 8th Grade Wing. Close to the Classroom Wings & wing-specific rooms for cleaning equipment & supplies. This area has its own restroom and a small kitchen. Extra staff hired.



Student Restrooms

Zones Created Around Restrooms

Each Grade Wing has its own set of Restrooms for Boys & Girls. Staggered trips to the restrooms. Never more than 10 students in the restroom at one time. Restrooms must be cleaned every hour that the school is open, until further notice.



Kitchen Area & Gym

Lunch & Snacks in Classroom | Staggered Visits to the Gym

The Kitchen to prepare all food. No in-room snacks. Breakfast & Lunch to be wheeled to the classes. The Gym will be open for class activities on a scheduled basis. Exercise design by the Phys Ed Instructor. Outdoor exercise if possible.



Unavailable Areas
During Phase 1 Return

Zero Access Outside of Your Zone

Only Entrances for Students, Staff & Visitors are through the Grade Wings Entrances, until further notice. All other outside doors are now Emergency Exits. So Hallways will remain open to those Emergency Exits. All areas grayed out on the attached map are now closed and unavailable for use. The Custodial Staff will be concentrating on cleaning and sterilizing and they will not be able to maintain all of those other parts of the school.



Going Back to School ...

What does that look like?

Increase protective measures by decreasing Student | Teacher traffic

In this scenario ...

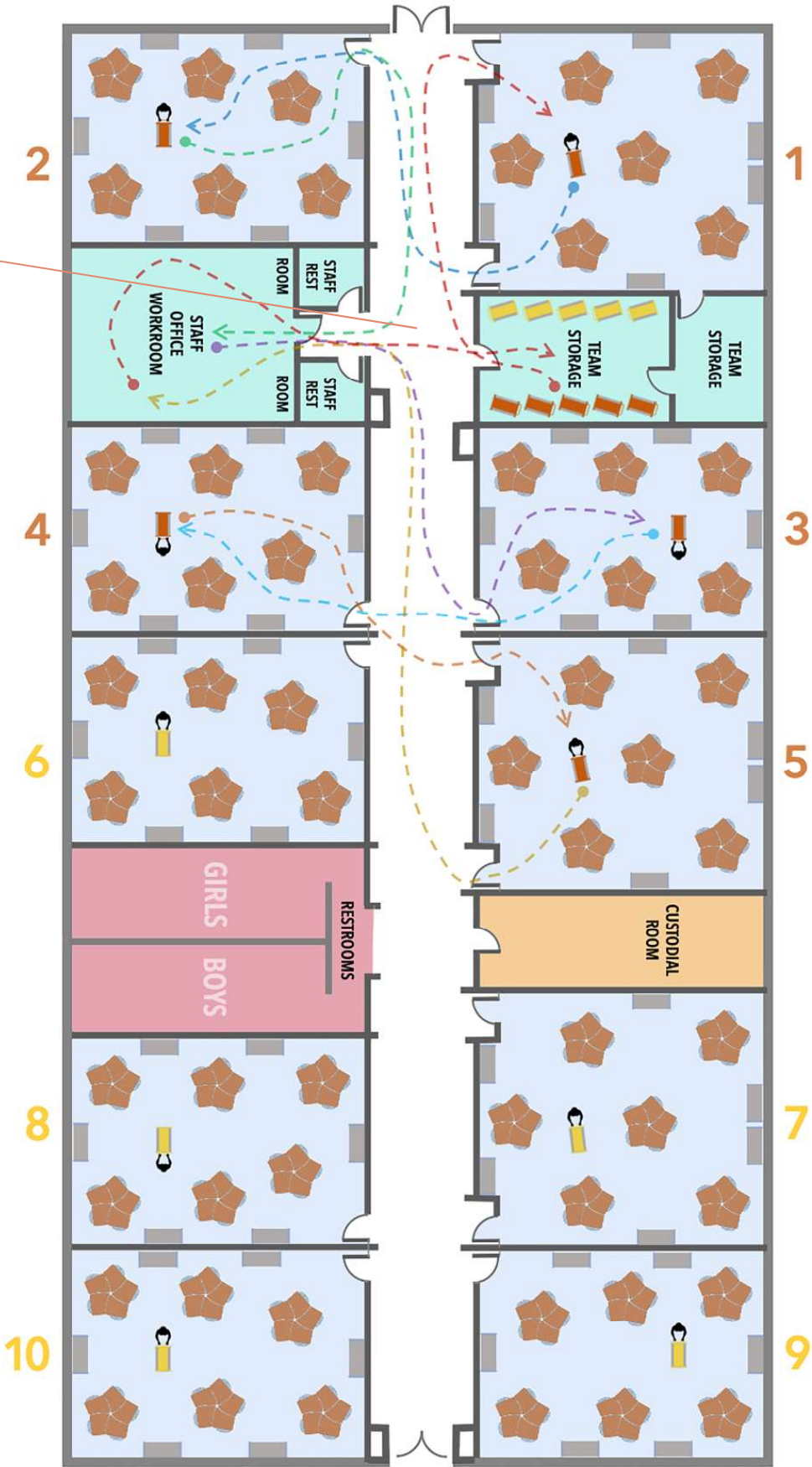
- Each classroom features **30 Flow Desks** in 6 groups of 5
- Each classroom features 6 each **AALC centers**, one for each Flow Group
- Each desk has a **Classroom Health Shield**, which is how that many students can be in that space
- There are **two teams of 5 teachers** who each have 5 classes to work with during the day
- **Orange Team** serves Rooms 1 thru 5
- **Yellow Team** serves Room 6 thru 10
- **Teachers move from class to class**, students stay in the same classroom
- The arrows show **one teacher's pathway** from class to class, and in and out of the Staff Office Workroom.
- The **Mobile Teacher Stations** are parked in the Team Storage Room across the hall from the Staff Workroom



Mobile Teacher Station

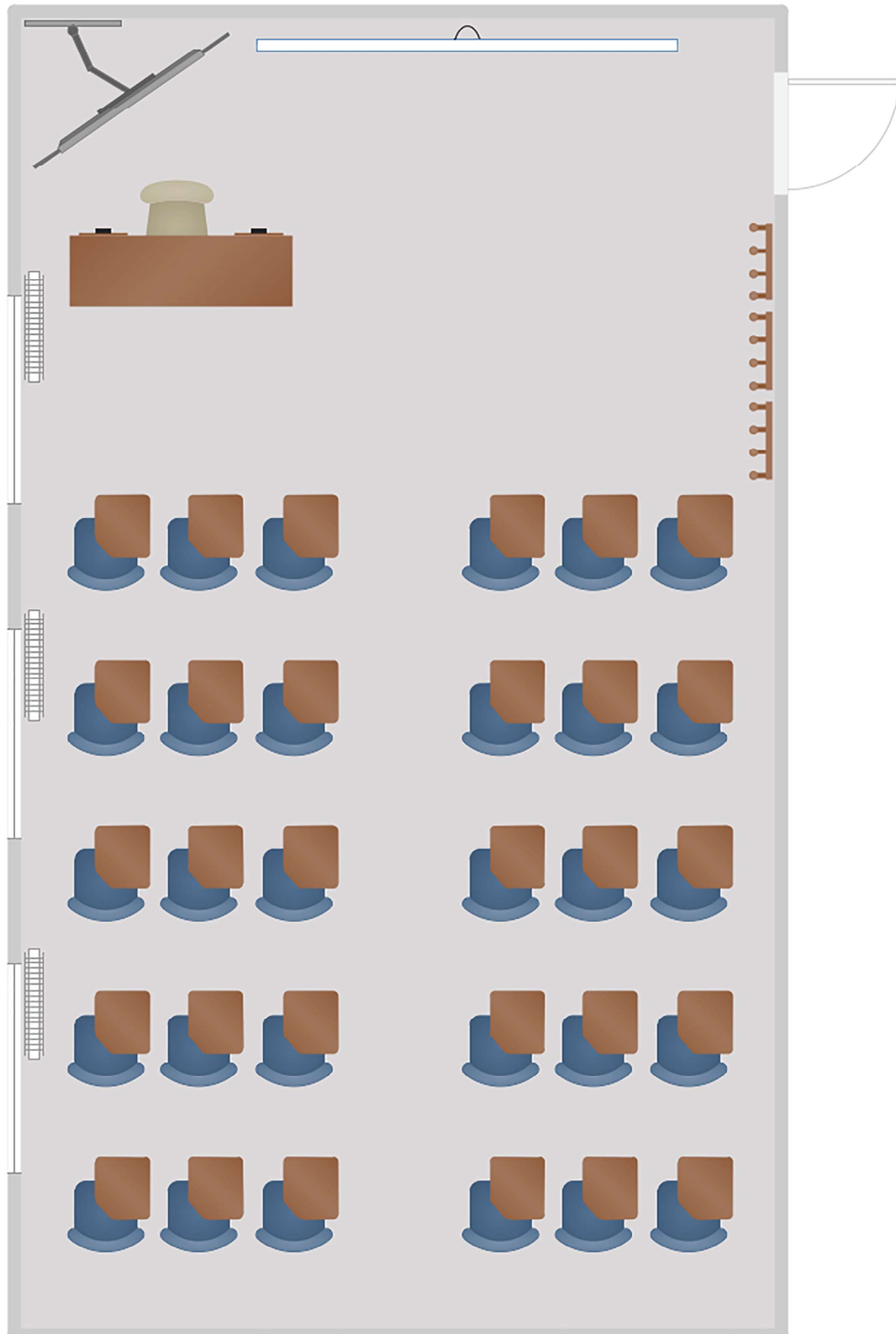
Closeup of the BLUE ZONE the 7th Grade Wing

Arrows show one Orange Teacher's pathway to and from the 5 Orange classrooms, starting and ending in the Team Storage Room, where the Mobile Cart is stocked & parked.



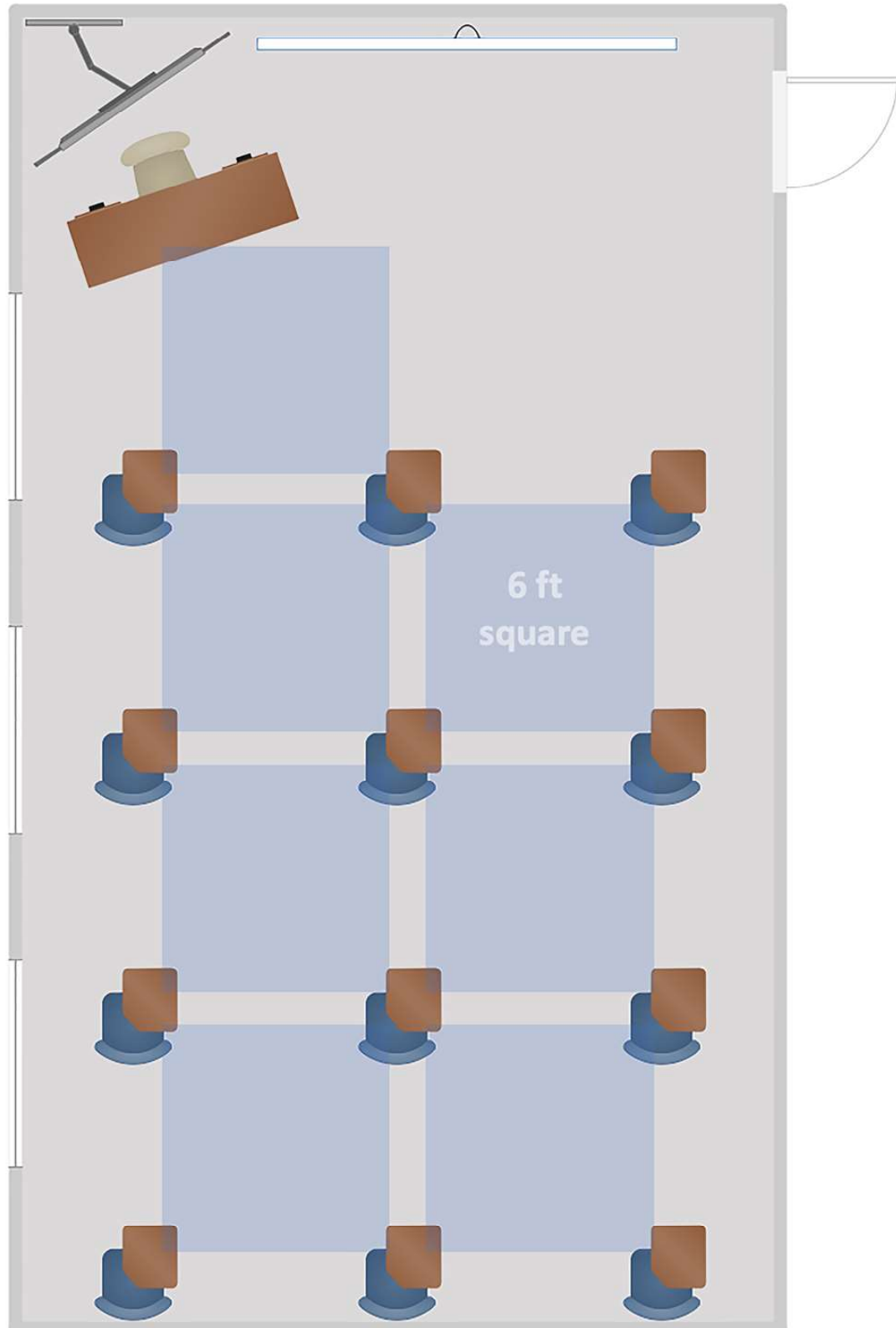


Traditional Classroom with 30 chair desks in a row

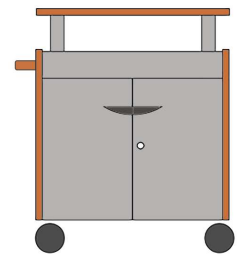
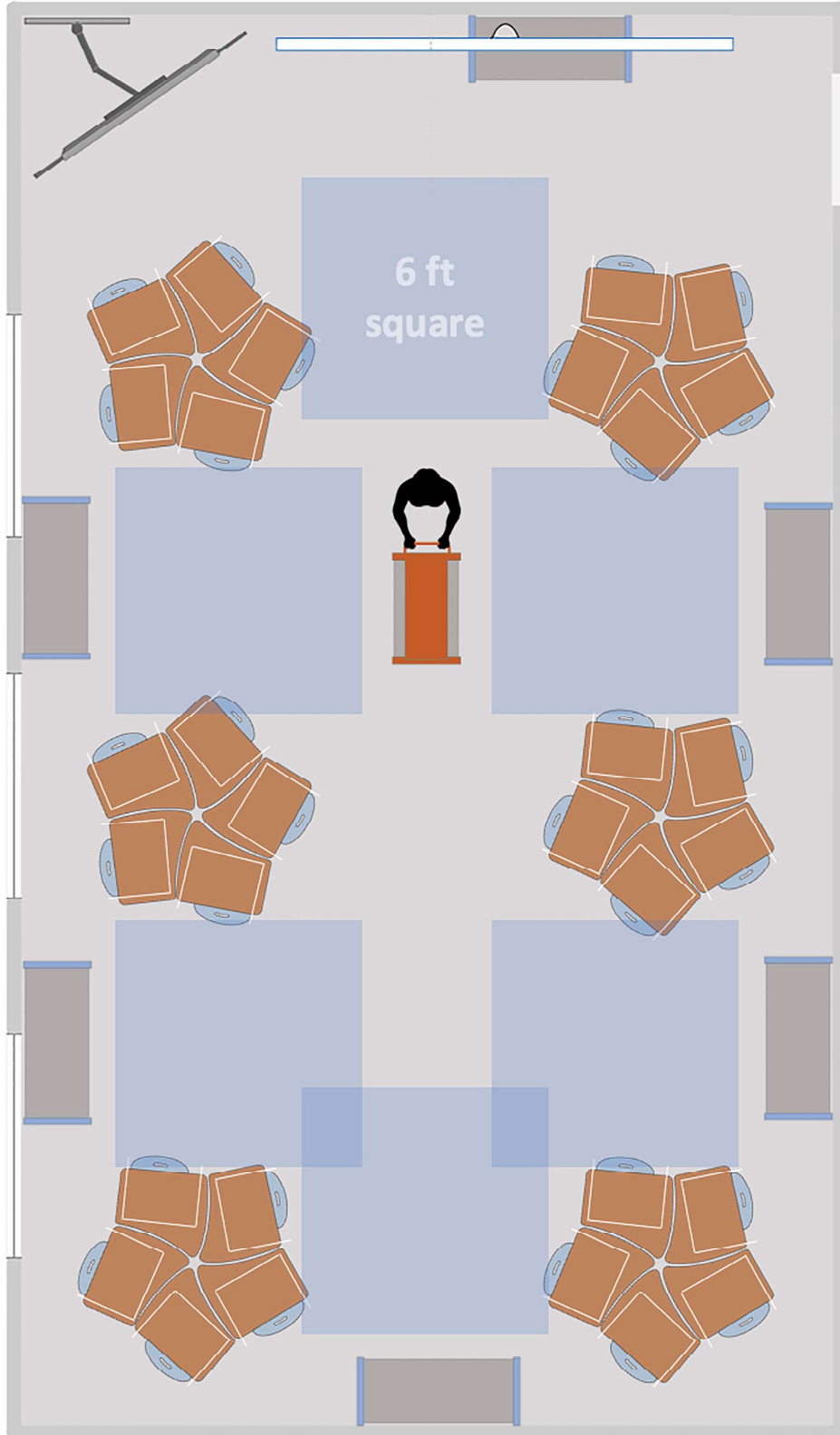


Approximate 700 square feet classroom

Traditional Classroom with 12 chair desks in a row



Flow Collaborative Groups with Classroom Health Shields



Mobile Teacher Station

29 x 19 x 37H

With or without doors

With Riser Shelf

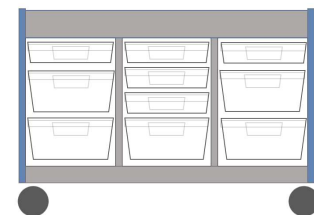
With push handle

6 each 3"D tote trays

2 each 6"D tote trays



Teachers move from classroom to classroom. Students stay in the same classroom



Accelerator Storage Center

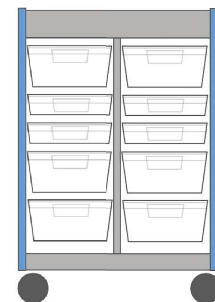
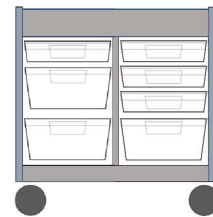
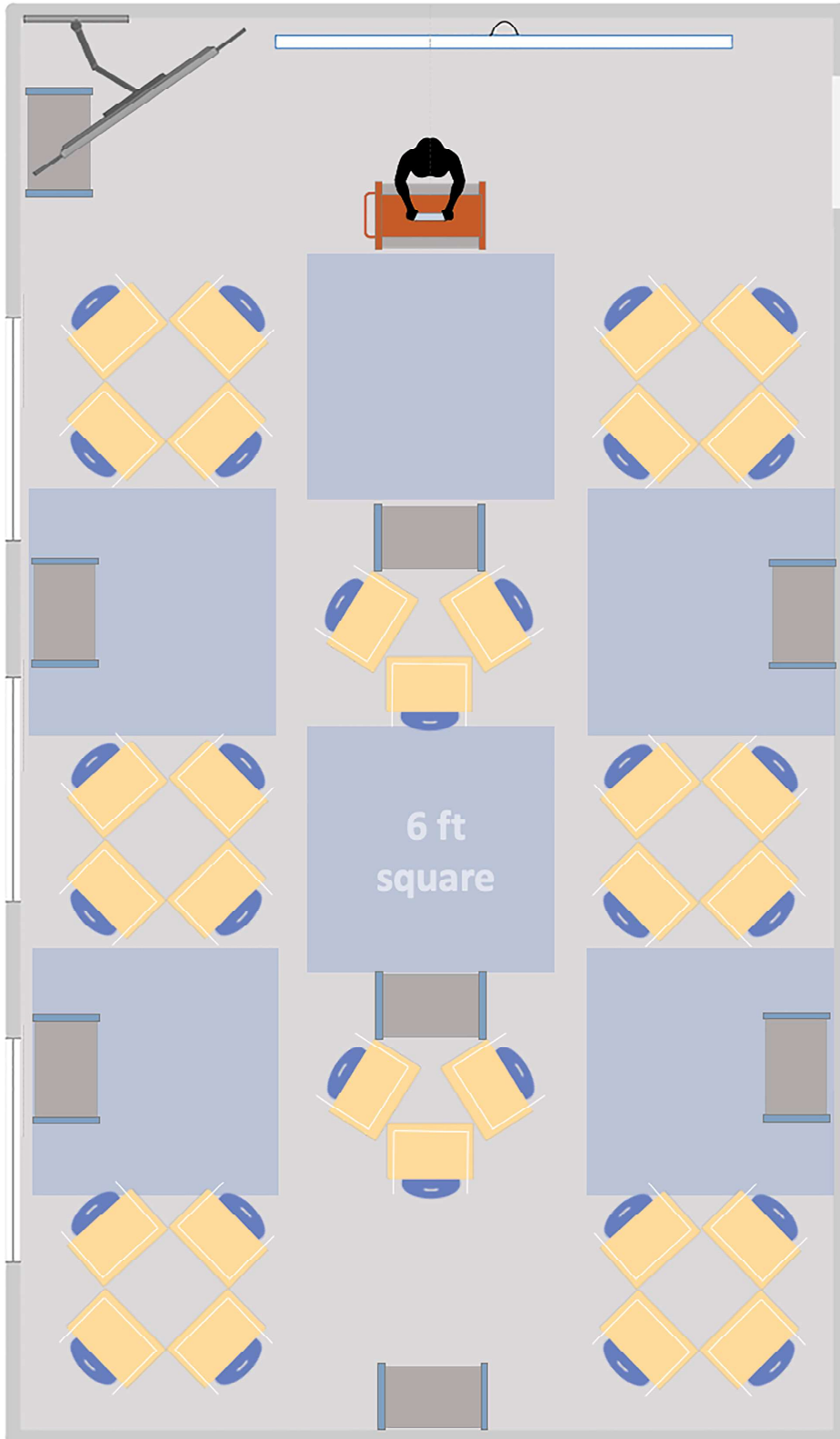
43x19x30H

Each Flow Desk Cluster has its own AALC Storage Cabinet. Each student has two totes assigned to them: One 3"D Tote which can be removed from the cabinet and placed underneath the student's desk worksurface for easy access. The 6"D Tote stays in the cabinet that student's materials, so each Tote is labeled with the student's name.

5 each 3"D tote trays

5 each 6"D tote trays

Traditional 18x24" Desk Groupings with Classroom Health Shields



Accelerator Storage Centers ... 2 versions

For 4 students 29 x 19 x 43H

4 each 3"D tote trays

6 each 6"D tote trays (2 extra)

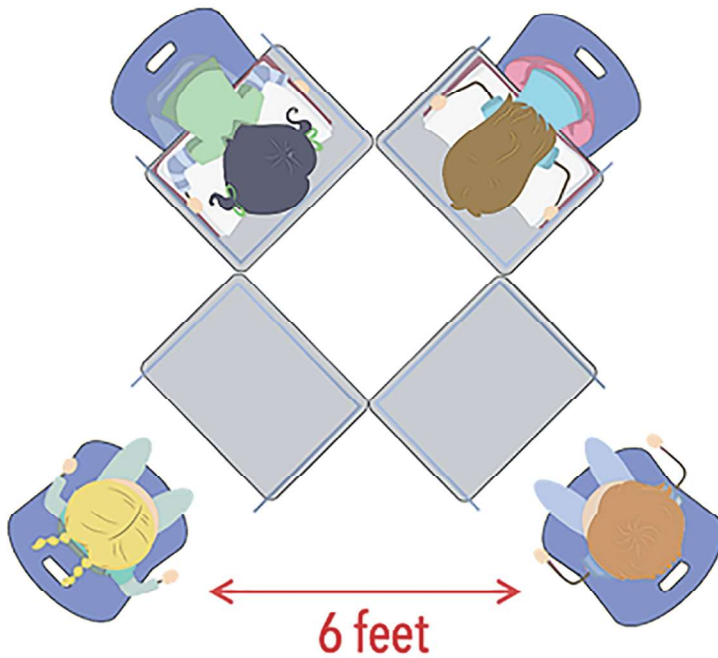
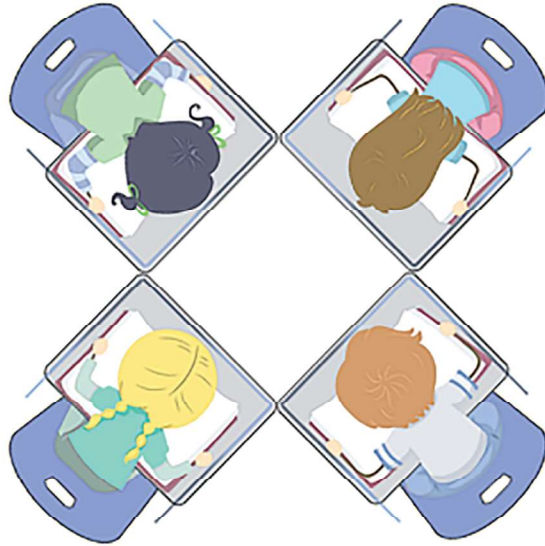
For 3 students 29 x 19 x 30H

4 each 3"D tote trays (1 extra) 3 each 6"D tote trays

Each 18x24 Desk Cluster has its own AALC Storage Cabinet. Each student has two totes assigned to them: One 3"D Tote which can be removed from the cabinet and placed underneath the student's desk worksurface for easy access. The 6"D Tote stays in the cabinet that student's materials, so each Tote is labeled with the student's name.



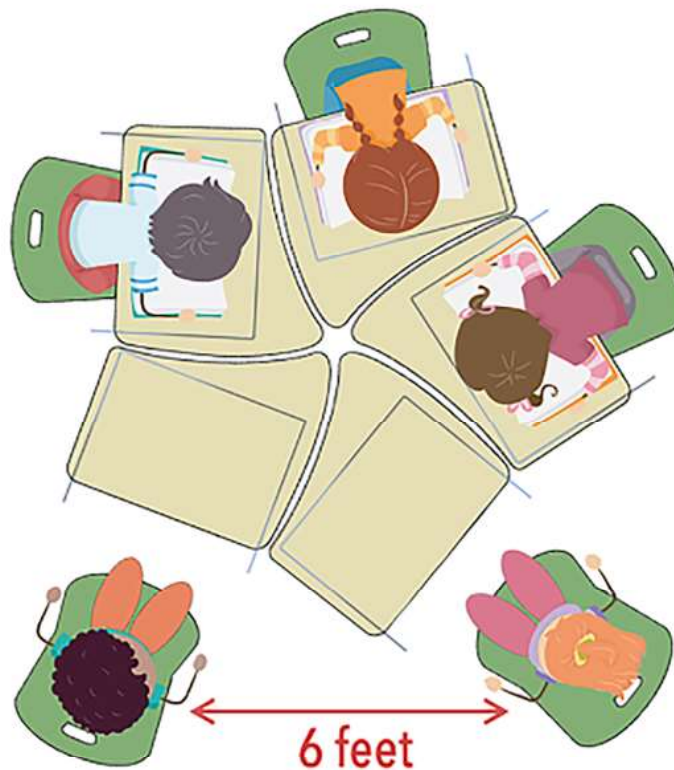
Push back chair positions could achieve 6 feet of distance



Why is social interaction important for the class?

“Social interaction is important in the classroom because **students** get to communicate with each other ... Teachers must become lifelong learners who continue to develop and hone their craft by observing students, working with other teachers, and reflecting on their own teaching.”

The Impact of Social Interaction on Student Learning - ScholarWorks scholarworks.wmich.edu





Alumni Classroom Health Shields



The objective is to keep students safe while allowing social interaction.

The Alumni Classroom Health Shield (the 'Shield') is intended to function as a close proximity barrier to be used on a desktop where social distancing or other preventive measures intended to reduce possible exposure to the COVID-19 virus are not possible or practicable. The Shield, together with other measures, may assist in reducing droplet exposure for the user and others in close proximity to the user. It is not a complete exposure solution and will not prevent illness caused by or associated with COVID-19. The Shield is intended to be used in combination with other preventive measures. Alumni does not guarantee the performance of the Shield and there is no assurance as to its effectiveness. All representations, warranties and conditions of any kind relating to the Shield, whether express or implied, are excluded and disclaimed to the maximum extent permitted by applicable law. Neither Alumni nor any of its affiliates will be liable for any damages or losses of any kind whatsoever, whether or not foreseeable, in any way relating to the use of the Shield.

1 Year Warranty & Limitation of Liability LIMITED WARRANTY. ALUMNI Classroom Furniture Inc. ("ALUMNI") warrants all panels of its Classroom Health Shield to be free from defects in materials and workmanship under normal use, service, and handling for a one(1) year period as defined below from the date of purchase. One(1) Year Limited Warranty is considered to be held with the original purchaser only and is validated with a proof of purchase. Mounting Adhesives are considered to be a one-time use products and are replaceable at an additional cost.

These warranties will not include damages as a result of abuse, misuse, vandalism, unauthorized repairs or modifications, defacement, inadequate inspection or maintenance, neglect, accident, improper application, prolonged exposure to extreme temperature or improper use. Neither the receipt of information from Buyer nor delivery by Seller of the Products shall in any manner imply a warranty on the part of Seller that the Products will be suitable for the purposes disclosed by Buyer nor any other obligation or liability on the part of Seller respecting the suitability of the Products. ALUMNI at its sole discretion and subject to a pro-ration of use as determined by ALUMNI will repair or replace the product, or provide the customer a credit for the value of the product subject to the warranty within a reasonable time following the receipt by ALUMNI of such notice of defect.

There are no warranties which extend beyond the description above, and ALUMNI makes no other warranties, expressed or implied, regarding its products, their fitness for any particular purpose, their merchantability, or otherwise. ALUMNI does not make and hereby expressly disclaims any other representation, affirmation, promise, description, sample or warranty of any kind with respect to the product.

The sole remedy against ALUMNI, and ALUMNI's sole liability under this warranty shall be limited to the repair or replacement of the product, in ALUMNI's sole discretion. In no event shall ALUMNI be liable for the cost of procurement of substitute goods by the consumer, or any special, consequential or incidental damages for the breach of warranty even if ALUMNI has been apprised as to the likelihood of such damages occurring. In no such event shall ALUMNI's liability (whether based on an action or claim in contract, tort, or otherwise) to the customer or any part arising out of or relating to its products or the order or delivery of its products to exceed the purchase price charged by ALUMNI for such products.

These limitations and exclusions will apply regardless of the form of action, including misrepresentation, negligence or gross negligence.

www.alumnicef.com

1-833-939-9300

customerexperience@alumnicef.com