

FABRICATION INFORMATION BOOK



PH: 1.844.JWD.1884



www.jwdanforth.com



FABRICATION OVERVIEW



Danforth has the expertise and the resources to perform fabrication services for your project needs. Our Shops across New York State allow us to coordinate and complete project milestones efficiently within your allotted time frame.

Pipe Fabrication

- Shops in Buffalo, Rochester and Albany with nearly 100,000 sq. ft. of space
- Fabrication of Hangers, Process Piping, Plumbing Systems, HVAC, Mission Critical Systems
- Carbon Steel, Specialty Steel, Copper, Fiberglass, Plastics
- Vernon 5 Axis Plasma Cutter
- Rotoweld 3.0 Weld Cell



Sheet Metal Fabrication

- Shops in Buffalo and Albany with over 75,000 sq. ft. of space
- Fabrication of an assortment of metals that meet SMACNA Standards
- Coil Machine – Square and Rectangular Duct
- Spiral Machine – Round and Oval Duct
- Cutting, Forming and Roll Forming



High Purity and Stainless Steel Fabrication

- 4,000 sq. ft. of ISO Class 6 Cleanroom Fabrication
- 11,000 sq. ft. Stainless Steel Fabrication
- Ultra-High Purity Welding and IR Fusion Welding
- Bagged and Protected Materials



BUFFALO FABRICATION SHOPS - Equipment Highlights



Carbon Steel Fabrication Shop = 20,000 sq. ft.

300 Colvin Woods Parkway – Tonawanda, NY

- (2) 18" Vertical Band Saws
- Chop Saw
- Iron Worker 80 Ton
- Vernon 5 Axis CNC Cutter 3" to 48"
- Hydraulic Pipe Beveler 3" to 16"
- (3) Roll Grooving Machine 24" & Down
- Cut Grooving Machine 24" & Down
- (2) Thread Machines capable of 4" Pipe and Down
- (7) MIG Portable Welders
- (14) Weld Positioners
- (7) Miller Pipe Worx MIG Weld Machines
- Miller Submerged Arc Weld Machine
- Rotoweld 3.0 Automated Pipe Welding Cell (2 work station capacity) 6" to 42"
- (4) Fork Trucks
- (8) Interior JIB Cranes 1 Ton
- (2) Interior 1 Ton Bridge Cranes
- (2) Interior 5 Ton Bridge Cranes
- Exterior 5 Ton Bridge Crane



Sheet Metal Fabrication Shop = 42,000 Sq. Ft.

400 Colvin Woods Parkway – Tonawanda, NY

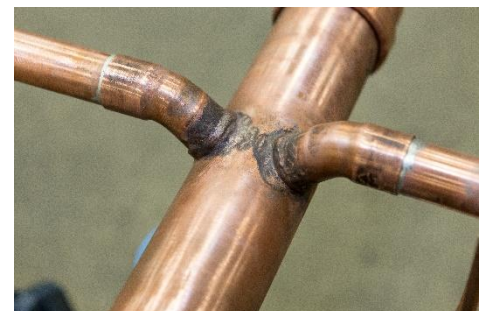
- (3) Plasma CNC Cut Tables to cut 26 gauge to 2" thick
- (2) 200 Ton Press Break
- Rollers 6" Dia. & Up
- 8"-42" Round Ductwork Seam Welder
- Various formers, edgers, breaks, as required for ductwork fabrication
- Spiral machine – Round Ductwork 4" to 36"
- Gorelock Machines – Round Fittings 4" to 36"
- Coil Machine
- Industrial Paint Booth
- (2) Iron Worker 65
- (6) MIG Welders
- (2) Fork Trucks
- (2) 7.5 Ton Bridge Crane
- 6,000 Sq. Ft. Shop used for specialty duct– high quality Exterior Pre – Insulated & Cladded Duct System for high efficiency air distribution



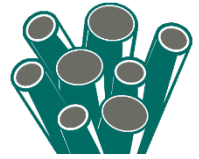
Copper & Plumbing Shop = 23,000 sq. ft.

500 Fillmore Ave. – Tonawanda, NY

- Chop Saw with Tiger Stop Automated Technology
- Cast Iron Chain Snapper
- T-Drill
- Hydraulic Lift Table
- (2) MIG Welders
- Hydraulic Unistrut Cutter
- (2) Fork Trucks



ROCHESTER FABRICATION SHOPS - Equipment Highlights



Carbon Steel Fabrication Shop = 14,000 sq. ft.

930 Old Dutch Rd. – Victor, NY

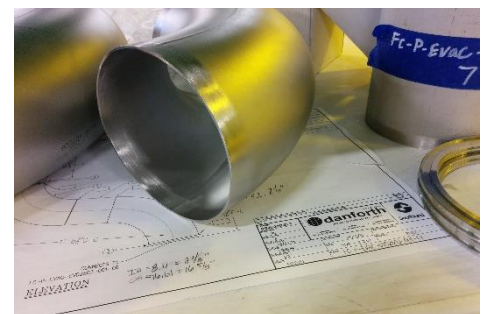
- 18" Vertical Band Saw
- Iron Worker 50 Ton
- Watts Plasma 3" to 32"
- Roll Grooving Machine 24" & Down
- Thread Machines capable of 4" Pipe and Down
- (4) MIG Portable Welders
- (5) Weld Positioners
- (7) Miller Pipe Worx MIG Weld Machines
- Miller Submerged Arc Weld Machine
- Miller Induction Machine - Post Weld Heat Treatment Equipment
- (2) Fork Trucks
- (8) Interior JIB Cranes
- (2) Interior 5 Ton Bridge Cranes



Stainless Steel Fabrication Shop = 15,000 sq. ft.

930 Old Dutch Rd. – Victor, NY

- 6" & Down George Fisher Saw
- 8"-12" George Fisher Saw
- 6" & Down Servermaster Cutter & Facing Tool
- Watts Plasma 3" to 32"
- (5) MIG Portable Welders
- (5) Weld Positioners
- (2) Tip TIG Weld Machine
- Stainless Steel Thread Machine 1/4" to 4" pipe
- Fork Trucks
- 1 Gantry Crane 2 Ton
- Rems Automatic Tube Cutter 1/4" to 4" Tubing
- Swagelok Bench Mounted Tube Bender
- Tri-Tool Facing Tool 1/4" to 6" Tubing
- (2) AMI Orbital Weld Machines 1/4" to 6" Tubing
- (2) Asahi Plastic Fusion Machines 1/2" to 6" Pipe
- 99.999 Bulk Argon Storage System

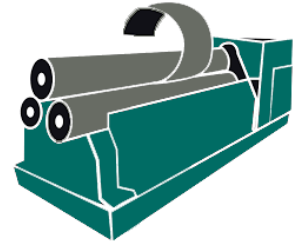


ALBANY FABRICATION SHOPS - Equipment Highlights

Carbon Steel Fabrication Shop = 10,000 sq. ft.

5 Liebich Lane – Clifton Park, NY

- 18" Vertical Band Saw
- Chop Saw
- Watts Plasma 3" to 32"
- (2) Roll Grooving Machine 24" & Down
- Thread Machines capable of 4" Pipe and Down
- (4) MIG Portable Welders
- (7) Weld Positioners
- (5) Miller Pipe Worx MIG Weld Machines
- (2) Fork Trucks
- (3) Interior JIB Cranes 1 Ton
- Interior 5 Ton Bridge Cranes
- 55 Ton Iron Worker



Sheet Metal Fabrication Shop = 42,000 sq. ft.

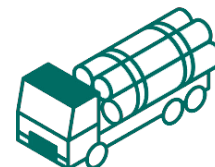
5 Liebich Lane – Clifton Park, NY

- Plasma CNC Cut Table 26 gauge to 3/4" thick
- 200 Ton Press Break / Roto Die Press Break
- Rollers 6" Dia. And Up
- 6" to 52" Round Ductwork Seam Welder
- Various formers, edgers, breaks, as required for ductwork fabrication
- Spiral machine – Round Ductwork 4" to 68"
- Gorelock Machines – Round Fittings
- Coil Machine 6 Stations
- Iron Worker 40 Ton
- (6) MIG Welders/ (2) Tig Welders
- (2) Fork Trucks
- Interior 2 Ton Bridge Crane



PROJECT OPERATIONS LOGISTICS

Fleet of 38 Vehicles to Support our Shop and Project Operations



- | | |
|---------------------|-----------|
| Stake Trucks | ○ (6) 26' |
| | ○ (2) 24' |
| | ○ (1) 20' |
| | ○ (3) 16' |
| | ○ (2) 14' |

- | | |
|-------------------|-----------|
| Box Trucks | ○ (2) 17' |
| | ○ (1) 18' |
| | ○ (1) 15' |
| | ○ (1) 12' |
| | ○ (3) 24' |
| | ○ (1) 26' |

Other Vehicles

- (60) Pick Up Trucks
- (3) 26' Pull Behind Trailers

Near or far, we can deliver fabrication to any location for your project

- We utilize our strategic partners to ship standard and specialty fabrications nationwide



States we have shipped to:
NY, VT, NH, MA, RI, NJ, VA, OH, TN, NV