

# Fellowes® Array™






The Most Advanced Networked  
Air Quality System



## Healthy Air is Essential to Healthy Spaces



Every organization wants to provide a healthy and comfortable workspace for their teams, customers, and guests. But without an effective air quality strategy, even the most health and wellness focused minded organizations are putting their people at risk. When organizations prioritize HEPA-grade air purification throughout their spaces, the benefits go far beyond better breathing.

-  Improves Productivity
-  Reduces Common Complaints Such as Odors
-  Reduces Absenteeism and Presenteeism
-  Creates a More Positive, Health-Focused Environment
-  Improves Facility Perceptions

## State of Indoor Air Quality



While COVID-19 may no longer be top of mind for some organizations, recent surveys and continued research show that the need to improve IAQ is here to stay. The devastating global impact of the latest pandemic permanently altered public perceptions of indoor air quality and how organizations need to change.

### Employees are aware of the impact of air quality on their health.

The push for cleaner indoor air in our workplaces has been led by public health researchers, national associations and the White House, which have all recognized the role employers, contractors and consultants can play in designing and improving workplaces for better indoor air quality (IAQ). Fellowes surveyed over 1,000-employees of all ages and found that only 1-in-3 said their air was very clean. However, 73%<sup>1</sup> of people surveyed agreed that the quality of the air they breathe directly impacts their health and well-being.

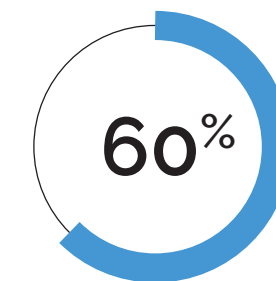
### Employees are demanding more transparency when it comes to IAQ.

According to research conducted by Carbon Lighthouse<sup>2</sup>, over 80% of millennials said they would feel safer returning to the office if they had access to real-time, transparent information on indoor air quality.

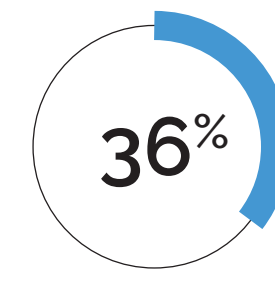
### The demand for healthy workplaces is increasing.

A recent study<sup>3</sup> found that companies appreciated 48% more when compared to the S&P 500 Index over a six-year period when receiving high scores in corporate health and wellness self-assessments. Organizations and their stakeholders are seeking effective solutions to provide optimized air quality without extensive capital investment or disruption of their normal activities.

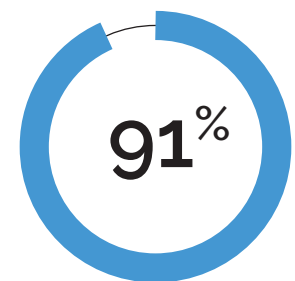
### Employee Perceptions of their workplace



Majority of respondents think their employer is taking the necessary steps to provide clean indoor air in their workplace.



But, only 36% describe it as very clean.



Respondents agree that clean indoor air helps them perform their best at work.

Source 1: Fellowes International Day of Clean Air Survey  
 Source 2: (<https://www.carbonlighthouse.com/blog/consumers-to-drive-u-s-economic-recovery-91-say-indoor-air-quality-critical-in-fight-against-covid-19>)  
 Source 3: Journal of Occupational and Environmental Medicine



## Indoor Environmental Quality

The way spaces are designed to accommodate work, learning, play and life can play a significant role in improving people's overall well-being. Indoor Environmental Quality (IEQ) is impacted by all of the systems that make up a building, which include: the building envelope, thermal comfort (HVAC), air quality, lighting and acoustic systems.

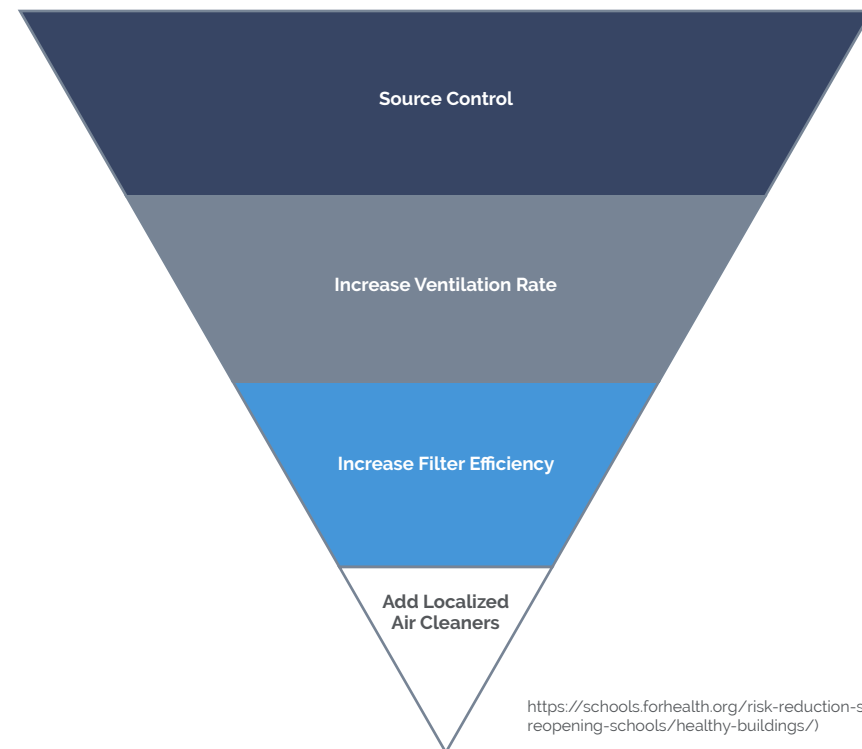
Indoor Air Quality (IAQ) describes the air quality within and around buildings and structures, especially as it relates to the health and comfort of building occupants. Three major reasons for poor indoor air quality are:

- Presence of indoor pollutants
- Poorly designed, maintained, or operated ventilation systems
- Challenges in building design or unintended use

Thermal comfort accounts for 40-60% of a building's energy consumption. Commercial buildings have relied heavily on their HVAC system to distribute clean air inside. In addition, the EPA and Harvard's T.H. Chan School of Public Health have provided guidance that prioritizes increasing ventilation and HVAC filter upgrades as key strategies to improve IAQ. However, emerging evidence indicates that today's HVAC systems, standards, and uses may not be enough to provide the indoor air quality levels expected by businesses and communities today.

### Multi-layer Mitigation Plan to Improve Indoor Air Quality

Harvard's T.H. Chan School of Public Health recommends prioritizing ventilation, filtration, and localized air purification to improve indoor air quality



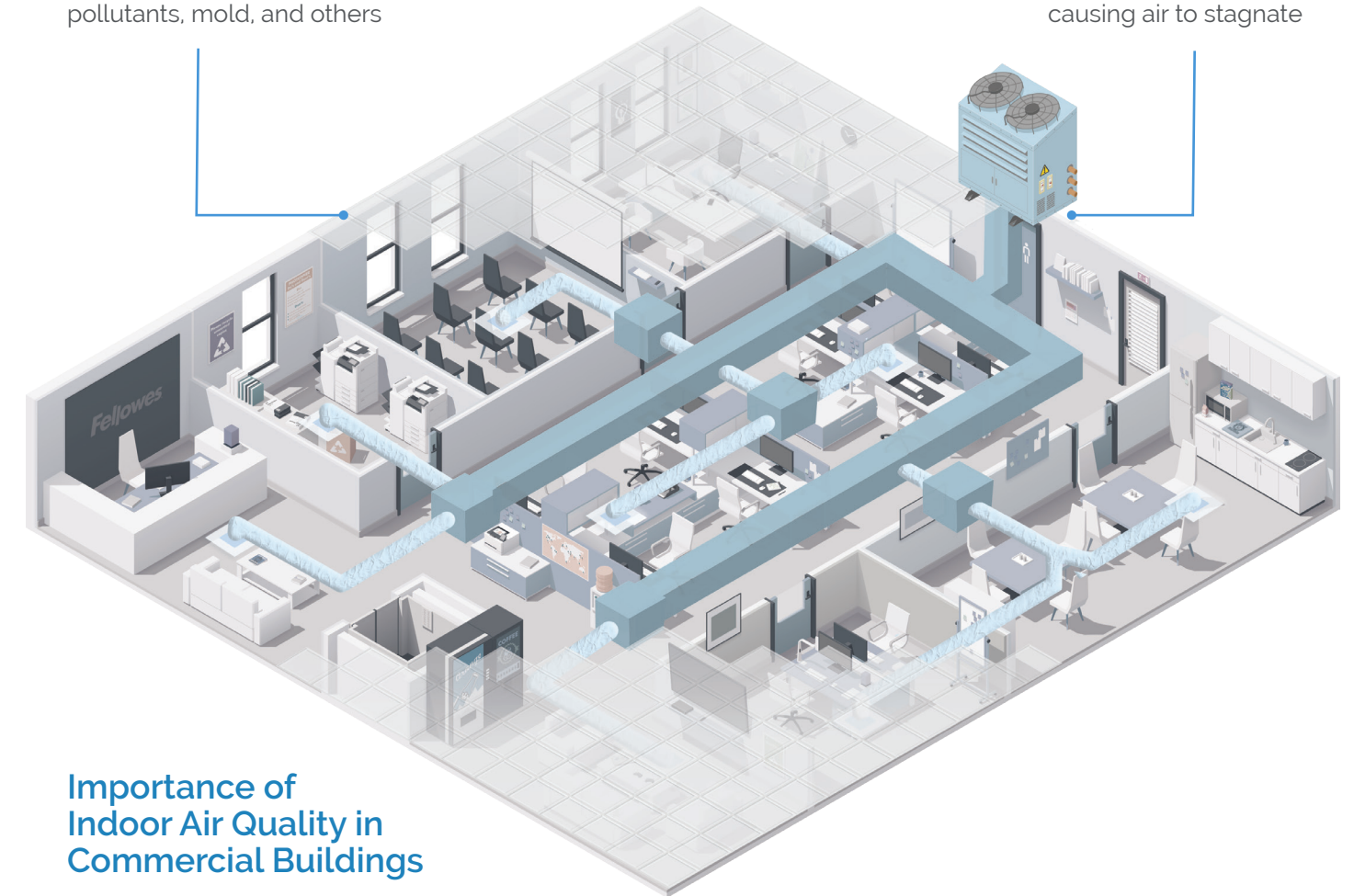
<https://schools.forhealth.org/risk-reduction-strategies-for-reopening-schools/healthy-buildings/>

## The Insight of Air Monitoring

There are over 5.9 million commercial buildings, totaling over 97 billion square feet. In a post-COVID environment, many organizations and property managers are looking to redesign, reconfigure and reimagine their spaces - adding individual huddle rooms to creating larger collaborative spaces. These new spaces may have different ventilation and air quality requirements than what they were originally designed for.

**70%** more contaminants in indoor air due to people, cleaning supplies, building materials, outdoor pollutants, mold, and others

Most HVAC systems recirculate air to boost energy efficiency. However, this does not always occur evenly, causing air to stagnate



### Importance of Indoor Air Quality in Commercial Buildings

While this may seem straightforward, building managers are challenged with trying to balance thermal comfort, increased ventilation and improved IAQ while trying to manage the bottom line.

In January 2021, ASHRAE provided updated COVID-19 guidance that indicated ventilation, filtration, and air cleaners could be combined to deliver "equivalent air changes" to achieve improved IAQ.

**It's time to reevaluate the technologies available to solve these challenges.**

Fellowes recognizes the need for a new category of IAQ, one that reimagines air purification as more than just hardware upgrades. This new approach to the category needs to offer the flexibility and efficacy of individual air purifiers, the sophistication and ability to work alongside HVAC, and the building-wide awareness of air monitoring technology.



# Fellowes Array™

## The Most Advanced Networked Air Quality System

Array is a breakthrough solution that improves indoor air quality faster and more efficiently than ever before. Array uses its proprietary technology to combine the benefits of H13 True HEPA filtration, a full suite of indoor air quality sensors and monitoring with real-time data to monitor, track, and improve building-wide air.

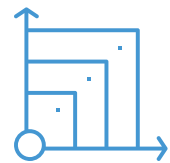
Array is the first system of its kind, where networked air purifiers and commercial HVAC work in complementary harmony throughout your entire space.

Our patented EnviroSmart+™ Technology continuously monitors the environment for changes in occupancy density and conditions of the space and automatically adjusts units to ramp up or down to address a change in contaminants. Array is also powerful enough to deliver an additional 3 to 5 eACH depending on room size. Our thoughtful design pulls contaminants up and out the of the breathing zone while simultaneously pushing clean air out throughout the room to improve ventilation effectiveness, delivering an increase in equivalent room air changes - reducing the stress on your HVAC system and your energy costs.

Fellowes is pioneering a new chapter in indoor air quality management with Array, and more importantly, cleaning indoor air for every breath.







Traditional air purifiers are often obtrusive and distracting, degrading the experience and enjoyment of shared spaces. Fellowes Array is designed to seamlessly integrate with existing architecture and design aesthetics.

Array's air purifiers, sensors, and monitors securely connect over LTE at no charge to form a complete network for optimal air quality in any room, floor and building.

- Scalable to adapt with your building structure, headcount, and purification needs
- LTE-networked units ensure fast, reliable and secure connectivity anywhere

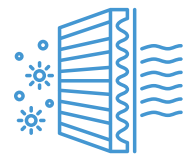
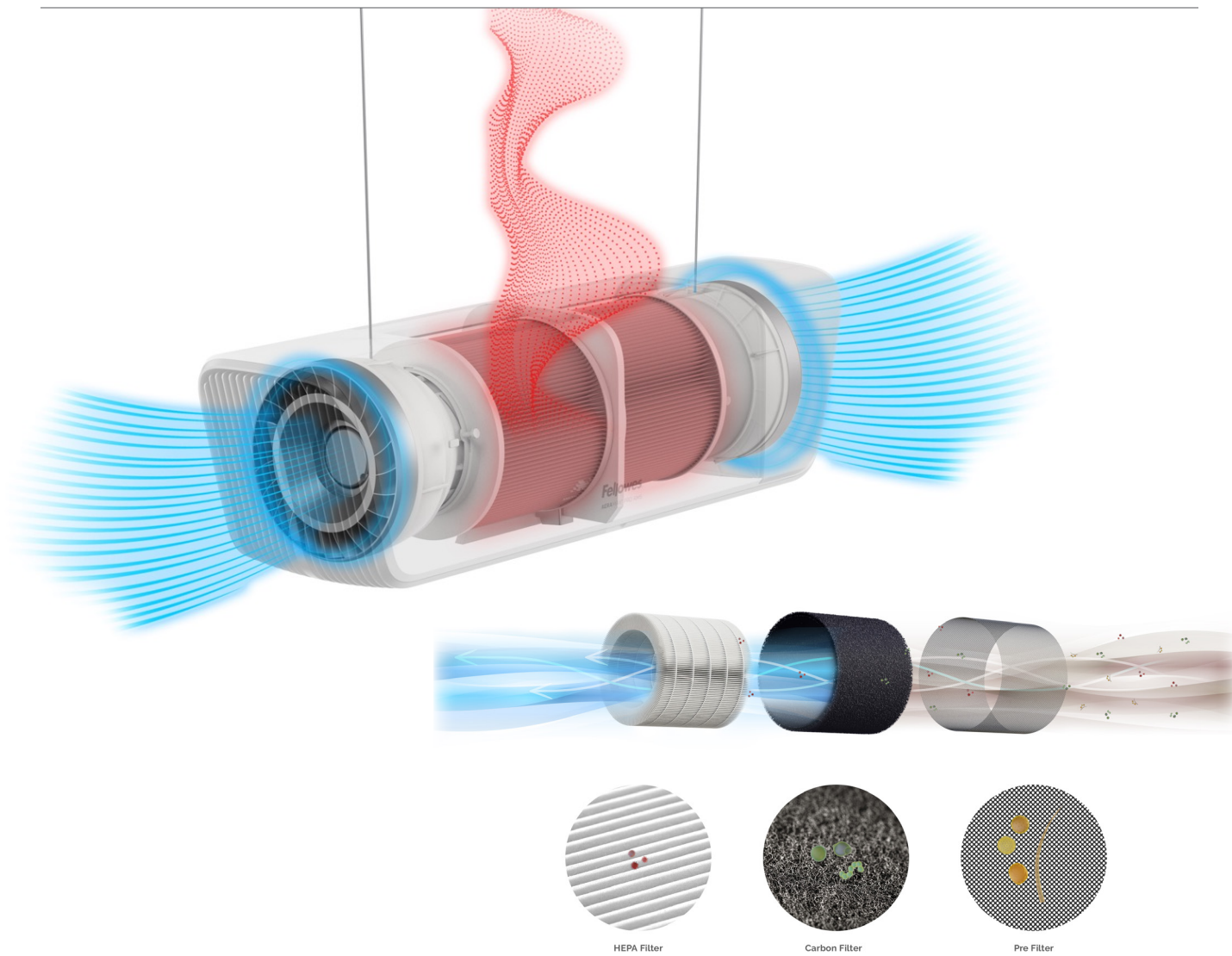


Advanced suite of EnviroSmart+™ sensors proactively monitor their surroundings and automatically respond to deliver clean indoor air as your needs change. This allows our units to work hard when they need to, and shift into standby mode when possible to conserve energy and reduce operating expenses.

- Sensors continuously share and receive air quality data, providing comprehensive insight to how air is moving, degraded, and ultimately purified
- Our full suite of IAQ, monitoring and comfort sensors include particulate (PM2.5, PM10), VOC/TVOCs, CO2, RH, temperature, indoor air pressure, light, occupancy and sound
- With the ability to create networked zones, Array units use proprietary sensor sharing technology to work as a system to detect contaminants and clean the air faster and more efficiently



## Effective & Efficient Filtration



Our 3-in-1 filter is 99.95% effective in capturing particles as small as 0.1 microns including viruses, allergens and germs. The mixed-flow fan design maximizes air flow while delivering quiet operation.

- Designed for demanding, continuous use, Fellowes filters feature a one year filter life
- UVC enabled units kill bacteria, viruses, VOCs, and other airborne contaminants

## Monitoring & Real-Time Data with Viewpoint



Smart air purification that connects back to you. Array's intuitive monitoring and display technologies tell you the exact air quality status of your space in real-time.

- Viewpoint displays concurrent data, notifications, trends and information that enables optimal indoor Air Quality Management available with every Array device at no charge. All units connect through building-wide, secure LTE
- Building managers can schedule maintenance needs, track air quality over time, and identify correlations with energy usage\*
- Lookout display shows precise air quality status and filtration progress via a wall-mounted display or desktop display



# Built For Your Building

The complete line of Fellowes Array products work together to provide an intuitive, coordinated response to your air quality circumstances – all designed with a clean, minimalist aesthetic.

Thanks to a range of configurations and installation options, Array is designed to complement and enhance any space.



**Array™ Recess**  
High Performance, Low Profile



**Array™ Recess UVC**  
Light-Powered Disinfection



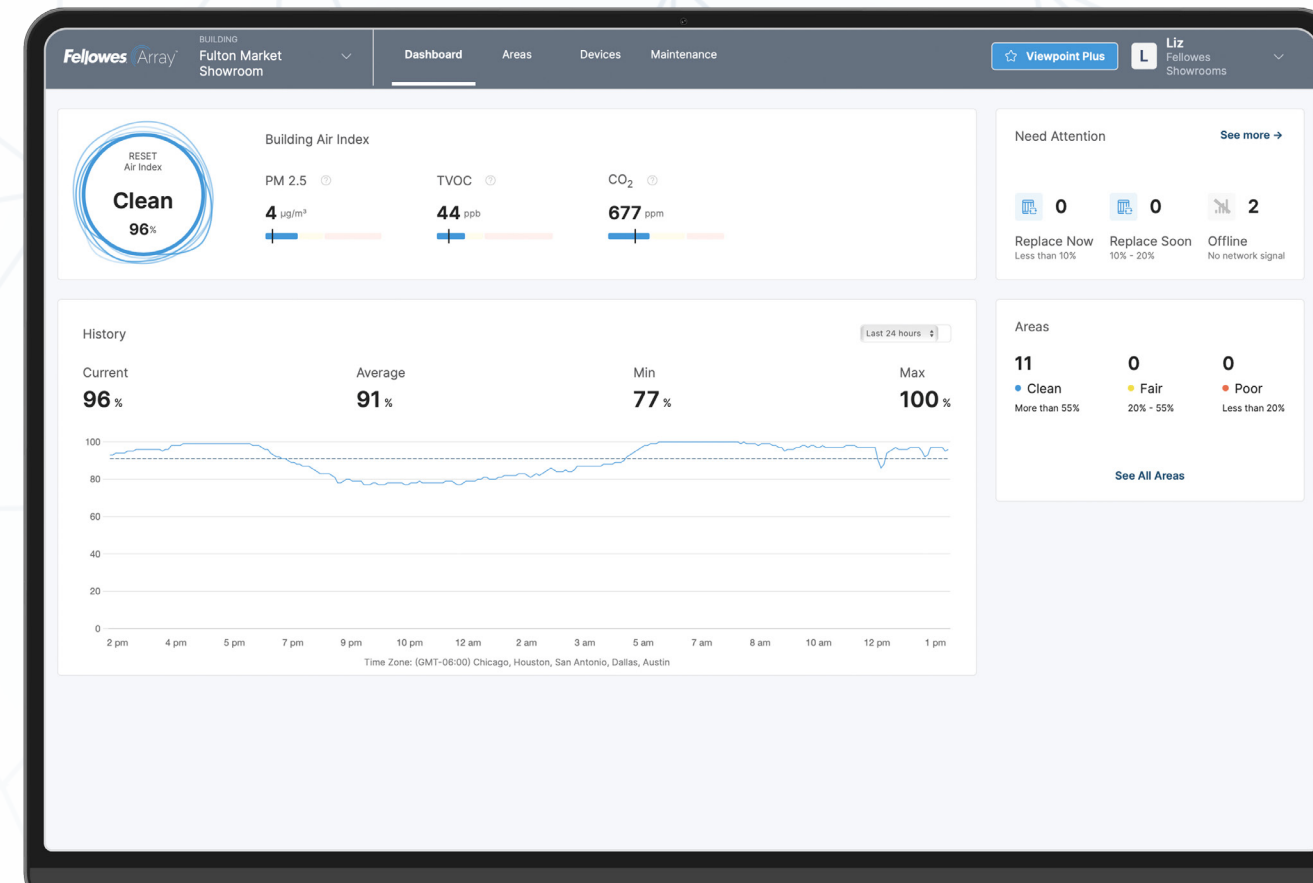
**Array™ Wall**  
Wall to Wall Protection



**Array™ Ceiling**  
Clean Air from Above



**Array™ Lookout**  
The Invisible, Now Visible



**Array™ Stand**  
Designed for Maximum Flexibility



**Array™ Signal**  
Monitor Any Space





AC2 Black Code:  
5889202

AC2 White Code:  
5889201

## Clean Air from Above

Designed to integrate into open ceiling spaces

- Fellowes 3-in-1 filter (prefilter, carbon and H13 True HEPA filtration) is 99.95% effective in capturing molecules as small as 0.1 microns including viruses, allergens and germs and is designed to last for one full year
- Array Ceiling's energy efficient design includes our unique mixed flow fan, designed to maximize air flow while delivering quiet operation
- Suspends from ceilings as high as 20'
- EnviroSmart+™ Technology includes a full suite of comfort and control sensors to continuously monitor contaminants, room occupancy and noise levels and proactively respond to changes. Our integrated suite of indoor air quality (IAQ) sensors includes particulates (PM10, PM2.5), occupancy, temperature, humidity (RH), carbon dioxide (CO2), pressure, and TVOCs
- Access to the Array™ Viewpoint cloud-based dashboard, designed to give users comprehensive visibility into their building's air quality, is included at no charge. All units connect through building-wide, secure LTE
- Designed and engineered for long term use backed with 5-year warranty



### Area Coverage

10 Foot Ceilings

3 ACH  
**1,430**  
Square Feet

5 ACH  
**858**  
Square Feet

12 Foot Ceilings

3 ACH  
**1,191**  
Square Feet

5 ACH  
**715**  
Square Feet

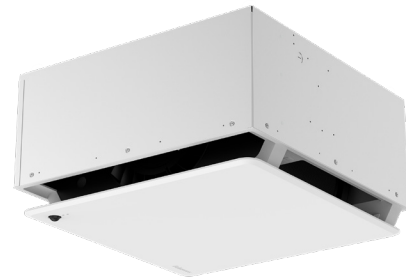




## High Performance, Low Profile

Inconspicuous air filtration that beautifully integrates with the majority of standard grid ceiling systems.

- Fellowes 3-in-1 filter (prefilter, carbon and H13 True HEPA filtration) is 99.95% effective in capturing molecules as small as 0.1 microns including viruses, allergens and germs and is designed to last for one full year
- Array Recess AR2 includes dual filters
- Array Recess units' energy efficient design includes our unique mixed-flow fan, designed to maximize air flow while delivering quiet operation
- EnviroSmart+™ Technology includes a full suite of comfort and control sensors to continuously monitor contaminants, room occupancy and noise levels to proactively respond to changes. Our integrated suite of indoor air quality (IAQ) sensors includes particulates (PM10, PM2.5), occupancy, temperature, humidity (RH), carbon dioxide (CO2), pressure, and TVOCs
- Access to the Array™ Viewpoint cloud-based dashboard, designed to give users comprehensive visibility into their building's air quality, is included at no charge. All units connect through building-wide, secure LTE
- Designed and engineered for long term use backed with 5-year warranty



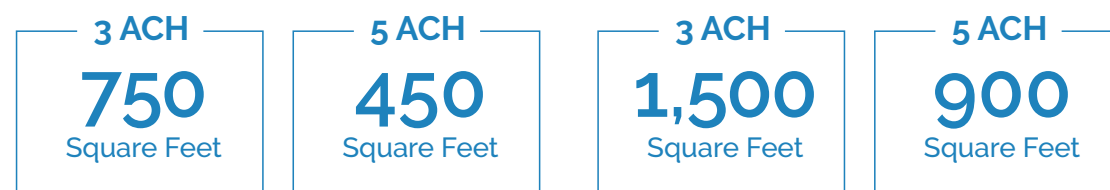
AR1 Code: 5888601



AR2 Code: 5888901

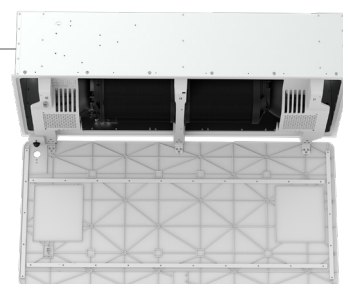
### Area Coverage

8 Foot Ceilings



Recess AR1

Recess AR2



Array's hospital grade H13 True HEPA filtration is 99.95% effective in capturing molecules as small as 0.1 microns including allergens, viruses, and germs.





## Wall to Wall Protection

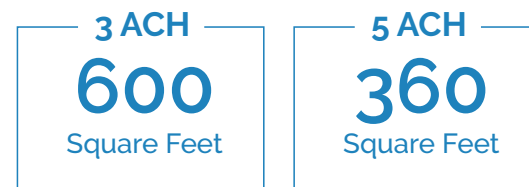
Array™ Wall can be installed on a range of wall materials with minimal installation requirements.

- Clean, subtle design includes integrated Lookout display providing Air Quality status to users of an area
- Fellowes 3-stage filtration (pre-filter, carbon, and H13 True HEPA) Effectively removes at least 99.95% of particles as small as 0.1 microns, including allergens, such as pollen, dust, pet dander, and smoke
- Array AS2 and AW2 include dual hybrid filters
- Equipped with our EnviroSmart+™ Technology which includes a full suite of comfort and control sensors to continuously monitor contaminants, room occupancy and noise levels to proactively respond to changes. Our integrated suite of indoor air quality (IAQ) sensors includes particulates (PM10, PM2.5), occupancy, temperature, humidity (RH), carbon dioxide (CO2), pressure, and TVOCs
- Access to the Array™ Viewpoint cloud-based dashboard, designed to give users comprehensive visibility into their building's air quality, is included at no charge. All units connect through building-wide, secure LTE
- Designed and engineered for long term use backed with 5-year warranty



### Area Coverage

8 Foot Ceilings



Wall AW1/Stand AS1

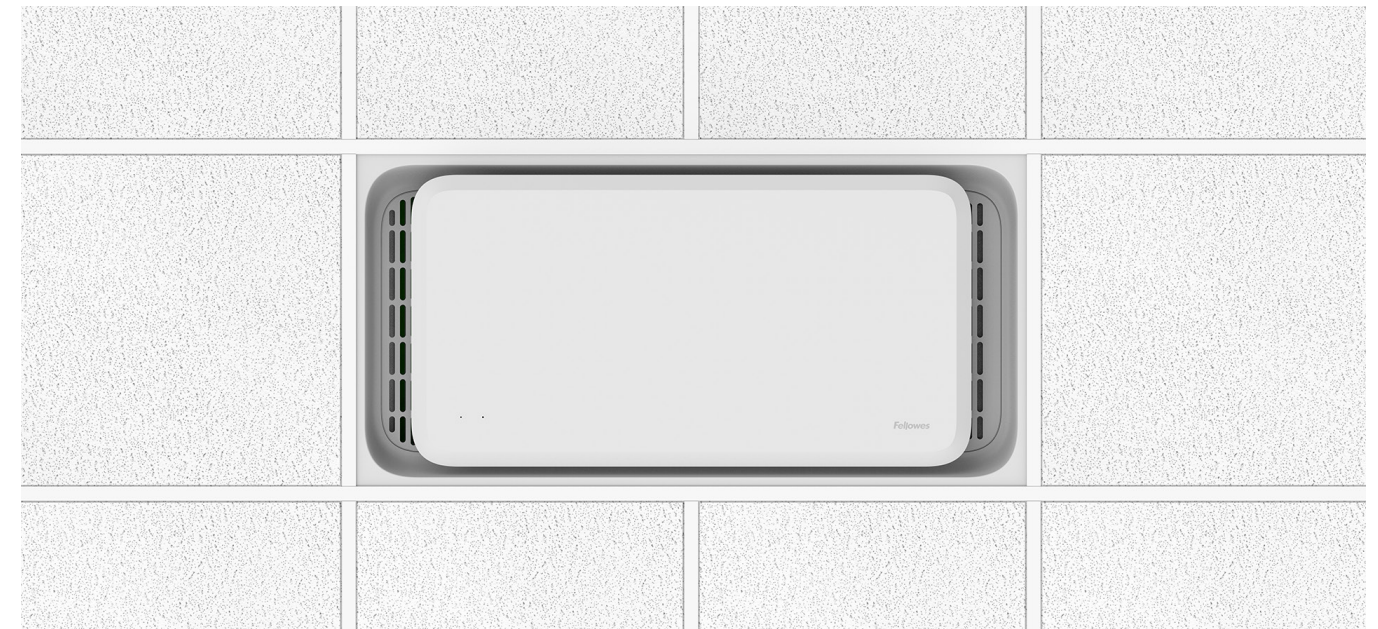
8 Foot Ceilings



Wall AW2/Stand AS2

### Designed for Maximum Flexibility

Array™ Stand can be rapidly moved and repositioned wherever it is needed next, no installation required.



## Light-Powered Disinfection

Sophisticated flush-mount design seamlessly installs into double ceiling tile.

- Clean, subtle design offers integrated and seamless suspended installation in standard grid ceiling and is designed for occupied spaces. The self-contained UV-C chamber is hidden in the ceiling plenum
- Our proprietary and patent-pending ultra-high reflectivity chamber utilizes a shielded all metal chamber, designed to last for the life of the unit
- Array Recess UVC delivers up to 98.1% Single Pass Kill Rate\* and is specially designed to provide dedicated and continuous 24x7 ultraviolet protection against airborne bacteria, viruses, and mold, all while safely hidden overhead and out of sight.
- Easy maintenance and operation
- The AR1 UVC unit includes a pre-filter that keeps the UV chamber free of dust and hair and operates as efficiently as possible
- 9,000-hour bulb only needs changing once per year
- Bottom panel access for easy bulb and filter replacement



AR1 UVC Code: 5889501

### Area Coverage

8 Foot Ceilings



- Access to the Array™ Viewpoint cloud-based dashboard, designed to give users comprehensive visibility into their building's air quality, is included at no charge. All units connect through building-wide, secure LTE
- Designed and engineered for long term use backed with 3-year warranty



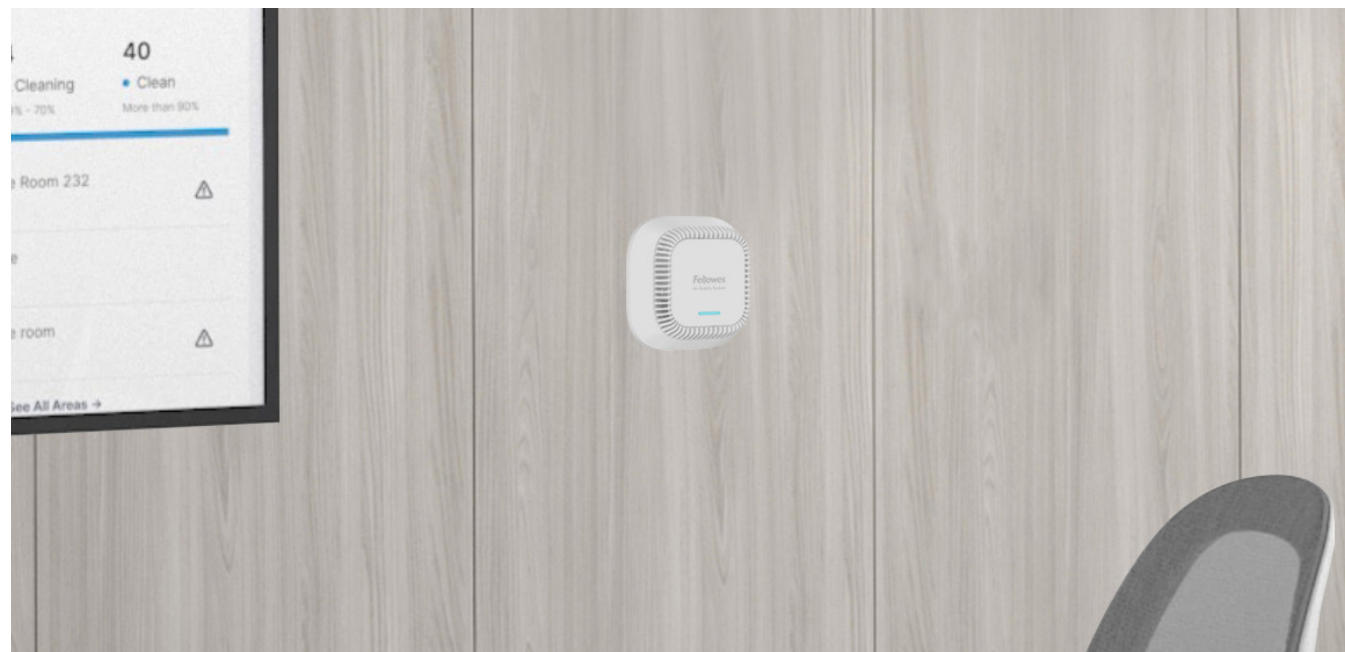
## Monitor Any Space

Signal provides remote monitoring for areas without a dedicated air purifier. Place in smaller offices, transitional areas, or anywhere else without proper ventilation or air monitoring.

- Our Signal monitoring device provides additional IAQ monitoring as part of your overall Array remediation network of air purifiers, or it can operate without connected air purifiers as a standalone IAQ monitor
- Our integrated suite of indoor air quality (IAQ) sensors includes particulates (PM10, PM2.5), temperature, humidity (RH), carbon dioxide (CO2), pressure, and TVOCs
- Signal connects through building-wide, secure LTE to the Array Viewpoint cloud-based dashboard at no charge. Viewpoint gives users comprehensive visibility into their building's air quality
- Sleek design to integrate into your building, offered in both wall mount and desktop options
- Designed and engineered for long term use backed with 3-year warranty



Code: 5885401



Wall Code: 5885901  
Stand Code: 5885801

## The Invisible, Now Visible

Lookout's wall-mounted display shows precise air quality status and filtration progress. Now, anyone can have confidence that their office, room, or workspace is safe.

- With Lookout, you can control Array units assigned to a designated area
- Includes a Quiet button that puts all units in the same room into Quiet Mode
- Lookout offers a sleek design to integrate into your Array units, offered in both wall mount and desktop options
- Lookout connects through building-wide, secure LTE to the Array Viewpoint cloud-based dashboard at no charge. Viewpoint gives users comprehensive visibility into their building's air quality
- Designed and engineered for long term use backed with 3-year warranty





## Data-Informed Decisions

Designed with facilities and operations managers in mind, Viewpoint provides comprehensive air quality data for all of your connected spaces from an easy-to-use dashboard, available with every Array device at no charge. All units connect through building-wide, secure LTE.

Track trends, monitor energy usage, and evolve your air quality strategy – all from one place.

### Viewpoint features include:

- Sensor Sharing between units assigned to an area
- Remote Array unit controls
- Current RESET Air Index at the building, area, or device level
- Device status and filter change notifications
- Multi-level Viewpoint Account Management

### Additional features included with Viewpoint Plus subscription service:

- Timers and scheduling for any unit in your system
- Enhanced sensor sharing and unit controls
- Current and historical data to analyze trends and identify IAQ concerns
- Data export capabilities
- Unit maintenance notifications and advanced troubleshooting
- Real-time filter life measurement and replace history
- Community dashboard
- Future BMS integration







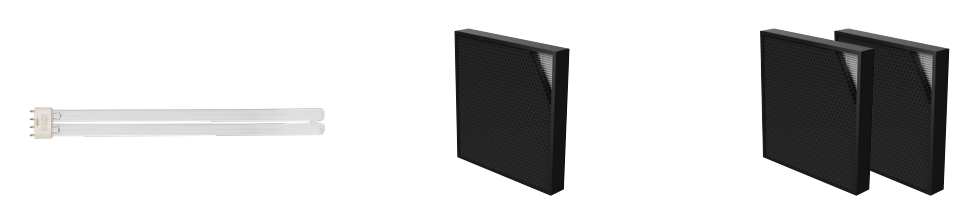
Specs		Array Ceiling AC2		Array Recess AR1			Array Recess AR2		
Area Coverage (sqFT)		Ceiling Height (ft)		Ceiling Height (ft)			Ceiling Height (ft)		
		10	12	8	10	12	8	10	12
eACH	1	4,290	3,575	2,250	1,800	1,500	4,500	3,600	3,000
	3	1,430	1,191	750	600	500	1,500	1,200	1,000
	5	858	715	450	360	300	900	720	600
Product code		W: 5889201, B: 5889202		5888601			5888901		
Fan Speeds (CFM)		136, 186, 333, 504, 715		60, 80, 134, 201, 300			114, 153, 264, 391, 600		
Sound pressure levels, each fan speed (dB)		29, 31, 43, 48, 56		24, 26, 33, 44, 50			26, 27, 36, 47, 54		
Power Requirements (V/Hz/A)		AC120V/60Hz/1.2A		AC120V/60Hz/0.8A			AC120V/60Hz/1.5A		
Power Consumption (Watts)		11, 13, 24, 26, 120		7, 8, 13, 24, 62			9, 12, 23, 45, 120		
EnviroSmart+™ Technology (particulates (PM10, PM2.5), occupancy, temperature, humidity (rH), carbon dioxide (CO2), pressure, and TVOCs)		✓		✓			✓		
IoT Connectivity		LTE		LTE			LTE		
Warranty		5		5			5		
Product Dimensions (L x W x H) (in)		49 x 12.7 x 14.3		23.4 x 23.4 x 12.4			47.3 x 23.6 x 12.4		
Weight (lbs)		47		40.3			76.1		
Electrical Connection		Plug		Hardwire			Hardwire		
UL507		✓		✓			✓		
CARB*		✓		✓			✓		
FCC		✓		✓			✓		
EN1822M		✓		✓			✓		
H1N1		✓		✓			✓		
Rhinovirus		✓		✓			✓		
SARS-CoV-2*		✓		✓			✓		



Filter Type	3-in-1 360° (Pre-Filter, Carbon, H13 True HEPA)	3-in-1 360° (Pre-Filter, Carbon, H13 True HEPA)	3-in-1 360° (Pre-Filter, Carbon, H13 True HEPA)
Filter Code	5890102	5890101	5890102
Filter Rating	H13 True HEPA	H13 True HEPA	H13 True HEPA
Filter Efficiency	99.95% @ 0.1 microns	99.95% @ 0.1 microns	99.95% @ 0.1 microns
Antimicrobial Coating	✓	✓	✓
Estimated Filter Life	1 Year	1 Year	1 Year



Specs		Array Recess AR1 UVC			Array AW1 & AS1			Array AW2 & AS2		
Area Coverage (sqFT)		Ceiling Height (ft)			Ceiling Height (ft)			Ceiling Height (ft)		
		8	10	12	8	10	12	8	10	12
eACH	1	900	720	600	1,800	1,440	1,200	3,000	2,440	2,000
	3	300	240	200	600	480	400	1,000	800	666
	5	180	144	120	360	288	240	600	480	400
Product code		5889501			5884801 (AW1), 5884201 (AS1)			5885101 (AW2), 5884501 (AS2)		
Fan Speeds (CFM)		120			68, 90, 110, 140, 240			120, 150, 200, 260, 400		
Sound pressure levels, each fan speed (dB)		43			AS1: 29, 34, 38, 44, 57 AW1: 28, 33, 38, 44, 56			AS2: 28, 34, 39, 45, 58 AW2: 27, 33, 37, 44, 58		
Power Requirements (V/Hz/A)		AC120V/60Hz/0.9A			AC120V/60Hz/0.9A			AC120V/60Hz/1.5A		
Power Consumption (Watts)		77			6, 9, 13, 24, 96			10, 14, 23, 41, 152		
EnviroSmart+™ Technology (particulates (PM10, PM2.5), occupancy, temperature, humidity (rH), carbon dioxide (CO2), pressure, and TVOCs)		-			✓			✓		
IoT Connectivity		LTE			LTE			LTE		
Warranty		3			5			5		
Product Dimensions (L x W x H) (in)		47.2 x 23.3 x 11			20.9 x 9.7 x 19.6 (AW1) 20.9 x 10.2 x 22.8 (AS1)			34.7 x 9.4 x 19.7 (AW2) 34.7 x 10.6 x 22.8 (AS2)		
Weight (lbs)		62.6			20 (AW1), 25 (AS1)			35 (AW2), 40 (AS2)		
Electrical Connection		Hardwire			Hardwire (AW1), Plug (AS1)			Hardwire (AW2), Plug (AS2)		
UL507		✓			✓			✓		
CARB*		✓			✓			✓		
FCC		-			✓			✓		
EN1822M		-			✓			✓		
H1N1		✓			✓			✓		
Rhinovirus		✓			✓			✓		
SARS-CoV-2*		-			✓			✓		



Filter Type**	UVC Bulb	Hybrid Filter (Carbon, H13 True HEPA)	Hybrid Filter (Carbon, H13 True HEPA)
Filter Code	100016527	9436902	9436902
Filter Rating	-	H13 True HEPA	H13 True HEPA
Filter Efficiency	Up to 98.1% Single Pass Kill Rate***	99.95% @ 0.1 microns	99.95% @ 0.1 microns
Antimicrobial Coating	-	✓	✓
Estimated Filter Life	1 Year	1 Year	1 Year

\* Subject to final compliance certificate

\*\* Includes Pre-Filter

\*\*\*Based on 98.1% Single Pass Reduction in Staphylococcus epidermidis bacteria. The term "Kill" is used to represent the inactivation of pathogens from the UV-C light.





To learn more about Array, visit [New.Fellowes.com/Array](https://www.fellowes.com/array)

## Family-Owned by Four Generations



In 1917, Harry Fellowes set in motion a way of doing business that has become our cultural foundation at Fellowes to this very day. We are here to serve, through a humble and helpful spirit. We strive each day to pursue our values of family, innovation, quality and care. Into our fourth generation, our work is driven by a purpose to add value to those we serve.

Established in 2014, GIVE is a purpose-led program dedicated to supporting local and global partners who are addressing humanitarian's greatest social, education and health-based needs.



### Fellowes: A Global Leader In Localized Indoor Air Quality Solutions



**We Know Air Purification**  
With over 15 years dedicated to breakthrough innovation, scientific testing, and unparalleled customer experience, Fellowes has become the leader in commercial IAQ.



**Quality, Performance, and World-Class Customer Service**  
Fellowes is a private, family-owned manufacturing business. Established in 1917, now in our 4th generation of leadership.



**Designed and Engineered in the U.S.**  
Designed and engineered in our Itasca, IL headquarters, Fellowes proudly provides proprietary IAQ solutions across the globe.



**Customized Planning and Pricing**  
Every project matters. Customized space planning, pricing, and services available through our IAQ experts.



Formed in 2021, Earth is a renewed commitment to preserve, protect and renew our planet. Grounded in a conviction that we have great responsibility in caretaking our generation's imprint on this world, the Earth framework is integrated into our product development process, packaging design, organizational facilities and policies as well as our daily decision-making.



