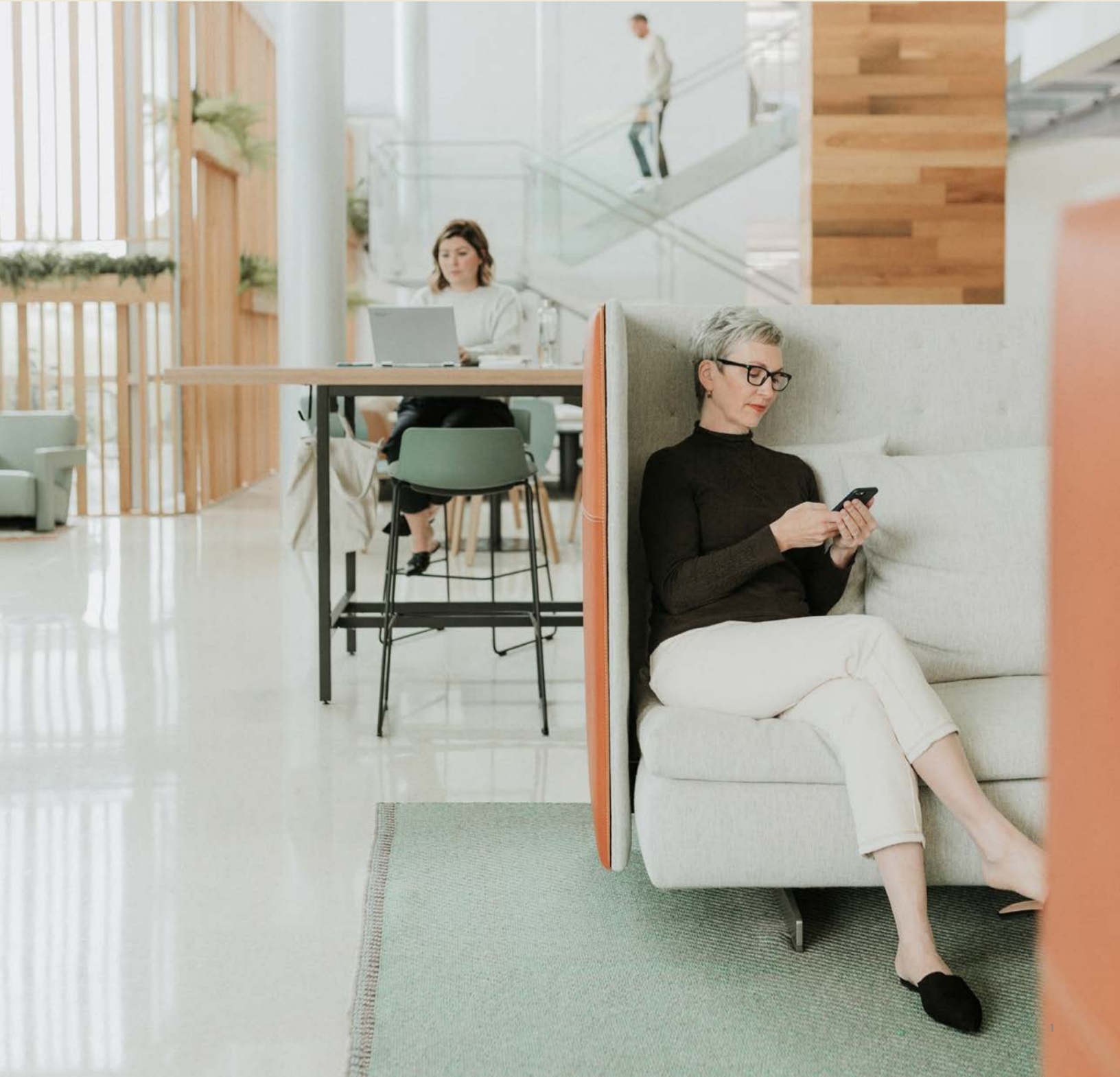


HAWORTH

Work from Anywhere

Social Spaces





Gather, Connect, and Restore

Social Spaces are more important than ever and continue to change. However, their purpose is the same—giving people opportunities to collaborate, focus, and restore. In today’s experience economy, the best places to work engage people’s minds and emotions.

Social Spaces set your organization apart from the crowd—to recruit and retain the best employees and engage customers. They may be indoors or out, from calming to energetic, concentration to celebration. They provide people with posture options—from lounge seating to height-adjustable tables—and foster creativity in open-plan settings. With their grounding elements and residential feel, Social Spaces bring a more human element to the office.

In this catalog, discover new ways to help people thrive. See how we bring hospitality and Social Spaces together in the Haworth Hotel. Get inspired with new sustainable materials, brand additions, and products by world-renowned designers. Explore our broad portfolio of Social Spaces products—everything you need for warmth and comfort in the places people crave.



Features

The Office is the Hub	6
A Sense of Community	12
Emeco: Begin with What's Left Over	20
An Interview with Philippe Starck	26
Green is the New Black	32

Products

Seating

Lounge Chairs	38
Sofas	44
Guest & Side Chairs	48
Conference & Meeting Chairs	54
Café & Dining Chairs	58
Office Chairs	62
Stools	64
Ottomans & Poufs	68
Benches	72

Tables

Occasional & Side Tables	74
Conference & Meeting Tables	78
Café & Dining Tables	82
Training & Work Tables	86

Storage

	88
--	----

Booths

	92
--	----

Accessories

	96
--	----

Lighting

	100
--	-----

Screens & Acoustic Solutions

	104
--	-----

Rugs

	108
--	-----

Outdoor Furniture

	110
--	-----

HAWORTH

HAWORTH
collection



cappellini

Cassina

emeco

GAN

hushoffice

JANUS et Cie

Pablo



(HC - Indicates Haworth Collection)

The Office is

The way we work has changed—catapulted how we lived and worked when challenged by a pandemic. Work is happening in more than one location—from an integrated ecosystem with three space types: office, home, and third places.

the Hub

Many of us missed the office and all the ways it keeps us connected—especially through our unique company cultures and collaboration with coworkers. To support the new hybrid model for working in person and remotely, leaders will likely need to rethink the floorplate to accommodate what employees want: the best work experience regardless of space.

Purposeful workplace design results in the right mix of spaces that help people do their best work. It should incorporate variety and choice with a balance of open and enclosed spaces to support both collaborative and focused activities. Embracing a variety of workstyles and activities unlocks creativity and innovation in people, which drives employee engagement.

In the Work from Anywhere ecosystem, the office is the hub: It's a destination for culture, connection, and collaboration. It's no wonder the fastest growing collaborative spaces are Social Spaces—which are flexible, communal, and inspiring—so people can pause, gather, connect, and restore.

Designing for collaboration helps create an environment where employees feel valued for their unique perspective—and Social Spaces will enrich their experience. Open areas can be optimized using adjacent freestanding architecture. Access to outdoor views offers restoration and recovery, balancing technology with nature. Creating boundaries helps reduce unwanted noise for better focus while still being able to stay connected with colleagues.



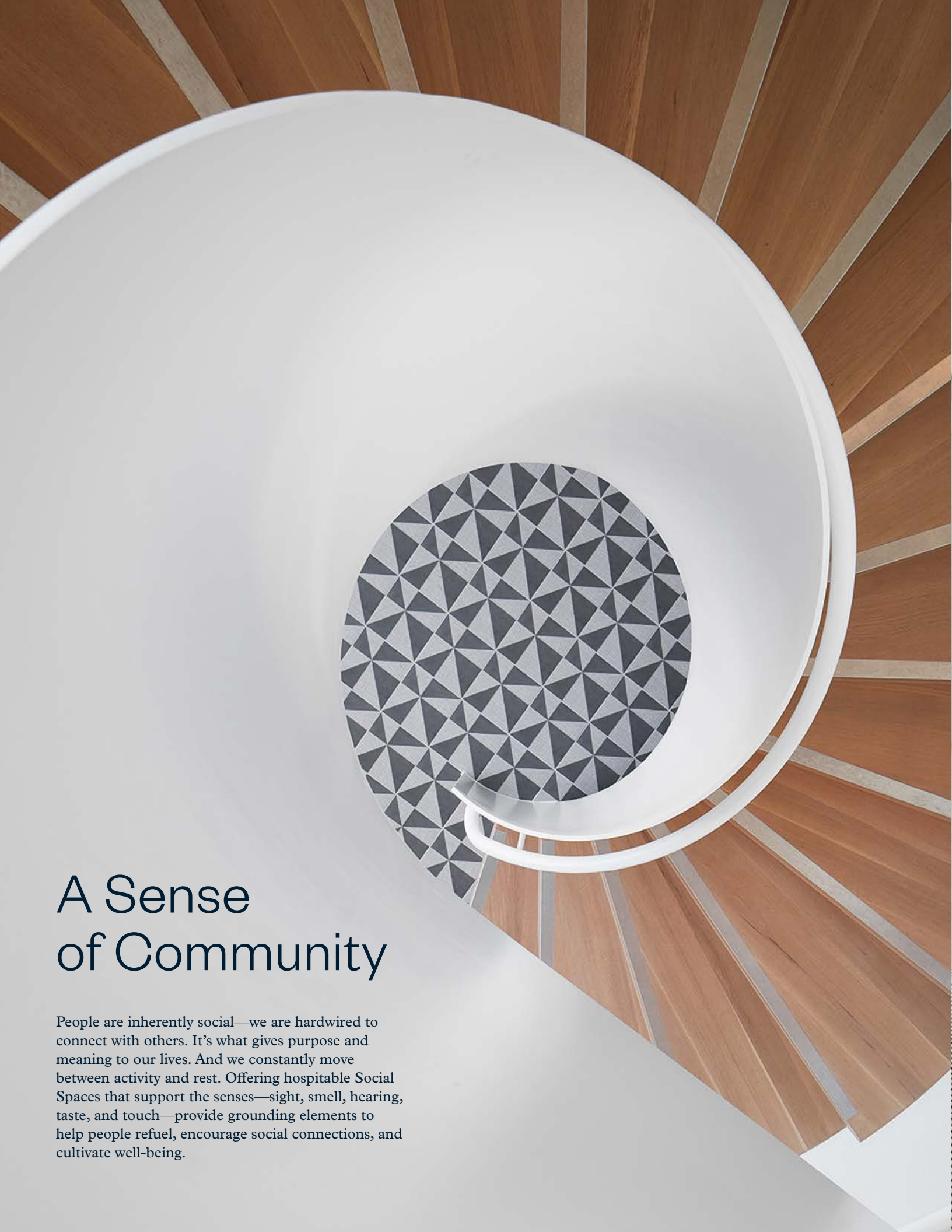
These spaces support the casual, social interactions that build and nurture relationships, which many people have craved since the pandemic began. Taking a break to socialize with colleagues in comfortable furnishings increases people's happiness. From the lighting to the accessories—collaborative Social Spaces enhance the experience for everyone, with a soft, inviting aesthetic to promote well-being and energize team dynamics.

Bringing the outside in makes us feel better, connects us with nature, and fosters well-being.



Creativity flourishes when people can control their space with flexible furnishings that encourage connection and face-to-face interaction. Thoughtfully designed spaces are important to shift behaviors or adopt a new culture—specifically to support the agility of people coming together—whether for listening, brainstorming, meeting, or socializing.





A Sense of Community

People are inherently social—we are hardwired to connect with others. It's what gives purpose and meaning to our lives. And we constantly move between activity and rest. Offering hospitable Social Spaces that support the senses—sight, smell, hearing, taste, and touch—provide grounding elements to help people refuel, encourage social connections, and cultivate well-being.





The hospitality market continues to influence organizations to offer personalized, authentic experiences that make a first (and lasting) impression for both customers and employees. We transferred knowledge of hospitality in the workplace to create an inviting place for customers to stay when they visit our headquarters. The Haworth Hotel is more than lodging—it's also a third place for our community.



When you walk into the hotel lobby, you can't miss the grand spiral staircase that connects the first two floors of the building. Then, choose from a variety of Social Spaces to meet, read, chat, or wait in common areas that create an inviting environment for work and relaxation. Warm, welcoming lounge spaces feature the best of Haworth's global product offering from Cassina, Cappellini, Poltrona Frau, and JANUS et Cie. A coffee bar and café are just steps away, along with touchdown workspaces to accommodate quiet time alone.



Formerly known as the Haworth Inn & Conference Center in Holland, Michigan, the Haworth Hotel underwent extensive transformation to provide our customers with opportunities to engage with our product solutions in a living hospitality environment. Located on the campus of Hope College, the hotel serves a wide audience with multiple spaces. It was designed to foster interactions among Hope College staff and students, community members, and visitors to our global headquarters.

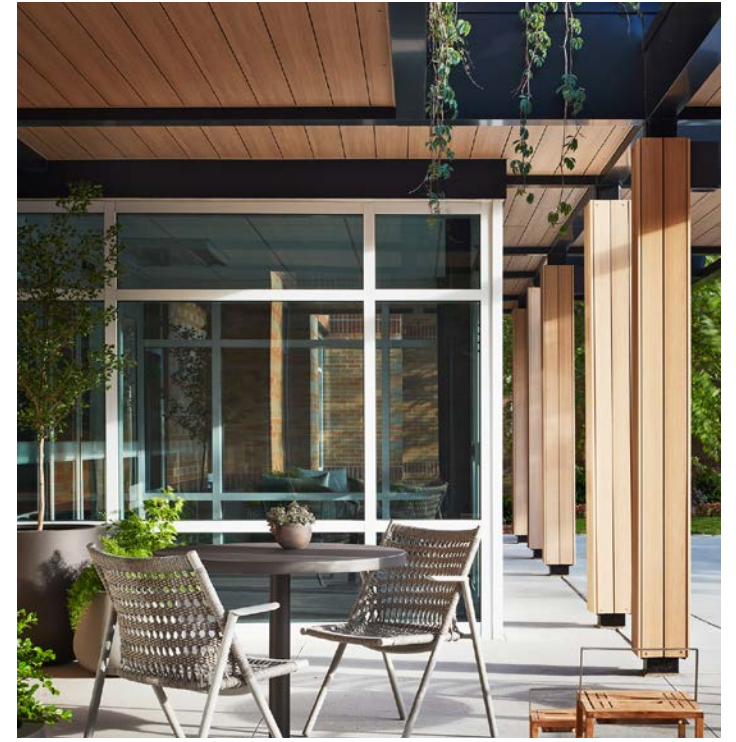


A blend of Haworth products in the hotel's common areas provides training and breakout spaces, and combination meeting and dining areas.





In the warm, welcoming spaces, a variety of elements—lighting by Pablo Designs, rugs by GAN, and textiles by Kvadrat—contribute to the ambience. Outdoor spaces also provide alternative places for groups to restore and connect.



Haworth partnered with Patricia Urquiola and her Milan-based studio to create this signature luxury hotel that blends international design with local charm—Urquiola’s first hospitality project in North America. Studio Urquiola’s extensive experience in retail, product, and hospitality design brings an internationally recognizable ability to balance warmth, playfulness, sophistication, and multiple brand experiences. “We had the possibility for a kind of playground to show all of the furniture, the ideas, and the research we have done with the Haworth group,” says Urquiola.

With 48 guestrooms, including a suite and 14 conference spaces, the Haworth Hotel is a blend of residential and commercial solutions—durable enough to withstand years of accommodating guests and with a vibe that feels like home.





Emeco

Begin with What's Left Over



Turn it into what will last. This is the principle on which American furniture maker Emeco was founded in 1944. Emeco continues this philosophy today by exploring and innovating ways to use consumer and industrial waste, and environmentally responsible resources. The result: simple, timeless furniture that sits lightly on the planet.



For Emeco—one of our newest Haworth Collection partners—owning their impact on the planet is not new—it’s in their DNA. In fact, around 90% of their entire product range is made from recycled materials. Back in 1944, they started with scrap aluminum when they created the first Navy chair for—you guessed it—the US Navy. Today there’s a lot more to reclaim. All their product materials have been carefully selected to have the least possible environmental impact—most are reclaimed or recycled. All are chosen for longevity.

Most of Emeco’s products are produced by hand, with techniques passed down over generations. At their factory in Hanover, Pennsylvania, craftsmen turn scrap aluminum into chairs so strong they guarantee them for life. Cutting, bending, stamping, forming, welding, grinding, heat treating, hand brushing, anodizing—these are just a few of the 77 steps it takes to make their products, which are thoughtfully curated to feature responsibly sourced and recycled materials.

Waste that would otherwise end up in the landfill is often used and reused to create functional yet timeless products, like the 111 Navy chair that was made from recycled plastic bottles, in partnership with Coca-Cola.

Emeco works with the world’s best designers and many of the names you’ll find in the Haworth portfolio—including Jasper Morrison, Philippe Starck, Nendo, and Barber & Osgerby—to make timeless products, built to last. “We know we cannot solve all the world’s problems by making chairs,” says Alev Oztas, Emeco President & CEO. “But our goal is to inspire others, set an example how things can be done more appropriately to solve some of the world’s problems today.”



By manufacturing in the US and sourcing as locally as possible, Emeco helps preserve skills and craftsmanship—and supports the local economy. It also reduces CO₂ emissions from transportation. Which is why Emeco is an ideal partner for Haworth and a recent addition to Haworth Collection. Our shared values of sustainability, craftsmanship, design, and durability make Emeco a natural fit for the Haworth brand portfolio—increasing the breadth of choice for hospitality and Social Spaces, both indoors and out. “With our common values, hand-in-hand together with Haworth,” says Oztas, “I believe we can reach out to more people, inspire them to run their businesses more sustainably, and hopefully add value to both Haworth and their clients’ businesses.”





Philippe Starck is a French inventor, creator, architect, designer, and artistic director with an acute awareness toward ecological implications, enthusiasm for imagining new lifestyles, love of ideas, and concern with defending the intelligence of usefulness. From everyday products like furniture and lemon squeezers to revolutionary mega-yachts, space module habitation, vibrant hotels, and the miraculous technologies of electric cars and bikes, he never stops pushing the limits and criteria of contemporary design. Starck is a true visionary who brings together the art of innovation, democratic design, and ecology to benefit both humans and nature.

Philippe Starck

An Object Must Be Useful Before Being Beautiful





We interviewed Starck to understand what drives his creativity and innovation, which manifested into a rich career with over 10,000 designs. It begins with a vision: Creation, whatever form it takes, must improve the lives of as many people as possible.

Haworth: When and why did you decide to become a designer?

Starck: I was never interested in design; it is a job that chose me and, because I am a coward, I simply accepted it. It was my DNA.

My father was an aeronautical engineer and I learned under his drawing table that for a plane to fly, first you have to create it, and for it to fly you have to be rigorous. There is a logic in my work, a rigor and a desire to talk about something else, to give objects a voice. I have this mental sickness called creativity and I work with intuitions that are verified and constructed. I always remain at the center, at the core of things.

Then I remember my mother, a very pretty woman, a woman of panache. She was very elegant, very funny, very imaginative, very inventive. It is the “panache,” the feminine beauty of being able to transform everything into a dream.



So, I try to bring my creativity, my rigor, and add a kind of general humor about life. In this useless world that design is—as it does not save lives—I do my best to suggest solutions to issues I have identified.

Haworth: Can you speak about your democratic design philosophy and how it influenced your creation of objects that are both attainable and well-designed?

Starck: A long time ago, I invented this concept of democratic design, that is increasing quality—through industrialization—while decreasing the price in order to make it accessible to the greatest number, because when I started, design was elitist. There were beautiful pieces, very costly, made for the very happy few. I hate elitism, and I could not accept that a family had to pay \$10,000 to have dinner with their children. That is why I have fought all my life to take the “zeroes” off of everything.





Now, we can say that almost everybody can afford a high-quality design chair for \$50. Democratic design is not a style. It is a humanism that aims to increase quality in every respect—cultural, qualitative, technological—to lower the price and to share it with as many people as possible. I would much rather make a million proposals at \$1 each, than make one proposal at \$1 million. But there are great people everywhere and why choose if you can work for all.

I have a strategy called “Robin Hood.” I do not steal, but I use these million-dollar projects as advanced research laboratories where I can develop and experiment with new high technologies, new environmentally friendly materials, which are eventually used for mass market products.

Haworth: How has dematerialization influenced your design of objects?

Starck: I have been a pioneer of dematerialization for more than 50 years. Since always, I have had this idea to fight materiality and its vulgarity, which is a paradox because I have been producing materiality. Only the project is elegant, only the dream is elegant.

Dematerialization is the course of history and also the future. At birth, everybody signed a contract with their community. The contract can have different faces, but the base is that everybody has a duty to help their society, their civilization, their animal species.

Designers cannot save lives, but they have a duty to answer questions and find solutions to make obligatory objects bearable. There is not a big future for design like it is today, because dematerialization will be almost completed in less than 20 years. Like the economy, ecology will necessarily remove the superfluous from us. There will not be the possibility of having objects for nothing, because spending energy and matter tomorrow for nothing will not be more acceptable and will be prohibited.

When everything will be dematerialized, there are no more reasons to make design. The smartest ones will understand that a designer is not obliged to produce materiality, they can produce pure service. That is the future of design.

Haworth: How has this approach influenced your work with Cassina and Emeco?

Starck: The idea is to produce less and have more. Cassina is the Italian aristocracy of design and Emeco is the Californian pragmatic intelligence. These companies embody the idea of longevity, timelessness, quality, and creativity, in a way that does not exist anywhere else.

All this can seem a little bit old but it is not old, it is ultra-modern, because today one of the most modern parameters is longevity. To build not for one year, not for five years, for a life, for two lives or five generations. Less matter, less energy for more service and durability. Sustainability is not a choice, it's an urgency. I am completely involved in this.

Haworth: What's been your greatest challenge as a designer?

Starck: Trying to provide opportunities for everyone to be at their best everywhere at anytime.

Haworth: What are you passionate about in life that influences your creativity and innovation?

Starck: I don't have any influences because I don't go out, I don't watch TV, I don't listen to anyone, and I don't understand anything. What I love is us, our genius. We are extraordinary animals of intelligence. I love and admire the most beautiful specimens of human intelligence, such as the great scientists—especially from the beginning of science—like Eratosthenes and Plato. Those who, with a camel, a well, a 30-centimeter stick, were able to measure—with only a 4% error—the size of the Earth.

Then after the great masters are the great teachers, like Victor Hugo, who teach you everything about everything. I am crazy about our evolution. I watch it, I analyze it, I scrutinize it, I try to predict it, I try to understand it. It is the fertile soil on which I work, as creation is obviously something based on evolution.



“If there is no vision, humane, social, or loving, a project doesn't have the legitimacy to exist.”





Green

is the New
Black



Recent changes in our lifestyles have given people the opportunity to think more about their environments—not just their work settings, but the world around us—reinvigorating a push toward circular design. Yet Haworth has been focused on making the world better for a long time. Design thinking permeates everything we do. We are committed to optimizing resources through a closed-loop system with no waste—without sacrificing design principles—for a sustainable future.

In 2022, we introduced three award-winning fabrics: Scapes, Novelty, and Hobson. Repurposed, recycled, biodegradable—whatever sustainable fabric you choose, upcycling is both responsible and beautiful, offering a wide range of colorways and choices in sophisticated design.

Scapes

is as beautiful up close as it is from afar. The organic matelassé design, inspired by nature, captures light and shadow, while adding dimension and warmth to products and space. Variation and intricacies in the weave detail create a bas-relief effect—as if the surface is emerging. Part of the CLEAN IMPACT TEXTILES™ Biodegradable* line, Scapes is a proprietary, “leave-no-trace” solution with a compelling eco story: 91% biodegradation in 1,278 days.

*91% biodegradation in 1,278 days under ASTM D5511 conditions. No evidence of further degradation.



16 colorways, graded for seating and systems furnishings



Novelty



Inspired by classic boucle fabrics that span residential and commercial uses, Novelty's highly textural surface was designed to showcase new yarn developments.

The art and balance of a looping yarn with a classic weave results in this textural, upscale classic. In its construction, Novelty employs a fancy boucle yarn. The plush yarn lends an organic quality to the otherwise structural dobby weave. The result is a non-directional pattern, juxtaposed with heavy and fine yarn weights in the warp and fill, which contributes to the fabric's versatility in a variety of applications. Adding to its unique design, Novelty brings sustainability benefits too. Nearly half of its content comes from REPREEVE® recycled fiber, which means 17 plastic bottles per yard are diverted from landfill. Novelty has it all—timeless appeal and sustainability for upholstery that lasts.



24 colorways ranging from soft light neutrals to saturated hues, suitable for upholstery and vertical surfaces

Hobson

This proprietary fabric is made with 80% ocean bound plastic and post-consumer recycled polyester. Half of this content comes from REPREEVE® Our Ocean®, an initiative that ensures plastic never enters the ocean. Plastic bottles are collected within 50 kilometers of waterways or coastal areas. The waste is sorted and cleaned; then extruded into new fibers, premium yarns, and fabric. The process breathes new life into recycled materials and diverts 33 plastic bottles per yard of Hobson fabric from ever getting into the sea. Using fibers made from ocean bound plastic is one way Haworth provides sustainable fabrics that help improve our environment.

Inspiration for Hobson came from blending an old Scottish herringbone pattern typically seen in vintage menswear with new yarn technology, evoking classic suiting and sophisticated settings in a material that is truly timeless.



26 colorways, with a nod to classic neutrals that push new color trends and saturated color



Lounge Chairs

*Ottoman available

Back-Wing
HC - Cassina
By Patricia Urquiola



Volage EX-S Slim
HC - Cassina
By Philippe Starck



Lady
HC - Cassina
By Marco Zanuso



P22*
HC - Cassina
By Patrick Norguet



Utrecht
HC - Cassina
By Gerrit Thomas Rietveld



Lyda*
HC - Haworth
By Lauren Rottet



Archibald*
HC - Poltrona Frau
By Jean-Marie Massaud



LC2*
HC - Cassina
By Le Corbusier, Jeanneret, Perriand



LC3
HC - Cassina
By Le Corbusier, Jeanneret, Perriand



Poppy Lounge
Haworth
By Patricia Urquiola



Poppy Lounge
Haworth
By Patricia Urquiola



Cabana Lounge Individual Lounge*
Haworth
By Patricia Urquiola



Cabana Lounge Individual Lounge w/ Screen*
Haworth
By Patricia Urquiola



Basket 011
HC - Cappellini
By Ronan & Erwan Bouroullec



Lud'o*
HC - Cappellini
By Patricia Urquiola



Lud'o*
HC - Cappellini
By Patricia Urquiola



Lounge Chairs

*Ottoman available *Acoustic performance

Newood
HC - Cappellini
By Brogliato Traverso



Newood Light
HC - Cappellini
By Brogliato Traverso



Cotone
HC - Cassina
By Ronan & Erwan Bouroullec



Resonate Modular Lounge*
Haworth
By Haworth Design Studio
& Gensler



Elan
HC - Cappellini
By Jasper Morrison



Quinta
HC - JANUS et Cie
By JANUS et Cie



BuzziSpark*
HC - BuzziSpace
By Alain Gilles



Slant*
HC - JANUS et Cie
By Janice Feldman



Wanders' Tulip
HC - Cappellini
By Marcel Wanders



Dalia
HC - Cappellini
By Marcel Wanders



Windowseat*
HC - Haworth
By Mike & Maaik



Kennedee
HC - Poltrona Frau
By Jean-Marie Massaud



Gambetta
HC - Cappellini
By Jasper Morrison



Anatra
HC - JANUS et Cie
By Patricia Urquiola



Anatra
HC - JANUS et Cie
By Patricia Urquiola



Anatra
HC - JANUS et Cie
By Patricia Urquiola



LC4
HC - Cassina
By Le Corbusier, Jeanneret,
Perriand



Low Pad
HC - Cappellini
By Jasper Morrison



Openest Chick
Haworth
By Patricia Urquiola



Orla
HC - Cappellini
By Jasper Morrison



BuzziCane
HC - BuzziSpace
By Wiebe Boonstra & Marc
van Nederpelt



BuzziNordic ST100*
HC - BuzziSpace
By Staffan Thomasen



Harbor Work Lounge*
Haworth
By Nicolai Czumaj-Bront



BuzziMe**
HC - BuzziSpace
By Axel Enthoven



Orla
HC - Cappellini
By Jasper Morrison



GranTorino HB
HC - Poltrona Frau
By Jean-Marie Massaud



Capo*
HC - Cappellini
By Doshi Levien



Auckland*
HC - Cassina
By Jean-Marie Massaud



Bandas Space
HC - GAN
By Patricia Urquiola



Gigi II
HC - JANUS et Cie
By JANUS et Cie



Riverbend*
Haworth
By Fletcher Vaughan



ToDo
Haworth
By CSD Studio



Lounge Chairs

*Ottoman available

Resonate*

Haworth
By Haworth Design Studio &
Gensler



Embroidery Simple

HC - Cappellini
By Johan Lindstén



Atwell

Haworth
By Arne Dassen



Hello

Haworth
By CSD Studio





Sofas

*Ottoman available *Acoustic performance

Lyda*
HC - Haworth
By Lauren Rottet



Basket 011
HC - Cappellini
By Ronan & Erwan Bouroullec



Kennedee
HC - Poltrona Frau
By Jean-Marie Massaud



Kennedee Jr.
HC - Poltrona Frau
By Jean-Marie Massaud



LC2*
HC - Cassina
By Le Corbusier, Jeanneret,
Perriand



LC3
HC - Cassina
By Le Corbusier, Jeanneret,
Perriand



LC5
HC - Cassina
By Le Corbusier, Jeanneret,
Perriand



Cabana Lounge
Haworth
By Patricia Urquiola



Openest Feather
Haworth
By Patricia Urquiola



Volage EX-S Slim
HC - Cassina
By Philippe Starck



Utrecht
HC - Cassina
By Gerrit Thomas Rietveld



Cotone Slim
HC - Cassina
By Ronan & Erwan Bouroullec



Lady
HC - Cassina
By Marco Zanuso



BuzziSpark*
HC - BuzziSpace
By Alain Gilles



Gambetta
HC - Cappellini
By Jasper Morrison



Mex-Hi*
HC - Cassina
By Piero Lissoni



Sofas

*Ottoman available

GranTorino HB
HC - Poltrona Frau
By Jean-Marie Massaud



Orla
HC - Cappellini
By Jasper Morrison



Elan
HC - Cappellini
By Jasper Morrison



Slant*
HC - JANUS et Cie
By Janice Feldman



Lyda*
HC - Haworth
By Lauren Rottet



Mex-Hi*
HC - Cassina
By Piero Lissoni



Hobo
HC - Cappellini
By Tina Bunyaprasit & Werner Aisslinger



Resonate*
Haworth
By Haworth Design Studio & Gensler



Hobo
HC - Cappellini
By Tina Bunyaprasit & Werner Aisslinger



Riverbend*
Haworth
By Fletcher Vaughan



Massimosistema*
HC - Poltrona Frau
By Poltrona Frau R. & D.



Atwell
Haworth
By Arne Dassen



SEE!*
HC - JANUS et Cie
By Michael Vanderbyl



Cabana Lounge Island
Haworth
By Patricia Urquiola



Anatra
HC - JANUS et Cie
By Patricia Urquiola



BuzziNordic ST100*
HC - BuzziSpace
By Staffan Thomasen



Anatra
HC - JANUS et Cie
By Patricia Urquiola



BuzziCane
HC - BuzziSpace
By Wiebe Boonstra & Marc van Norderpelt



Quinta
HC - JANUS et Cie
By JANUS et Cie



Modular

Riverbend*
Haworth
By Fletcher Vaughan



Kennedee
HC - Poltrona Frau
By Jean-Marie Massaud



Cabana Lounge
Haworth
By Patricia Urquiola



Massimosistema*
HC - Poltrona Frau
By Poltrona Frau R. & D.





Guest & Side Chairs

*Stacking

Newood*
HC - Cappellini
By Brogliato Traverso



Newood Light*
HC - Cappellini
By Brogliato Traverso



Hi Pad
HC - Cappellini
By Jasper Morrison



LC1
HC - Cassina
By Le Corbusier, Jeanneret,
Perriand



Ginger
HC - Poltrona Frau
By Roberto Lazzeroni



Ginger Ale
HC - Poltrona Frau
By Roberto Lazzeroni



Ginger Ale
HC - Poltrona Frau
By Roberto Lazzeroni



Ginger Ale
HC - Poltrona Frau
By Roberto Lazzeroni



Maari 5-Star Base w/Tablet
Haworth
By Patricia Urquiola



Maari 5-Star Base
Haworth
By Patricia Urquiola



Maari Wood Base
Haworth
By Patricia Urquiola



Maari 4-Star Base
Haworth
By Patricia Urquiola



Maari 4-Leg Base*
Haworth
By Patricia Urquiola



Maari Sled Base*
Haworth
By Patricia Urquiola



Bac
HC - Cappellini
By Jasper Morrison



Bac One
HC - Cappellini
By Jasper Morrison



Guest & Side Chairs

*Stacking

Bac Two
HC - Cappellini
By Jasper Morrison



Archibald Dining Chair
HC - Poltrona Frau
By Jean-Marie Massaud



Cotone
HC - Cassina
By Ronan & Erwan Bouroullec



Cotone Slim
HC - Cassina
By Ronan & Erwan Bouroullec



Poppy Guest Sled Base
Haworth
By Patricia Urquiola



Candor
Haworth
By Pimental-Light-Duffy



Quinta
HC - JANUS et Cie
By JANUS et Cie



Forest
HC - JANUS et Cie
By JANUS et Cie



Caprice
HC - Cassina
By Philippe Starck



Passion
HC - Cassina
By Philippe Starck



Downtown
HC - Poltrona Frau
By Jean-Marie Massaud



Downtown
HC - Poltrona Frau
By Jean-Marie Massaud



Forest*
HC - JANUS et Cie
By JANUS et Cie



1006 Navy
HC - Emeco
By Emeco



1006 Navy*
HC - Emeco
By Emeco



111 Navy
HC - Emeco
By Emeco



Downtown
HC - Poltrona Frau
By Jean-Marie Massaud



Chancellor
HC - Poltrona Frau
By Lievore, Altherr, Molina



Tate Soft*
HC - Cappellini
By Jasper Morrison



Tate Color*
HC - Cappellini
By Jasper Morrison



1951
HC - Emeco
By Adrian van Hooydonk,
BMW Designworks



1 Inch Reclaimed*
HC - Emeco
By Jasper Morrison



1 Inch*
HC - Emeco
By Jasper Morrison



Alfi
HC - Emeco
By Jasper Morrison



**Poppy Guest 5-Star Base
w/ Tablet**
Haworth
By Patricia Urquiola



Poppy Guest 5-Star Base
Haworth
By Patricia Urquiola



Poppy Guest 4-Star Base
Haworth
By Patricia Urquiola



Poppy Guest Wood Base
Haworth
By Patricia Urquiola



Alfi
HC - Emeco
By Jasper Morrison



Alfi Aluminum
HC - Emeco
By Jasper Morrison



Alfi Aluminum
HC - Emeco
By Jasper Morrison



Broom*
HC - Emeco
By Philippe Starck



Guest & Side Chairs

*Stacking

Navy Officer
HC - Emeco
By Philippe Starck



On & On*
HC - Emeco
By Barber & Osgerby



BuzziFloat
HC - BuzziSpace
By Alain Gilles



Gigi II
HC - JANUS et Cie
By JANUS et Cie



Anatra
HC - JANUS et Cie
By Patricia Urquiola



Slant
HC - JANUS et Cie
By Janice Feldman



Resonate
Haworth
By Haworth Design Studio & Gensler



Atwell
Haworth
By Arne Dassen



X99 Guest*
Haworth
By Haworth Germany



Composites*
Haworth
By CSD Studio



Very Side*
Haworth
By Michael Welsh & Nicolai Czumaj-Bront



Very Wire*
Haworth
By Michael Welsh & Nicolai Czumaj-Bront



Zody Guest*
Haworth
By ITO Design



Improv*
Haworth
By Tom Edwards



Juli Collection
HC - Cappellini
By Werner Aisslinger



Juli Collection
HC - Cappellini
By Werner Aisslinger



Juli Collection
HC - Cappellini
By Werner Aisslinger





Conference & Meeting Chairs

Lotus
HC - Cappellini
By Jasper Morrison



Lotus
HC - Cappellini
By Jasper Morrison



Downtown
HC - Poltrona Frau
By Jean-Marie Massaud



Downtown
HC - Poltrona Frau
By Jean-Marie Massaud



X99 Seminar
Haworth
By Haworth Germany



X99 Advanced Seminar
Haworth
By Haworth Germany



Poppy Guest 5-Star Base
Haworth
By Patricia Urquiola



Veda
Haworth
By Daniele Gollinucci



Fern Task
Haworth
By Haworth Design Studio & ITO Design



Zody Task
Haworth
By Michael Welsh & ITO Design



Zody II Task
Haworth
By Haworth Design Studio



Zody LX Task
Haworth
By Haworth Design Studio



Navy Officer
HC - Emeco
By Philippe Starck



Chancellor
HC - Poltrona Frau
By Lievore, Altherr, Molina



Very Conference
Haworth
By Michael Welsh & Nicolai Czumaj-Bront



Very Task
Haworth
By Michael Welsh & Nicolai Czumaj-Bront



Conference & Meeting Chairs

Soji Task
Haworth
By Arne Dassen



Maari 5-Star Base
Haworth
By Patricia Urquiola



Juli Collection
HC - Cappellini
By Werner Aisslinger



Ginger Ale
HC - Poltrona Frau
By Roberto Lazzeroni



BuzziFloat
HC - BuzziSpace
By Alain Gilles



Maari 5-Star Base w/Tablet
Haworth
By Patricia Urquiola



Poppy Guest 5-Star Base w/ Tablet
Haworth
By Patricia Urquiola





Café & Dining Chairs

*Stacking

Archibald Dining Chair
HC - Poltrona Frau
By Jean-Marie Massaud



Ginger
HC - Poltrona Frau
By Roberto Lazzeroni



Ginger Ale
HC - Poltrona Frau
By Robert Lazzeroni



Hi Pad
HC - Cappellini
By Jasper Morrison



Newood*
HC - Cappellini
By Brogliato Traverso



Newood Light*
HC - Cappellini
By Brogliato Traverso



Tate Soft*
HC - Cappellini
By Jasper Morrison



Tate Color*
HC - Cappellini
By Jasper Morrison



Maari Wood Base
Haworth
By Patricia Urquiola



Maari 4-Star Base
Haworth
By Patricia Urquiola



Maari 4-Leg Base*
Haworth
By Patricia Urquiola



Maari Sled Base*
Haworth
By Patricia Urquiola



Cotone
HC - Cassina
By Ronan & Erwan Bouroullec



Cotone Slim
HC - Cassina
By Ronan & Erwan Bouroullec



Bac
HC - Cappellini
By Jasper Morrison



Bac One
HC - Cappellini
By Jasper Morrison



Café & Dining Chairs

*Stacking

Bac Two
HC - Cappellini
By Jasper Morrison



1006 Navy
HC - Emeco
By Emeco



1006 Navy*
HC - Emeco
By Emeco



111 Navy
HC - Emeco
By Emeco



Juli Collection
HC - Cappellini
By Werner Aisslinger



Juli Collection
HC - Cappellini
By Werner Aisslinger



Juli Collection
HC - Cappellini
By Werner Aisslinger



Very Side*
Haworth
By Michael Welsh &
Nicolai Czumaj-Bront



1951
HC - Emeco
By Adrian van Hooydonk,
BMW Designworks



1 Inch Reclaimed*
HC - Emeco
By Jasper Morrison



1 Inch*
HC - Emeco
By Jasper Morrison



Alfi
HC - Emeco
By Jasper Morrison



Very Wire*
Haworth
By Michael Welsh &
Nicolai Czumaj-Bront



Quinta
HC - JANUS et Cie
By JANUS et Cie



Slant*
HC - JANUS et Cie
By Janice Feldman



Gigi II
HC - JANUS et Cie
By JANUS et Cie



Alfi
HC - Emeco
By Jasper Morrison



Alfi Aluminum
HC - Emeco
By Jasper Morrison



Alfi Aluminum
HC - Emeco
By Jasper Morrison



Broom*
HC - Emeco
By Philippe Starck



Forest*
HC - JANUS et Cie
By JANUS et Cie



Forest
HC - JANUS et Cie
By JANUS et Cie



BuzziFloat
HC - BuzziSpace
By Alain Gilles



Improv*
Haworth
By Tom Edwards



Navy Officer
HC - Emeco
By Philippe Starck



On & On*
HC - Emeco
By Barber & Osgerby



Passion
HC - Cassina
By Philippe Starck



Caprice
HC - Cassina
By Philippe Starck





Office Chairs

Office

Fern Task
Haworth
By Haworth Design Studio & ITO Design



Zody Task
Haworth
By Michael Welsh & ITO Design



Zody II Task
Haworth
Haworth Design Studio & ITO Design



Zody LX Task
Haworth
By Haworth Design Studio



Very Task
Haworth
By Michael Welsh



Soji Task
Haworth
By Arne Dassen



Lotus
HC - Cappellini
By Jasper Morrison



Improv H.E.
Haworth
By Steve Nemeth



Executive

Downtown
HC - Poltrona Frau
By Jean-Marie Massaud



Lotus
HC - Cappellini
By Jasper Morrison



Fern Executive
Haworth
By Haworth Design Studio & ITO Design



Zody Executive
Haworth
By Michael Welsh & ITO Design



Very Executive
Haworth
By Michael Welsh



Chancellor
HC - Poltrona Frau
By Lievore, Altherr, Molina



Veda
Haworth
By Daniele Gollinucci





Stools

Newood
HC - Cappellini
By Brogliato Traverso



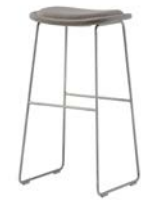
Newood Light
HC - Cappellini
By Brogliato Traverso



Mexique
HC - Cassina
By Charlotte Perriand



Hi Pad
HC - Cappellini
By Jasper Morrison



Ribbon
HC - Cappellini
By Nendo



Morrison Stool
HC - Cappellini
By Jasper Morrison



Tate Soft High Back
HC - Cappellini
By Jasper Morrison



Tate Soft Low Back
HC - Cappellini
By Jasper Morrison



Tate Color High Back
HC - Cappellini
By Jasper Morrison



Tate Color Low Back
HC - Cappellini
By Jasper Morrison



Maari High Back
Haworth
By Patricia Urquiola



Maari High Back
Haworth
By Patricia Urquiola



Maari High Back
Haworth
By Patricia Urquiola



Maari Low Back
Haworth
By Patricia Urquiola



Maari Low Back
Haworth
By Patricia Urquiola



Gigi II
HC - JANUS et Cie
By JANUS et Cie



Stools

*Stacking

1006 Navy
HC - Emeco
By Emeco



111 Navy
HC - Emeco
By Emeco



1951
HC - Emeco
By Adrian van Hooydonk,
BMW Designworks



1 Inch*
HC - Emeco
By Jasper Morrison



Very Side*
Haworth
By Michael Welsh &
Nicolai Czumaj-Bront



Very Wire*
Haworth
By Michael Welsh &
Nicolai Czumaj-Bront



Forest High Back
HC - JANUS et Cie
By JANUS et Cie



Forest Low Back
HC - JANUS et Cie
By JANUS et Cie



Alfi Low Back
HC - Emeco
By Jasper Morrison



Alfi Low Back
HC - Emeco
By Jasper Morrison



Alfi High Back
HC - Emeco
By Jasper Morrison



Alfi High Back
HC - Emeco
By Jasper Morrison



Quinta
HC - JANUS et Cie
By JANUS et Cie



Quinta
HC - JANUS et Cie
By JANUS et Cie



Tilt
Haworth
By Nicolai Czumaj-Bront



Composites
Haworth
By CSD Studios



Broom
HC - Emeco
By Philippe Starck



Emeco Stool*
HC - Emeco
By Philippe Starck



On & On
HC - Emeco
By Barber & Osgerby



Su
HC - Emeco
By Nendo



Improv
Haworth
By Steve Nemeth



Fern Task
Haworth
By Haworth Design Studio &
ITO Design



Very Conference
Haworth
By Haworth Design Studio



Very Task
Haworth
By Haworth Design Studio



Za
HC - Emeco
By Naoto Fukasawa



Morrison Stool
HC - Cappellini
By Jasper Morrison



Alodia*
HC - Cappellini
By Todd Bracher



BuzziMilk
HC - BuzziSpace
By Alain Gilles



Zody Task
Haworth
By Haworth Design Studio



Zody II Task
Haworth
Haworth Design Studio &
ITO Design



Zody LX Task
Haworth
By Haworth Design Studio



Soji Task
Haworth
By Haworth Design Studio





Ottomans & Poufs

*Acoustic performance

Mangas Original
HC - GAN
By Patricia Urquiola



Massimosistema
HC - Poltrona Frau
By Poltrona Frau R. & D.



Pebble
Haworth
By Fletcher Vaughan



Bandas Space
HC - GAN
By Patricia Urquiola



Mangas Space
HC - GAN
By Patricia Urquiola



BuzziSpot*
HC - BuzziSpace
By BuzziSpace Studio



Openest Chick
Haworth
By Patricia Urquiola



Openest Chick
Haworth
By Patricia Urquiola



Openest Chick
Haworth
By Patricia Urquiola



Openest Chick
Haworth
By Patricia Urquiola



Archibald
HC - Poltrona Frau
By Jean-Marie Massaud



Auckland
HC - Cassina
By Jean-Marie Massaud



Capo
HC - Cappellini
By Doshi Levien



LC2
HC - Cassina
By Le Corbusier, Jeanneret,
Perriand



Mex-Hi
HC - Cassina
By Piero Lissoni



Harbor Work Lounge
Haworth
By Nicolai Czumaj-Bront



Ottomans & Poufs

*Acoustic performance

BuzziBalance*
HC - BuzziSpace
By 13&9 Design



BuzziCube*
HC - BuzziSpace
By BuzziSpace Studio



BuzziMe*
HC - BuzziSpace
By Axel Enthoven



BuzziNordic ST100
HC - BuzziSpace
By Staffan Thomassen



BuzziPuzzle*
HC - BuzziSpace
By BuzziSpace Studio



Lud'o
HC - Cappellini
By Patricia Urquiola



Slant
HC - JANUS et Cie
By Janice Feldman



BuzziPouf*
HC - BuzziSpace
By BuzziSpace Studio



Windowseat
HC - Haworth
By Mike & Maaike



SEE!
HC - JANUS et Cie
By Michael Vanderbyl



Resonate
Haworth
By Haworth Design Studio
& Gensler



P22
HC - Cassina
By Patrick Norguet





Benches

Inout
HC - Cappellini
By Jean-Marie Massaud



Mex-Hi
HC - Cassina
By Piero Lissoni



Lyda
HC - Haworth
By Lauren Rottet



Lyda
HC - Haworth
By Lauren Rottet



Cabana Lounge
Haworth
By Patricia Urquiola



Riverbend
Haworth
By Fletcher Vaughan



Run
HC - Emeco
By Sam Hecht & Kim Colin



BuzziPicNic
HC - BuzziSpace
By Alain Gilles



Hobo
HC - Cappellini
By Tina Bunyaprasit & Werner Aisslinger



Quinta
HC - JANUS et Cie
By JANUS et Cie



SEE!
HC - JANUS et Cie
By Michael Vanderbyl



Gambetta
HC - Cappellini
By Jasper Morrison





Occasional & Side Tables

Torei
HC - Cassina
By Luca Nichetto



Gong
HC - Cappellini
By Giulio Cappellini



Bong
HC - Cappellini
By Giulio Cappellini



Openest Sprig
Haworth
By Patricia Urquiola



Lyda
HC - Haworth
By Lauren Rottet



Larkin
HC - Haworth
By Lauren Rottet



Mex-Hi
HC - Cassina
By Piero Lissoni



9
HC - Cassina
By Piero Lissoni



Mush
HC - Cappellini
By Giulio Cappellini



Mexique
HC - Cassina
By Charlotte Perriand



Cicognino
HC - Cassina
By Franco Albini



Volage EX-S
HC - Cassina
By Philippe Starck



Cotone
HC - Cassina
By Ronan & Erwan Bouroullec



Resonate
Haworth
By Haworth Design Studio
& Gensler



Cabana Lounge
Haworth
By Patricia Urquiola



Cabana Lounge
Haworth
By Patricia Urquiola



Occasional & Side Tables

Cabana Lounge
Haworth
By Patricia Urquiola



Cannot
HC - Cappellini
By Michela Catalano & Ilaria Marelli



Smoke
HC - Cappellini
By Marcel Wanders



LC10-P
HC - Cassina
By Le Corbusier, Jeanneret, Perriand



Slant
HC - JANUS et Cie
By Janice Feldman



Slant
HC - JANUS et Cie
By Janice Feldman



Atwell
Haworth
By Arne Dassen



BuzziHub
HC - BuzziSpace
By Alain Gilles



Pip Personal Laptop
Haworth
By Patricia Urquiola



Jive X-Base
Haworth
By Dan Gresham & Dan Grabowski



Fronzoni '64
HC - Cappellini
By A.G. Fronzoni



BuzziNordic ST400
HC - BuzziSpace
By Staffan Thomasen



Planes Disc Base
Haworth
By Nicolai Czumaj-Bront & Daniel Figueroa



Anatra
HC - JANUS et Cie
By Patricia Urquiola



Anatra
HC - JANUS et Cie
By Patricia Urquiola



Run
HC - Emeco
By Sam Hecht & Kim Colin



Run
HC - Emeco
By Sam Hecht & Kim Colin



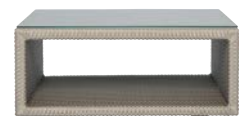
Su
HC - Emeco
By Nendo



Quinta
HC - JANUS et Cie
By JANUS et Cie



SEE!
HC - JANUS et Cie
By Michael Vanderbyl



SEE!
HC - JANUS et Cie
By Michael Vanderbyl



BuzziMilk
HC - BuzziSpace
By Alain Gilles



Slant
HC - JANUS et Cie
By Janice Feldman





Conference & Meeting Tables

Immerse Single

Haworth
By Haworth Design Studio & Patricia Urquiola



Immerse Overlap

Haworth
By Haworth Design Studio & Patricia Urquiola



Immerse Shift

Haworth
By Haworth Design Studio & Patricia Urquiola



Immerse Stack

Haworth
By Haworth Design Studio & Patricia Urquiola



Planes Conference

Haworth
By Dan West



Planes Column Base

Haworth
By Dan West



Jive Bridge Base

Haworth
By Dan Gresham & Dan Grabowski



BuzziPicNic

HC - BuzziSpace
By Alain Gilles



Bac

HC - Cappellini
By Jasper Morrison



Bac

HC - Cappellini
By Jasper Morrison



BuzziMilk

HC - BuzziSpace
By Alain Gilles



Branch

HC - Cappellini
By Jakob Wagner



Naan

HC - Cassina
By Piero Lissoni



A5 Executive

Haworth
By Steffen Lipsky



LC15

HC - Cassina
By Le Corbusier, Jeanneret, Perriand



LC6

HC - Cassina
By Le Corbusier, Jeanneret, Perriand



Conference & Meeting Tables

9

HC - Cassina
By Piero Lissoni



Cultivate

Haworth
By Dan West



Run

HC - Emeco
By Sam Hecht & Kim Colin



Su

HC - Emeco
By Nendo



Mesa Due

HC - Poltrona Frau
By Lella & Massimo Vignelli



Cotone

HC - Cassina
By Ronan & Erwan Bouroullec



Immerse Ledge

Haworth
By Haworth Design Studio & Patricia Urquiola



PopUp

Haworth
By Steffen Lipsky



BuzziHub Table

HC - BuzziSpace
By Alain Gilles



LC10-P

HC - Cassina
By Le Corbusier, Jeanneret, Perriand



Fronzoni '64

HC - Cappellini
By A.G. Fronzoni



Pip Collaborative

Haworth
By Haworth Design Studio





Café & Dining Tables

Bac
HC - Cappellini
By Jasper Morrison



Bac
HC - Cappellini
By Jasper Morrison



JANUScafé - Demi-Sec Base
HC - JANUS et Cie
By JANUS et Cie



JANUScafé - Grappa Base
HC - JANUS et Cie
By JANUS et Cie



Planes X-Base
Haworth
By Nicolai Czumaj-Bront &
Daniel Figueroa



Planes Disc Base
Haworth
By Nicolai Czumaj-Bront &
Daniel Figueroa



Jive Disc Base
Haworth
By Dan Gresham &
Dan Grabowski



Jive X-Base
Haworth
By Dan Gresham &
Dan Grabowski



Mexique
HC - Cassina
By Charlotte Perriand



BuzziPicNic
HC - BuzziSpace
By Alain Gilles



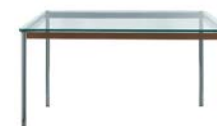
LC6
HC - Cassina
By Le Corbusier, Jeanneret,
Perriand



LC15
HC - Cassina
By Le Corbusier, Jeanneret,
Perriand



LC10-P
HC - Cassina
By Le Corbusier, Jeanneret,
Perriand



Pip Collaborative
Haworth
By Haworth Design Studio



BuzziMilk
HC - BuzziSpace
By Alain Gilles



Branch
HC - Cappellini
By Jakob Wagner



Café & Dining Tables

9
HC - Cassina
By Piero Lissoni



Mesa Due
HC - Poltrona Frau
By Lella & Massimo Vignelli



Cultivate
Haworth
By Dan West



Slant
HC - JANUS et Cie
By Janice Feldman



Anatra
HC - JANUS et Cie
By Patricia Urquiola



Slant
HC - JANUS et Cie
By Janice Feldman



Quinta
HC - JANUS et Cie
By JANUS et Cie



Fronzoni '64
HC - Cappellini
By A.G. Fronzoni



Naan
HC - Cassina
By Piero Lissoni



Cotone
HC - Cassina
By Ronan & Erwan Bouroullec



BuzziHub Table
HC - BuzziSpace
By Alain Gilles



1 Inch
HC - Emeco
By Jasper Morrison



2 Inch
HC - Emeco
By Jasper Morrison



2 Inch
HC - Emeco
By Jasper Morrison



Run
HC - Emeco
By Sam Hecht & Kim Colin



Su
HC - Emeco
By Nendo



Anatra
HC - JANUS et Cie
By Patricia Urquiola





Training & Work Tables

Height-Adjustable Tables

Upside
Haworth
By Haworth



Planes
Haworth
By Dan West



Planes Value Model
Haworth
By Dan West



Mobile & Stationary Tables

Planes C-Leg
Haworth
By Nicolai Czumaj-Bront
& Dan West



Planes Y-Leg
Haworth
By Nicolai Czumaj-Bront
& Dan West



Jive T-Leg
Haworth
By Dan Gresham &
Dan Grabowski



Jive Post Leg
Haworth
By Dan Gresham &
Dan Grabowski



Jive C-Leg
Haworth
By Dan Gresham &
Dan Grabowski



Jive Swivel
Haworth
By Dan Gresham &
Dan Grabowski



Immerse Ledge
Haworth
By Haworth Design Studio &
Patricia Urquiola



PopUp
Haworth
By Steffen Lipsky





Storage

Bookcases

Infinito Wall
 HC - Cassina
 By Franco Albini



Cloud
 HC - Cappellini
 By Ronan & Erwan Bouroullec



Nuvola Rossa
 HC - Cassina
 By Vico Magistretti



Run
 HC - Emeco
 Sam Hecht & Kim Colin



Be_Hold
 Haworth
 By Steffen Lipsky



Be_Hold Be
 Haworth
 By Steffen Lipsky



Storage

X Series Recycling Station
 Haworth
 By Steffen Lipsky



X Series Lockers
 Haworth
 By Steffen Lipsky



Be_Hold
 Haworth
 By Steffen Lipsky



Be_Hold Be
 Haworth
 By Steffen Lipsky



Storage

Credenzas

Luxor
HC - Cappellini
By Giulio Cappellini



Planes
Haworth
By Dan West



A Series
Haworth
By Steffen Lipsky



Be_Hold
Haworth
By Steffen Lipsky



Be_Hold Be
Haworth
By Steffen Lipsky





Booths

*Acoustic performance

GranTorino HB
 HC - Poltrona Frau
 By Jean-Marie Massaud



Cabana Lounge
 Haworth
 By Patricia Urquiola



Cabana Lounge
 Haworth
 By Patricia Urquiola



Openest Conference Booth
 Haworth
 By Patricia Urquiola



Openest Corner Booth
 Haworth
 By Patricia Urquiola



Openest Privacy Booth
 Haworth
 By Patricia Urquiola



Openest Double Booth
 Haworth
 By Patricia Urquiola



Openest Single Booth
 Haworth
 By Patricia Urquiola



Openest Privacy Desk
 Haworth
 By Patricia Urquiola



Openest Single Desk
 Haworth
 By Patricia Urquiola



Openest Double Desk
 Haworth
 By Patricia Urquiola



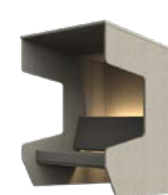
BuzziBooth*
 HC - BuzziSpace
 By Alain Gilles



BuzziHub*
 HC - BuzziSpace
 By Alain Gilles



BuzziVille Hub*
 HC - BuzziSpace
 By Alain Gilles



Riverbend High Back Lounge
 Haworth
 By Fletcher Vaughan



HushHybrid*
 HC - Hushoffice
 By Mikomax Smart Office



Booths

HushMeet*
HC - Hushoffice
By Mikomax Smart Office



HushAccess.L*
HC - Hushoffice
By Mikomax Smart Office



HushPone*
HC - Hushoffice
By Mikomax Smart Office





Accessories

Openest Pillows
Haworth
By Patricia Urquiola



JANUS Pillows
HC - JANUS et Cie
By JANUS et Cie



Bandas Space Pillows
HC - GAN
By Patricia Urquiola



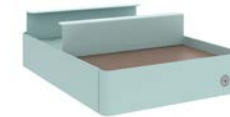
Gran Torino HB Pillows
HC - Poltrona Frau
By Jean-Marie Massaud



Massimosistema Pillows
HC - Poltrona Frau
By Poltrona Frau R. & D.



Active Components
Haworth
By Haworth Design Studio



Belong Work Tools
Haworth
By Ralph Reddig & Bob Wayner



BuzziBox
HC - BuzziSpace
By BuzziSpace Studio



BuzziBox Travel
HC - BuzziSpace
By BuzziSpace Studio



BuzziMirage
HC - BuzziSpace
By Alain Gilles



BuzziPlank
HC - BuzziSpace
By Gerd Couckhuys



Planes Cart
Haworth
By Daniel Figueroa & Dan West



Mobile Cart
Haworth
By Ergotron



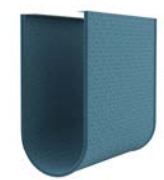
Planes Easel
Haworth
By Daniel Figueroa & Dan West



Openest Coat Hook
Haworth
By Patricia Urquiola



Openest Soft Storage
Haworth
By Patricia Urquiola



Accessories

Belong Power Solutions

Haworth
By Haworth



Workstation Power Solutions

Haworth
By Haworth



Technology Accessories

Haworth
By Ergotron



Buzzibalance Board

HC - BuzziSpace
By 13&9 Design



Collaborative Power Station

Haworth



Bluescape

Haworth
By Jeff Reuschel





Lighting

Floor

Lana

HC - Pablo Designs
By Pablo Studio



Circa

HC - Pablo Designs
By Pablo Studio



Talia

HC - Pablo Designs
By Pablo Pardo & Carmine
Deganello



Contour

HC - Pablo Designs
By Pablo Studio



LIM

HC - Pablo Designs
By Ralph Reddig & Pablo Pardo



Superlight

HC - Pablo Designs
By Peter Stathis &
Matthew Boyko



Tube Top

HC - Pablo Designs
By Peter Stathis



Brazo

HC - Pablo Designs
By Ralph Reddig & Pablo
Pardo



Pendant

Belmont

HC - Pablo Designs
By Brad Ascalon



Bola Disc

HC - Pablo Designs
By Pablo Studio



Bola Felt

HC - Pablo Designs
By Pablo Studio



Cielo

HC - Pablo Designs
By Pablo Studio



Cielo XL

HC - Pablo Designs
By Pablo Studio



Circa

HC - Pablo Designs
By Pablo Studio



Solis Drum

HC - Pablo Designs
By Pablo Studio &
Carmine Deganello



Swell

HC - Pablo Designs
By Pablo Studio



Pendant

BuzziBell*

HC - BuzziSpace
By Chris Hardy



BuzziHat*

HC - BuzziSpace
By Alain Gilles



BuzziJet*

HC - BuzziSpace
By BuzziSpace Studio



BuzziLight Mono*

HC - BuzziSpace
By Sas Adriaenssens



LIM360

HC - Pablo Designs
By Pablo Studio



Superlight

HC - Pablo Designs
By Peter Stathis & Matthew Boyko



Tube Top

HC - Pablo Designs
By Peter Stathis



Brazo

HC - Pablo Designs
By Ralph Reddig & Pablo Pardo



BuzziMoon*

HC - BuzziSpace
By BuzziSpace Studio



BuzziPleat LED*

HC - BuzziSpace
By 13&9 Design



BuzziShade*

HC - BuzziSpace
By BuzziSpace Studio



BuzziProp LED*

HC - BuzziSpace
By Stal Collectief



Corner Office

HC - Pablo Designs
By Peter Stathis & Michael McCoy



Pixo Plus

HC - Pablo Designs
By Fernando Pardo & Pablo Pardo



Pixo

HC - Pablo Designs
By Fernando Pardo & Pablo Pardo



Table

Circa

HC - Pablo Designs
By Pablo Studio



Talia

HC - Pablo Designs
By Pablo Pardo & Carmine Deganello



Contour

HC - Pablo Designs
By Pablo Studio



UMA

HC - Pablo Designs
By Pablo Pardo & Carmine Deganello



UMA Mini

HC - Pablo Designs
By Pablo Pardo & Carmine Deganello



Giraffa

HC - Pablo Designs
By John August



Lana

HC - Pablo Designs
By Pablo Studio



LIM

HC - Pablo Designs
By Ralph Reddig & Pablo Pardo





Screens & Acoustic Solutions

*Acoustic performance

Desk Screens

Belong
Haworth
By Ralph Reddig & Bob Wayner



Belong Plus
Haworth
By Haworth Design Studio



BuzziFrontDesk*
HC - BuzziSpace
By BuzziSpace Studio



BuzziDesk*
HC - BuzziSpace
By Sas Adriaenssens



BuzziDesk FlipFlop*
HC - BuzziSpace
By Alain Gilles



Floor Screens & Room Dividers

BuzziBracks*
HC - BuzziSpace
By Alain Gilles



Pergola
Haworth
By Nathan Shedd & Patricia Urquiola



Openest Plume
Haworth
By Patricia Urquiola



BuzziFalls*
HC - BuzziSpace
By Sas Adriaenssens



BuzziFalls Standing*
HC - BuzziSpace
By Sas Adriaenssens



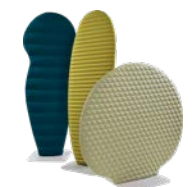
BuzziFree*
HC - BuzziSpace
By BuzziSpace Studio



BuzziCactus*
HC - BuzziSpace
By BuzziSpace Studio



BuzziPlant*
HC - BuzziSpace
By Anthony Duffeleer



Screens & Acoustic Solutions

*Acoustic performance

BuzziBlinds*
HC - BuzziSpace
By Alain Gilles



BuzziScreen Mix*
HC - BuzziSpace
By Sas Adriaenssens



BuzziTotem*
HC - BuzziSpace
By BuzziSpace Studio



Ceiling Suspended and/or Wall Mounted

BuzziZepp*
HC - BuzziSpace
By Alain Gilles &
BuzziSpace Studio



BuzziDonut*
HC - BuzziSpace
By BuzziSpace Studio



BuzziPleat*
HC - BuzziSpace
By 13&9 Design



BuzziHood*
HC - BuzziSpace
By Alain Gilles



BuzziSkin Printed*
HC - BuzziSpace
By Sas Adriaenssens





Rugs

**Indoor and outdoor use

Bandas Space
HC - GAN
By Patricia Urquiola



Bandas Space
HC - GAN
By Patricia Urquiola



Bandas Space
HC - GAN
By Patricia Urquiola



Mangas Space
HC - GAN
By Patricia Urquiola



Mangas Space
HC - GAN
By Patricia Urquiola



Mangas Natural
HC - GAN
By Patricia Urquiola



Mangas Natural
HC - GAN
By Patricia Urquiola



Mangas Original
HC - GAN
By Patricia Urquiola



Mangas Original
HC - GAN
By Patricia Urquiola



Hand Knotted Degradé
HC - GAN
By Patricia Urquiola



Diagonales**
HC - GAN
By Patricia Urquiola



Cord**
HC - GAN
By Patricia Urquiola



Patch**
HC - GAN
By Patricia Urquiola





Outdoor Furniture

*Ottoman available *Stacking

Pillows

JANUS Pillows
 HC - JANUS et Cie
 By JANUS et Cie



Chairs

Forest*
 HC - JANUS et Cie
 By JANUS et Cie



Forest
 HC - JANUS et Cie
 By JANUS et Cie



Gigi II
 HC - JANUS et Cie
 By JANUS et Cie



Slant
 HC - JANUS et Cie
 By Janice Feldman



Quinta
 HC - JANUS et Cie
 By JANUS et Cie



Quinta
 HC - JANUS et Cie
 By JANUS et Cie



1006 Navy
 HC - Emeco
 By Emeco



1006 Navy*
 HC - Emeco
 By Emeco



111 Navy
 HC - Emeco
 By Emeco



1951
 HC - Emeco
 By Adrian van Hooydonk,
 BMW Designworks



1 Inch Reclaimed*
 HC - Emeco
 By Jasper Morrison



1 Inch*
 HC - Emeco
 By Jasper Morrison



Outdoor Furniture

Alfi Aluminum
HC - Emeco
By Jasper Morrison



Alfi Aluminum
HC - Emeco
By Jasper Morrison



Broom*
HC - Emeco
By Philippe Starck



On & On*
HC - Emeco
By Barber & Osgerby



Anatra
HC - JANUS et Cie
By Patricia Urquiola



Anatra
HC - JANUS et Cie
By Patricia Urquiola



Anatra
HC - JANUS et Cie
By Patricia Urquiola



Anatra
HC - JANUS et Cie
By Patricia Urquiola



Lounge Seating

Anatra
HC - JANUS et Cie
By Patricia Urquiola



Gigi II
HC - JANUS et Cie
By JANUS et Cie



Gigi II
HC - JANUS et Cie
By JANUS et Cie



Quinta
HC - JANUS et Cie
By JANUS et Cie



Anatra
HC - JANUS et Cie
By Patricia Urquiola



Anatra
HC - JANUS et Cie
By Patricia Urquiola



Anatra
HC - JANUS et Cie
By Patricia Urquiola



SEE!*
HC - JANUS et Cie
By Michael Vanderbyl



SEE!*
HC - JANUS et Cie
By Michael Vanderbyl



SEE!*
HC - JANUS et Cie
By Michael Vanderbyl



Slant*
HC - JANUS et Cie
By Janice Feldman



Sofas

Quinta
HC - JANUS et Cie
By JANUS et Cie



Quinta
HC - JANUS et Cie
By JANUS et Cie



Slant*
HC - JANUS et Cie
By Janice Feldman



Slant*
HC - JANUS et Cie
By Janice Feldman



Slant*
HC - JANUS et Cie
By Janice Feldman



Anatra
HC - JANUS et Cie
By Patricia Urquiola



Anatra
HC - JANUS et Cie
By Patricia Urquiola



Anatra
HC - JANUS et Cie
By Patricia Urquiola



Anatra
HC - JANUS et Cie
By Patricia Urquiola



Stools

Forest High Back
HC - JANUS et Cie
By JANUS et Cie



Forest Low Back
HC - JANUS et Cie
By JANUS et Cie



Gigi II
HC - JANUS et Cie
By JANUS et Cie



Quinta
HC - JANUS et Cie
By JANUS et Cie



Quinta
HC - JANUS et Cie
By JANUS et Cie



1006 Navy
HC - Emeco
By Emeco



111 Navy
HC - Emeco
By Emeco



1951*
HC - Emeco
By Adrian van Hooydonk,
BMW Designworks



1 Inch*
HC - Emeco
By Jasper Morrison



Broom
HC - Emeco
By Philippe Starck



Emeco Stool*
HC - Emeco
By Philippe Starck



On & On
HC - Emeco
By Barber & Osgerby



Su
HC - Emeco
By Nendo



Za
HC - Emeco
By Naoto Fukasawa



Tables

JANUScafé - Demi-Sec Base
HC - JANUS et Cie
By JANUS et Cie



JANUScafé - Grappa Base
HC - JANUS et Cie
By JANUS et Cie



Quinta
HC - JANUS et Cie
By JANUS et Cie



Slant
HC - JANUS et Cie
By Janice Feldman



Slant
HC - JANUS et Cie
By Janice Feldman



Quinta
HC - JANUS et Cie
By JANUS et Cie



Slant
HC - JANUS et Cie
By Janice Feldman



Slant
HC - JANUS et Cie
By Janice Feldman



Quinta
HC - JANUS et Cie
By JANUS et Cie



Slant
HC - JANUS et Cie
By Janice Feldman



Slant
HC - JANUS et Cie
By Janice Feldman



SEE!
HC - JANUS et Cie
By Michael Vanderbyl



1 Inch
HC - Emeco
By Jasper Morrison



2 Inch
HC - Emeco
By Jasper Morrison



2 Inch
HC - Emeco
By Jasper Morrison



Run
HC - Emeco
By Sam Hecht & Kim Colin



Outdoor Furniture

Tables

Run
HC - Emeco
By Sam Hecht & Kim Colin



Run
HC - Emeco
By Sam Hecht & Kim Colin



Su
HC - Emeco
By Nendo



Su
HC - Emeco
By Nendo



Anatra
HC - JANUS et Cie
By Patricia Urquiola



Anatra
HC - JANUS et Cie
By Patricia Urquiola



Anatra
HC - JANUS et Cie
By Patricia Urquiola



Anatra
HC - JANUS et Cie
By Patricia Urquiola



Umbrellas

JANUS Titan - Tilt
HC - JANUS et Cie
By JANUS et Cie



JANUS Titan - Telescope
HC - JANUS et Cie
By JANUS et Cie

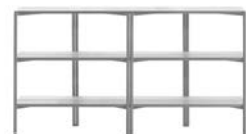


JANUS Titan - Café
HC - JANUS et Cie
By JANUS et Cie



Storage

Run
HC - Emeco
By Sam Hecht & Kim Colin



Bench

Run
HC - Emeco
By Sam Hecht & Kim Colin





A Series, Be_Hold, Be_Hold Be, Belong, Beside, Bluescape, BRAZO, Candor, Caprice, Cultivate, Ergotron, Fern, Harbor Work Lounge, Immerse, Improv, JANUScave, Jive, LC1, LC2, LC3, Maari, Openest, Pebble, Pergola, Planes, Pip, PopUp, Quinta, Riverbend, SEE!, Soji, ToDo, UMA, Upside, Very, Windowseat, X Series, X99, and Zody are registered trademarks of Haworth, Inc.

Active Components, Alodia, Archibald, Atwell, Auckland, Belong, Branch, Cabana Lounge, Cannot, Chancellor, Chick, Cloud, Composites, Inout, Juli 09, Kennedee, Larkin, LC4, LC6, Low Pad, Luxor, Lyda, Massimosistema, Morrison Stool, Plume, Poppy, Resonate, Ribbon, Smoke, Sprig, Tate Color, Tate Soft, Tilt, Utrecht, and Veda are trademarks of Haworth, Inc.