



ikiO
LED LIGHTING

Case Studies

Past Performance

Turkey Creek Project, Tennessee

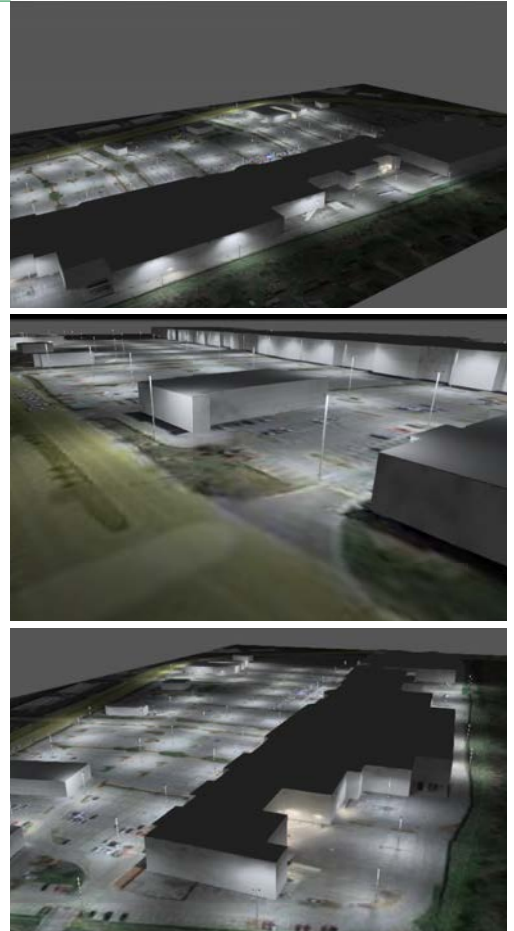
Upgraded the parking area and outdoor spaces of Turkey Creek, East Tennessee's largest shopping center, with energy-efficient LED luminaires. The new solution improved lighting quality and reduced light pollution, creating a safer environment.

- ✓ **286,156.8 kWh/Yr**
Annual Energy Savings
- ✓ **\$26,154.63**
Annual Cost Savings
- ✓ **167**
Fixtures Commissioned
- ✓ **40%**
Improved Lighting Levels

Challenge: The parking area had uneven lighting, compromising visibility and safety, while the excessive light spill affected the surrounding neighborhood's aesthetics.

Resolution: IKIO installed luminaires with weather-resistant components, high-quality lens, and precise beam angles to minimize light issues while enhancing visibility in the parking area. This upgrade resulted in a more durable system with better lighting coverage.

“ **Customer Review**
The difference in the parking area after the upgrade is remarkable. The lighting is brighter and more evenly distributed, and we've seen a substantial reduction in both energy usage and maintenance costs. Our customers have noticed the improvement, feeling safer and more comfortable when visiting, especially at night. IKIO's solution was exactly what we needed. ”



Industrial Facility, Indiana

Upgraded an industrial distribution facility in Indiana with energy-efficient LED fixtures, improving visibility, safety, and energy efficiency. The new lighting system reduced the facility's carbon footprint and operational costs while providing long-lasting performance.

- ✓ **2,299,410 kWh/Yr**
Annual Energy Savings
- ✓ **\$252,935**
Annual Cost Savings
- ✓ **2,978**
Fixtures Commissioned
- ✓ **34%**
Improved Lighting Levels

Challenge: The facility had outdated fluorescent lights, which consumed a lot of energy and required frequent replacements, leading to high operating costs and low visibility.

Resolution: IKIO installed Amplin Linear High Bays, Delphi Low Bays, and Retrofit Troffers, ensuring optimal performance and reducing downtime during installation. The new lighting system provides higher-quality illumination while lowering energy and maintenance costs.

“ **Customer Review**
Partnering with IKIO has elevated our operations. The new LED lights have significantly improved visibility and cut down on energy and maintenance costs. Their support throughout the process was exceptional, and we look forward to future collaborations. ”



Past Performance

Commercial Space, Illinois

A commercial space in Illinois was upgraded with advanced, rebate-eligible lighting solutions. The installation improved energy efficiency, reduced maintenance costs, and enhanced overall lighting quality, benefiting both the staff and the facility's operations.

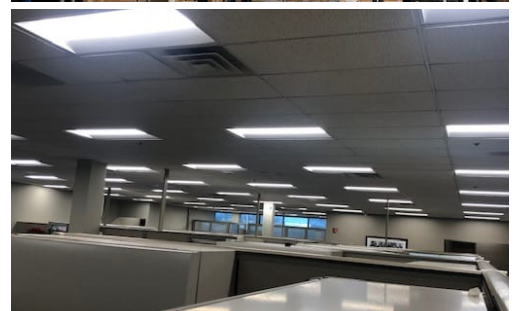
- ✓ **151,200 kWh/Yr**
Annual Energy Savings
- ✓ **\$11,113.2**
Annual Cost Savings
- ✓ **70**
Fixtures Commissioned
- ✓ **60%**
Improved Lighting Levels

Challenge: The facility was struggling with high energy costs, and the management wanted to take advantage of rebate programs to offset the upgrade costs while reducing energy consumption.

Resolution: KIO installed Amplin Linear High Bays and Delphi Retrofit Troffers, designed for optimal energy savings. These fixtures were not only more efficient but also qualified for significant energy rebates, reducing upfront costs. The retrofit was completed with minimal disruption.

“ **Customer Review**
The transformation of our commercial facility with IKIO's lighting solutions has been incredible. Enhanced safety, reduced costs, and better visibility were just some of the things we were looking for, and we got them. Plus, the rebate eligibility was a huge bonus for our bottom line.

”



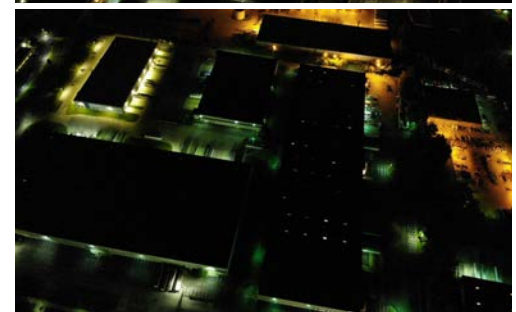
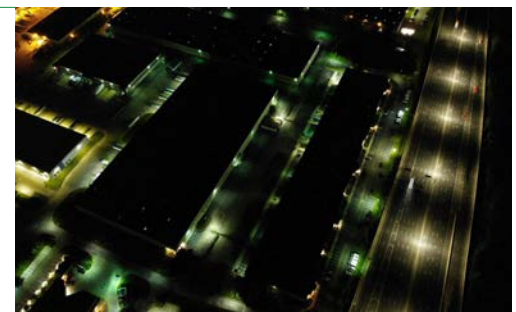
Northwest Industrial Park, Indianapolis

OPPORTUNITY: Northwest Industrial Park - 8219 and 8227, owned by Bianco properties - a commercial property management company, consists of two large buildings. Located in Northwest Blvd. Indianapolis, IN 46278, the NW Blvd property had old HID lighting and several non-working fixtures that led to low light levels for the tenants. This opportunity consisted of replacing these old and non-working fixtures with new LED products that along with rendering better light output will also reduce the operating expense at the property.

SOLUTIONS OFFERED: The Bianco properties choose IKIO's LED Wall Packs and Amparo LED Area Luminaires to replace all their old exterior lighting products. Our lighting partner, LED Indy strategically planned the placement of IKIO's LED products that allowed a better light coverage and also reduced the number of overall fixtures. They converted some of the poles that had three and four lights to two-headed fixtures. This would result in a much lower operating cost along with a reduction in the maintenance expense in the future. To save some money for the customer, LED Indy rewired the feed to the poles from 480v to 277v as 480v compatible drivers are more expensive than the latter. All these replacements and adjustments allowed big savings for this project.

“ **Customer Review**
“This looks great! These are strong pictures that show an aerial of the impact this has on the center!”
Because of the uncommon efficiency that IKIO delivers in their Amparo Series Area Lights, I'm able to massively reduce the energy expense for my customers. I am also able to provide an incredible 10 year warranty and feel good knowing that my customers have a solution they can use for at least a decade.

”



Past Performance

The Elam Center at Martin, Tennessee

OPPORTUNITY: The Kathleen and Tom Elam Center is a large, multi-purpose sports and recreation facility situated on the campus of the University of Tennessee at Martin, TN. Since it features various sports arenas, including seven basketball courts, seven racquetball courts, as well as volleyball and badminton courts, our client wanted lighting solutions that were easy to retrofit, as the project had to be finished as soon as possible.

Apart from several non-working fixtures, there was also a replacement need for old HID lights as they were leading to inadequate light levels and increased energy bills. Sensing an opportunity for a lighting upgrade, our client reached out to us for more efficient LED options that can render better light output and reduce the operating expense at the property.

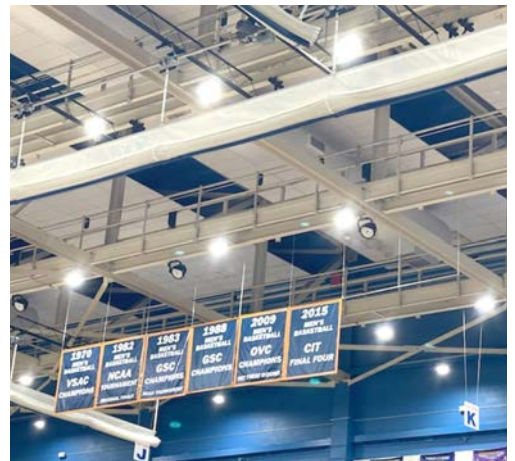
SOLUTIONS OFFERED: After a thorough discussion with our lighting partner — Clear Advantage Lighting — on the best lighting solutions for this specific project, IKIO offered them our best-in-range Prima UFO High Bays and RGBW Stadium Lights. Both of these luminaires are known for superior illumination and decreased energy consumption.

Of all the distributions, they used 300 W and 240 W Prima UFO High Bays and 300 W RGBW Stadium Lights. They strategically planned the placement of all the IKIO's lights, resulting in better coverage and a reduced number of fixtures. This would further result in lower operating costs, as well as a reduction in the overall maintenance expenses in the future. All these replacements and adjustments will allow significant savings for this project in the long run.



Customer Review

The lighting at the center looks great! Both high bay and stadium lights worked efficiently and gave the desired output. The IKIO team was also interactive throughout the project, which made the overall execution very convenient. Overall, happy with the end result.



Metro Facilites, Texas

Eight METRO locations received comprehensive lighting upgrades from IKIO. The process included energy audits, prototyping, and layout analysis to maximize efficiency. With our end-to-end services, all sites were optimized for enhanced energy savings within just 4 months!

✓ **5,546,526 kWh/Yr**

Annual Energy Savings

✓ **\$305,058.86**

Annual Cost Savings

✓ **15,000+**

Fixtures Commissioned

✓ **71%**

Improved Lighting Levels

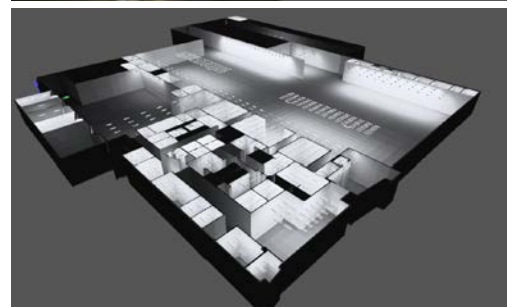
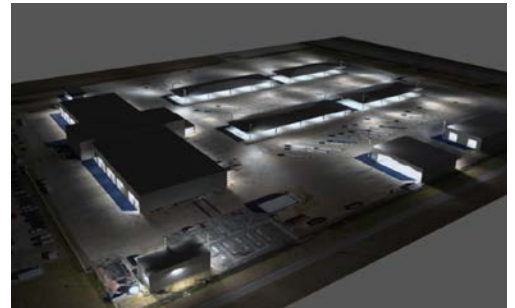
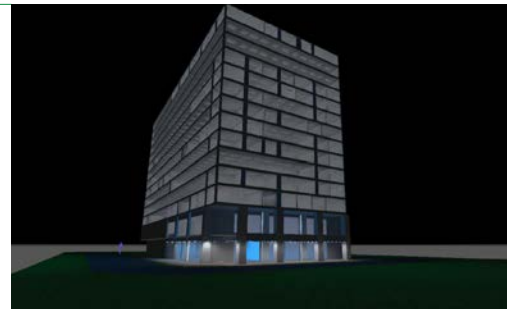
Challenge: METRO needed a comprehensive lighting solution to improve facility illumination, eliminate dark spots, and achieve cost savings, all without disrupting operations.

Resolution: Better lighting coverage was achieved using fewer easy-to-install but high-efficiency fixtures, resulting in a faster upgrade and lasting performance.



Customer Review

Partnering with IKIO for the METRO lighting upgrades was a smooth experience from start to finish. Their team conducted detailed energy audits and offered customized solutions that streamlined everything. The upgrade we delivered exceeded client expectations. We look forward to collaborating with IKIO again, as their services are great!



Guthrie Independent School District (ISD), Oklahoma

The upgrade at Guthrie, featuring precision-engineered optics and advanced ball-tracking, delivered consistent luminance and enhanced visual acuity. This allowed both players and spectators to enjoy the game better and accurately track ball trajectories, even during fast-paced action.

✔ **368,640 kWh/Yr**
Annual Energy Savings

✔ **\$27,095.04**
Annual Cost Savings

✔ **128**
Fixtures Commissioned

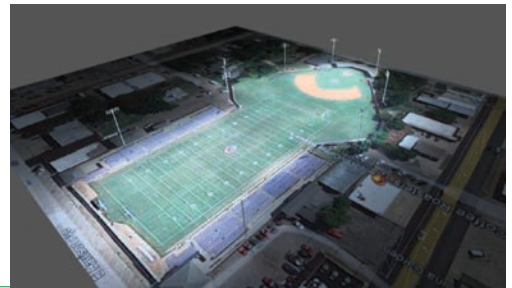
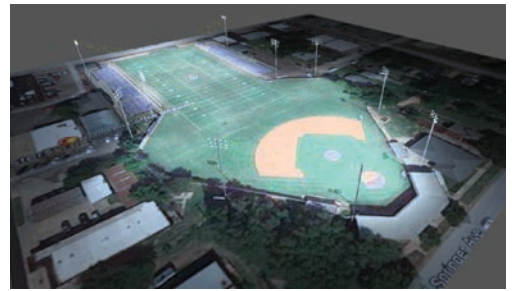
✔ **66%**
Improved Lighting Levels

Customer Review

“ We had been struggling with inadequate lighting for some time. IKIO’s sports lighting solution completely transformed our field. The precision and clarity of the lighting are outstanding, as there are no more dark spots or glare issues. The new system is also low wattage, which is great for energy efficiency. Happy with the outcome and how the upgrade turned out! ”

Challenge: Guthrie faced significant issues with uneven illumination and dimly lit areas on their sports fields, which severely impacted playability.

Resolution: The new system with 160 lm/W efficacy and added ball-tracking solution significantly improved lighting levels while meeting OSSAA standards.



Royal Independent School District, Texas

Baseball Field | Tennis Courts | Softball Field

IKIO provided a full lighting upgrade for Royal ISD’s facility, resolving power fluctuation issues that had impacted the lighting system. The new installation delivered consistent, high-quality illumination while reducing energy consumption and offering long-term cost savings.

✔ **136,290.816 kWh/Yr**
Annual Energy Savings

✔ **\$10,017.37498**
Annual Cost Savings

✔ **92**
Fixtures Commissioned

✔ **50%**
Improved Lighting Levels

Customer Review

“ IKIO’s lighting upgrade solved our power fluctuation issues, ensuring consistent performance during events. The new system has improved visibility, and we’ve seen a significant reduction in both maintenance and energy costs. We’re very happy with the upgrade and the results. ”

Challenge: The previous system frequently experienced power fluctuations, causing inconsistent lighting output and frequent fixture failures, which resulted in higher maintenance costs.

Resolution: IKIO installed high-efficiency fixtures with built-in surge protection, stabilizing lighting output and preventing fixture failures. This upgrade provided more reliable lighting overall.



Tallassee City Schools, Alabama

Football Field | Baseball Field | Softball Field

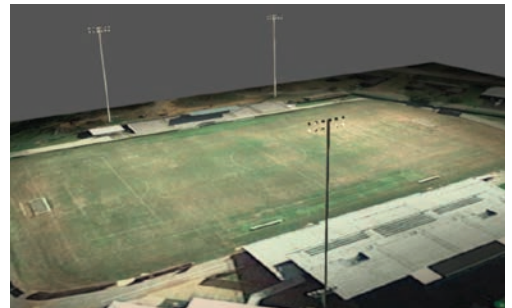
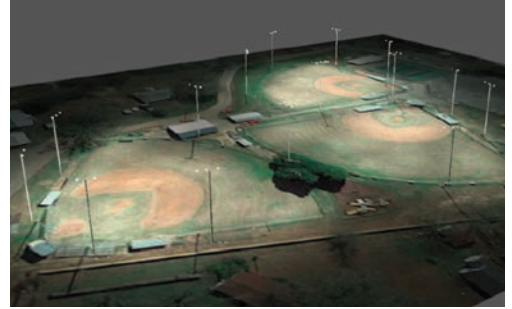
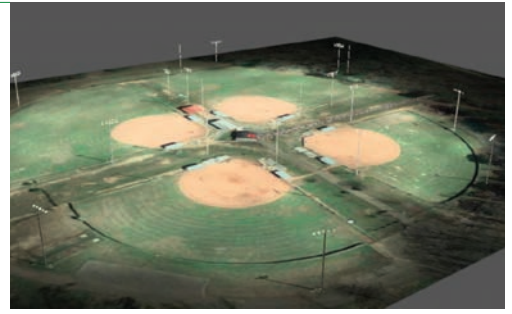
Powered by external drivers, IKIO's sports lighting solution for Tallassee streamlined maintenance with quick driver replacements and diagnostics, eliminating the need for frequent fixture access. This design will significantly reduce labor costs and downtime in the long term.

- ✓ **584,064 kWh/Yr**
Annual Energy Savings
- ✓ **\$42,928.704**
Annual Cost Savings
- ✓ **220**
Fixtures Commissioned
- ✓ **61%**
Improved Lighting Levels

Challenge: Tallassee faced high maintenance costs and operational inefficiencies due to an outdated lighting system that required frequent repairs and replacements.

Resolution: Implemented a centralized component enclosure with external driver and accessible wiring, eliminating the need to directly access fixtures for repairs and reducing labor costs.

Customer Review
Our previous lighting system was inefficient and costly to maintain. We chose IKIO's lighting solution for its reliability and high performance. The new setup has not only reduced our maintenance costs but also significantly improved visibility across all our sports fields. IKIO's solution exceeded our expectations.



Pike High School, Indiana

Baseball Field | Soccer Field | Tennis Courts | Softball Field

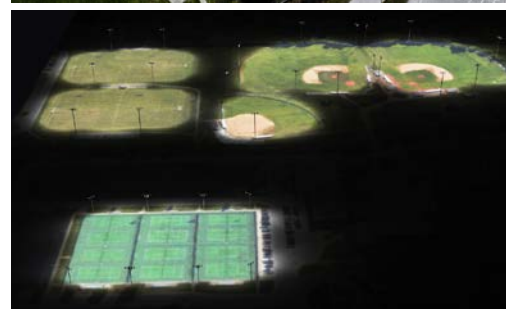
IKIO upgraded Pike High School's sports lighting system, resolving the issue of uneven light distribution across the field. The new system provided balanced, high-quality illumination throughout, enhancing player safety and improving the overall spectator experience.

- ✓ **161,568 kWh/Yr**
Annual Energy Savings
- ✓ **\$11,875.248**
Annual Cost Savings
- ✓ **187**
Fixtures Commissioned
- ✓ **25%**
Improved Lighting Levels

Challenge: Pike's sports arena had uneven lighting, with some areas overly lit while others remained dim, leading to safety concerns for players and reducing gameplay quality.

Resolution: IKIO installed high-efficiency fixtures with precision optics and a Ball Flight Tracker system to ensure uniform light distribution and improved visibility for both players and spectators.

Customer Review
Before IKIO's upgrade, our field had significant lighting inconsistencies, with bright spots and shadows making gameplay difficult. The new system provides perfectly even lighting across the entire field, improving player safety and the overall experience for everyone attending. We're also seeing impressive energy savings.



Past Performance

Bartlesville Independent School District (ISD), Oklahoma

Football Field | Baseball Field | Softball Field

The lighting system installed at Bartlesville Independent School District utilized IKIO's high-efficiency luminaires, engineered for precise light output and optimal power usage. The new lighting reduced energy consumption by up to 80% compared to traditional HID systems.

✓ **691,200 kWh/Yr**
Annual Energy Savings

✓ **\$50,803.20**
Annual Cost Savings

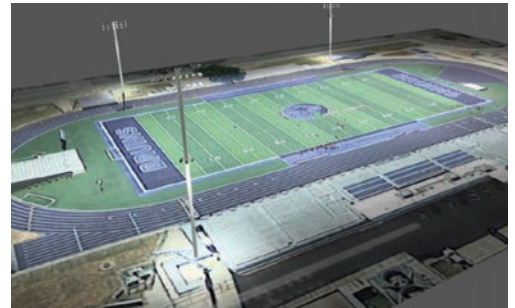
✓ **237**
Fixtures Commissioned

✓ **68%**
Improved Lighting Levels

“ **Customer Review**
IKIO's OLM sports lighting system, along with their tech and site support team, made the upgrade seamless. The fixtures were easy to install, and they even supplied poles and all the necessary accessories for the project. Everything was clearly labeled and organized, with real-time updates throughout the process, ensuring full transparency. Overall, the experience was smooth!

Challenge: Bartlesville ISD's multiple sports facilities urgently required an energy-efficient lighting upgrade due to their existing high-wattage fixtures, which were driving up monthly energy costs.

Resolution: The upgrade featured energy-efficient stadium flood lights with 162 lm/W efficacy, providing uniform illumination at lower wattage and reducing energy consumption by 80%.meeting OSSAA standards.



Russellville Independent School District (ISD), Alabama

Delivered a fast and efficient lighting upgrade with IKIO's easy-to-install fixtures at Russellville ISD, enhancing energy efficiency by 80% and reducing annual electricity consumption by 218,880 kWh, all the while maintaining the schedule.

✓ **218,880 kWh/Yr**
Annual Energy Savings

✓ **\$16,087.68**
Annual Cost Savings

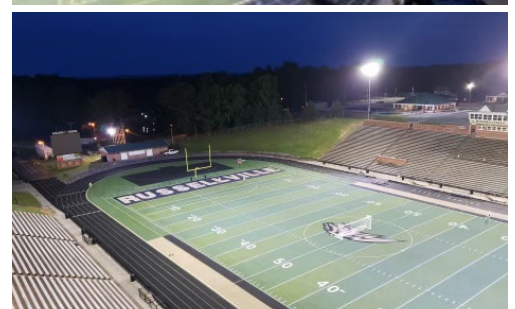
✓ **76**
Fixtures Commissioned

✓ **66%**
Improved Lighting Levels

“ **Customer Review**
The need was for a quick and efficient upgrade and IKIO provided the perfect solution. Their OLM sports lighting system delivered exactly what we were looking for—bright, glare-free illumination with fewer fixtures, and the integration was seamless. The project was completed on time, and the improvements in safety and visibility have been remarkable.

Challenge: Russellville School's sports field required a quick lighting upgrade, as extended closure was not an option for the school.

Resolution: The outdated fixtures were successfully replaced with high-efficiency luminaires, providing enhanced illumination while ensuring the project was completed within the set timeline.



Past Performance

Wylie Independent School District, Texas

IKIO upgraded Wylie ISD's sports fields with high-efficiency fixtures designed to maintain optimal visibility during adverse weather conditions. The new system provided consistent lighting performance regardless of fog or rain, improving both safety and energy efficiency.

✓ **151,200 kWh/Yr**
Annual Energy Savings

✓ **\$11,113.2**
Annual Cost Savings

✓ **70**
Fixtures Commissioned

✓ **60%**
Improved Lighting Levels

Challenge: The outdated system failed to provide sufficient visibility, especially during adverse weather like fog and rain, leading to safety Challenges for players and reduced spectator enjoyment.

Resolution: The upgraded system, featuring high-efficiency fixtures, delivered uniform lighting levels and exceptional visibility during all weather conditions, ensuring consistent performance.

“ **Customer Review**
Before the upgrade, we struggled with visibility during bad weather, and it really impacted our games. IKIO's new system has made a huge difference—the lighting is consistent, even in challenging weather, and we've seen impressive energy savings as well.

”



Trenton Central High School, New Jersey

Upgraded Trenton Central High School's field with high-quality, low-maintenance luminaires, resolving the frequent fixture failures of the previous system. The new solution improved system reliability minimized operational downtime, and significantly reduced maintenance costs.

✓ **60,480 kWh/Yr**
Annual Energy Savings

✓ **\$4,445.28**
Annual Cost Savings

✓ **84**
Fixtures Commissioned

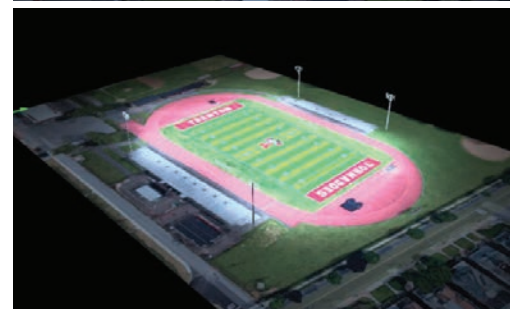
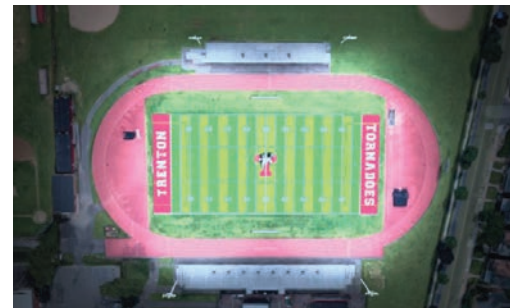
✓ **20%**
Improved Lighting Levels

Challenge: Trenton faced frequent fixture failures, resulting in unexpected downtime and constant lighting replacements, which severely disrupted their maintenance budget.

Resolution: IKIO installed hassle-free, warranty-backed fixtures that ensured reliable performance and reduced the need for frequent replacements. The new system offers enhanced dependability.

“ **Customer Review**
Frequent lighting failures were a constant headache for us, but since the upgrade to IKIO's OLM system, we've had zero issues. The new lights are reliable and energy-efficient, which has helped cut down on our maintenance costs and made the field safer for our events.

”



Oklahoma Panhandle State University, Oklahoma

IKIO's lighting solution addressed Panhandle State University's long-standing issue of light pollution by introducing glare control and precision optics. The upgrade not only reduced spill light in neighboring areas but also enhanced on-field visibility while driving energy savings.

- ✔ **129,600 kWh/Yr**
Annual Energy Savings
- ✔ **\$9,525.6**
Annual Cost Savings
- ✔ **60**
Fixtures Commissioned
- ✔ **50%**
Improved Lighting Levels

“ **Customer Review**
IKIO's solution has effectively reduced our long-standing glare issues. The lighting is now perfectly focused on the field, providing much better visibility for players and spectators, and we've seen a noticeable drop in our energy bills too.

”



Abilene Independent School District, Texas

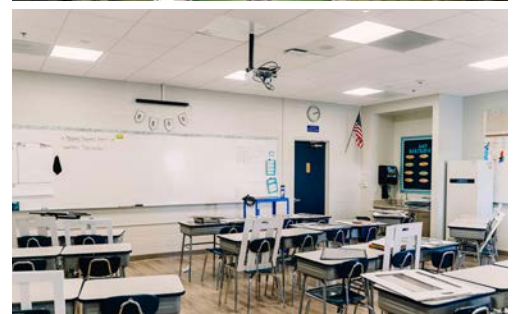
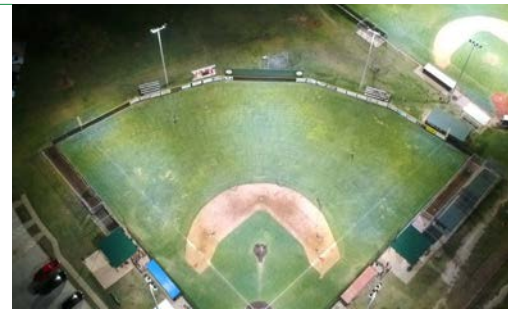
Indoors | Sports Fields | Parking Area

IKIO provided a complete lighting overhaul for Abilene, solving issues with overheating fixtures. The new system delivered consistent, high-quality lighting while reducing downtime and maintenance costs and ensuring smoother operations both indoors and outdoors.

- ✔ **617,616 kWh/Yr**
Annual Energy Savings
- ✔ **\$45,394.776**
Annual Cost Savings
- ✔ **16,000+**
Fixtures Commissioned
- ✔ **60%**
Improved Lighting Levels

“ **Customer Review**
Frequent lighting failures were a constant headache for us, but since the upgrade to IKIO's OLM system, we've had zero issues. The new lights are reliable and energy-efficient, which has helped cut down on our maintenance costs and made the field safer for our events.

”



Images used are for illustration purposes only.





Contact Info:



IKIO LED Lighting

Corporate Office:

8470 Allison Pointe Blvd, Suite 128 Indianapolis, IN 46250

Manufacturing & Distribution:

150 Industrial Pk Rd, Batesville, IN 47006

(1) 844-533-4546 | info@ikioledlighting.com | www.ikioledlighting.com