



National Business Furniture
770 S. 70th Street | West Allis, WI 53214

PRST STD
U.S. POSTAGE
PAID NBF

NBF.com  Get added savings when you opt-in for our emails.*

This mailer is 100% recyclable.

Everything You Need to Create the Perfect Workspace

Expert Help From Selection to Setup

Warranty-Backed Durability

Workspaces that work for you.

Shop quick-ship bestsellers you'll get within the week, or work with our expert team to craft customized options that check all your boxes — from cubicles to collaboration spaces.



Contract Number: COG-2152M

To place an order or get expert support, contact us:
855-449-1237 Monday - Friday 7am – 6pm (CST)



**National Business
Furniture**



2025 Catalog

NBF.com | **855-449-1237**



You can shop via your contract at NBF



National Business
Furniture

We're built to serve you.

One purchase order.
One transaction.
Full compliance.

Call our experts to get contract pricing details
and specialized buying support.

Contract Number: COG-2152M

All Things
Office Furniture

Expert Help From
Selection to Setup

Warranty-Backed
Durability

NBF.com | 855-449-1237

Contact us at 855-449-1237 for expert support or help with placing your order.

View all available product options, sizes and colors **online at NBF.com**

The New Workspace Essentials That Work for Every Workstyle



At Work

Cohesively outfit key spaces in your office with the bestselling At Work Collection. Its streamlined style, modular options and sturdy construction make it a customer favorite. **Quick Ship inventory available.**



- 1. (16093) Adjustable-Height L-Desk w/ Right Return ⚡ \$1,349
- 2. (222323) Credenza and Hutch Set ⚡ \$999
- 3. (228130) Guest Chair ⚡ \$269
- 4. (228129) High-Back Chair ⚡ \$349



(16147) Reversible L-Shaped Desk ⚡ \$979



(228129) High-Back Chair ⚡ \$349



(228130) Guest Chair ⚡ \$269

Durable finishes made from scratch- and stain-resistant laminate provide long-lasting work surfaces.



- 1. (16141) Bowfront Executive Desk ⚡ \$839
- 2. (34577) Hutch ⚡ \$389
- 3. (30626) 2-Drawer Lateral File (2 Shown) ⚡ \$499
- 4. (56622) Harper Mid-Back Executive Chair ⚡ \$299
- 5. (76517) Compass Guest Chair ⚡ \$329



- 1. (14522) Reversible L-Desk ⚡ \$619
- 2. (34561) Mobile File Pedestal ⚡ \$299
- 3. (32161) 3-Shelf Bookcase ⚡ \$229
- 4. (57696) Parker Guest Chair ⚡ \$289
- 5. (57695) Parker High-Back Executive Chair ⚡ \$349



(36749) Storage Cabinet with Glass Doors ⚡ \$449



(34562) Mobile Storage Pedestal ⚡ \$399



(57696) Parker Guest Chair ⚡ \$289

The At Work Collection is a strong go-to for a cohesive look across several spaces.



1. (46445) Reception L-Desk w/ Reversible Return ⚡\$1,499 2. (36806) Storage Credenza ⚡\$799 3. (221451) 10-Compartment Bookcase (2 shown) ⚡\$399



1. (45096) 12' Conference Table ⚡\$1,299 2. (228129) High-Back Chair ⚡\$349



(221399) Mobile Standing-Height Reception Station ⚡\$549



● ● ● ● ● + more
★(226698) New Castle Steel 2-Seat Bench with Designer Upholstery \$569



● ● ● ● ● + more
★(76894) New Castle Steel Guest Chair with Designer Upholstery \$409



(221451) 10-Compartment Bookcase ⚡\$399



(36806) Storage Credenza ⚡\$799



(45075) Round Conference Table ⚡\$499



Easily switch between sitting and standing while working with adjustable-height desks

Electric height adjustment with 4 programmable settings makes it easy to customize sit-stand desk preferences.

1. (16090) Adjustable-Height Desk ⚡ \$899
2. (34562) Mobile Storage Pedestal ⚡ \$399
3. (30630) Lateral File and Storage Cabinet Set ⚡ \$1,149
4. (21427) 52"H Mobile Room Divider ⚡ \$599
5. (226928) Link Task Chair ⚡ \$169

At Work Collection:

Standing Desks (Starting at \$799)

Table desks: 48"W, 60"W and 71"W
L-desk: 60"W and 71"W

Office Desks (Starting at \$299)

Double Pedestal desks: 66"W and 72"W
Bowfront desk: 71"W
Credenza desk: 71"W
Table desks: 48"W, 60"W and 72"W (with or without modesty panel)

L-Desks (Starting at \$619)

Bowfront desk: 71"W
Pedestal desks: 66"W and 71"W
Table desks: 60"W and 72"W (with or without modesty panel)

U-Desks (Starting at \$1,239)

71"W (with or without hutch)

Reception Desk (Starting at \$549)

Mobile or Stationary

Conference Tables (Starting at \$299)

Round: 42" (laminate or metal legs)
Expandable rectangular: 11', 14', 16', 17' and 20'

Flip-Top Training Tables (Starting at \$369)

Available in 48"W, 60"W and 72"W

Bookcases, Filing and Storage (Starting at \$279)

Mobile file pedestals, bookcases, storage cabinets with wood or glass doors, lateral files, wardrobes, hutches and credenzas available

Room Dividers (Starting at \$399)

52"H available in 49"W, 60"W, 73"W
76"H available in 72"W and 96"W



(21428) 76"H Mobile Room Divider ⚡ \$649



(16089) Adjustable-Height Desk ⚡ \$679



★(56069) Linear Vertical Mesh-Back Task Chair ⚡ \$269



(56398) Network Mesh-Back Fabric Seat Task Chair ⚡ \$199



(226995) 3-Drawer Mobile File Pedestal ⚡ 3 \$469



(227013) L-Desk with Adjustable-Height Left Return ⚡ \$2,349



(226994) 2-Drawer Mobile File Pedestal ⚡ 3 \$479



Urban

Distinguish your office with the incredibly versatile Urban collection. Equally impressive and approachable, the collection's weathered finishes and metal accents give it an industrial vibe. **Quick Ship inventory available.**

1. (227016) L-Desk with Adjustable-Height Right Return ⚡ \$2,349
2. (226999) Lower Door Bookcase ⚡ 3 \$759
3. (222185) Raleigh High-Back Chair ⚡ \$469

Distinctive & Ready to Work

Mesh and metal accents complement the rustic wood bases of the Urban Collection



1. (227004) Table Desk \$749 2. (226995) 3-Drawer Mobile File Pedestal \$469 3. (227031) Stacking Shelf w/ Lateral File \$1199
4. (226998) 5-Shelf Bookcase \$659 5. (57534) Arlo Mesh-Back Task Chair w/ Arms \$399



1. (227018) L-Desk with Reversible Return \$1,349 2. (226994) 2-Drawer Mobile File Pedestal \$479 3. (227032) Wardrobe w/ Lateral File \$1,229
4. (57534) Arlo Mesh-Back Task Chair w/ Arms \$399



(227005) Executive Table Desk \$849



(226852) Quarry 9'x12' Area Rug - \$329



(227000) 2-Drawer Lateral File \$719



(57534) Arlo Mesh-Back Task Chair w/Arms \$399



Modular Collaboration

Connect multiple square conference tables to accommodate any size team.

- 1. (227021) Square Conference Table (3 shown) ⚡ \$829
- 2. (227006) Storage Credenza ⚡ 3 \$1,699
- 3. (226998) 5-Shelf Bookcase ⚡ 3 \$659
- 4. (57694) Parker Mid-Back Executive Chair ⚡ \$299



(227021) Square Conference Table ⚡ \$829



(227022) 8' Conference Table ⚡ \$1,659



(57494) Highland Leather Mid-Back Chair ⚡ \$379



(222643) Executive Linen High-Back Chair ⚡ \$209



1. (227017) L-Desk with Reversible Return ⚡ \$1,249 2. (227010) Mobile Divider Panel ⚡ \$1,149 3. (227021) Square Conference Table ⚡ \$829
4. (226233) Lira Ergonomic Mesh-Back Task Chair ⚡ \$199 5. (57694) Parker Mid-Back Executive Chair ⚡ \$299

Urban Collection:

Standing Desks (Starting at \$2,279)
L-desk: 60"W and 72"W

Office Desks (Starting at \$749)
Available in 60"W and 72"W

L-Desks (Starting at \$1,249)
Available in 60"W and 72"W

Conference Tables (Starting at \$829)
Square: 48"
Rectangular: 8'

Bookcases, Filing and Storage (Starting at \$479)
Mobile file pedestals, lateral files, bookcases, storage
cabinets, wardrobes and credenzas available

Room Dividers (Starting at \$1,149)
Available in 72"W x 72"H



● ●
(226233) Lira Ergonomic
Mesh-Back Task Chair ⚡ \$199



● ● ● ●
(226011) Calpernia Faux-Leather
Task Chair ⚡ \$299



● ● ●
(224971) Zola High-Back Mesh Chair
with Removable Headrest ⚡ \$599



(227010) Mobile Divider Panel ⚡ \$1,149

Approachable Sophistication That Works for Your Team

1. (228032) Adjustable-Height L-Desk w/ Left Return ♣ \$1,999 2. (228036) Lateral File w/ Hutch ♣ \$1,199
3. (227836) Storage Credenza ♣ \$999 4. (226444) Rivet High-Back Task Chair ♣ \$399



Trenton

Create inviting workspaces with the Trenton Collection's warm finish and range of stylish storage options. Trenton products feature thoughtful touches such as sliding doors on storage credenzas and built-in outlets, and incredibly sturdy construction. **Quick Ship inventory available.**

Trenton Collection:

Standing Desks (Starting at \$969)
L-desk: 60"W (left and right options)
Writing Desk: 60"W

Office Desks (Starting at \$749)
Double Pedestal desk: 64"W
Writing desk: 66"W

Bookcases, Filing and Storage (Starting at \$399)
Mobile files, lateral files, bookcases, hutches and credenzas available



(227833) 2-Drawer Lateral File ♣ \$3\$799



(228033) Adjustable-Height L-Desk w/ Right Return ♣ \$1,999



(228038) Writing Desk and Low Credenza w/ Storage Set ♣ \$2,739



(227829) Writing Desk ♣ \$749



(228035) Executive Desk ♣ \$999



● ● ● (226445) Rivet Mid-Back Task Chair ♣ \$349



Statesman

The Statesman Collection blends traditional craftsmanship with fine detailing to create a timeless workspace. Dark wood colors and old-world styling create an inviting elegance that lasts throughout the decades. Contemporary hardware in a brushed nickel finish beautifully complements the desk's crown molding and picture frame detailing. **Quick Ship inventory available.**



1. (227525) 8' Conference Table ⚡ \$1,699 2. (227113) 5-Shelf Bookcase w/ Doors ⚡ \$789 3. (227129) Storage Credenza ⚡ \$1,239 4. (228129) At Work High-Back Chair ⚡ \$349

Timeless and Traditional



1. (227516) Executive L-Desk w/ Right Return ⚡ \$2,429 2. (227115) 2-Drawer Lateral File ⚡ \$799 3. (227113) 5-Shelf Bookcase w/ Doors ⚡ \$789 4. (227112) 5-Shelf Bookcase ⚡ \$659 5. (223956) Pro-Line II™ Executive Chair - \$449



(226013) Charlesburg Polyurethane Executive Chair ⚡ \$389

Statesman Collection:

Standing Desks (Starting at \$1,499)
Writing desk: 60"W
L-desk: 65"W

Conference Tables (Starting at \$849)
Square: 48"
Rectangular: 8', 12', 16', 20'

Office Desks (Starting at \$1,449)
Executive desk: 68"W
Credenza desk available in 68"W

L-Desks (Starting at \$1,999)
With right return: 65"W and 69"W
With left return: 65"W and 69"W

Bookcases, Filing and Storage
(Starting at \$659)

Lateral files, bookcases, hutches and credenzas available

Executive and Ergonomic Chairs

Where comfort and design work together.



● ● ● ● ●
(223753) La-Z-Boy Sutherland
Manager's Chair ⚡ \$369



●
(50759) Montand Executive High-Back Chair ⚡
\$309



●
★ **(50453)** Ace High-Back Leather
Executive Chair ⚡ \$469



● ● ●
(224971) Zola High-Back Mesh Chair
with Removable Headrest ⚡ \$599



●
★ **(56848)** Pro-Line ProGrid® Ergonomic
High-Back Mesh Chair ⚡ \$269



● ● ●
(226289) Lira Ergonomic
Mesh-Back Task Chair ⚡ \$219



● ● ● ● ●
(226444) Rivet High-Back Task Chair ⚡
\$399



● ● ●
(226013) Charlesburg Polyurethane
Executive Chair ⚡ \$389



● ● ● ● ● ●
(223010) Harper High-Back
Executive Chair ⚡ \$359



●
★ **(220313)** Rand Ergonomic Mesh
Executive Chair with Headrest ⚡ \$379



● ● ●
(56985) Avanti Faux-Leather Executive
Chair with Flip Arms ⚡ \$489



● ● ● ● ●
(226011) Calpernia Faux-Leather Task Chair ⚡
\$299



Allure

Outfit an entire office with workspace, conference and reception pieces from the Allure Collection. A variety of desk configurations plus height-adjustable desk options are available. **Quick Ship inventory available.**



(225377) Executive L-Shaped Desk ⚡ \$899



(16540) Height-Adjustable Desk ⚡ \$1,699



(226388) 2-Drawer Mobile File Pedestal ⚡ \$299



Elegant & High-End

- 1. (16517) Executive Desk ⚡ \$549
- 2. (16518) Credenza Desk ⚡ \$449
- 3. (16519) Credenza-Supported Hutch ⚡ \$699
- 4. (221807) 5-Shelf Bookcase ⚡ \$499
- 5. (226444) Rivet High-Back Task Chair ⚡ \$399
- 6. (226446) Rivet Guest Chair ⚡ \$299



A combination of unexpected and inventive details gives Allure a stately-yet-modern appeal that can stand out in a variety of office environments.



(224211) Executive U-Desk ⚡ \$1,349



(16531) 12' Conference Table ⚡ \$999



Allure Collection:

Standing Desks (Starting at \$1,999)
 L-desk: 60"W, 66"W and 72"W

Office Desks (Starting at \$499)
 Available in 60"W, 66"W and 72"W

L-Desks (Starting at \$799)
 Available in 60"W, 66"W and 72"W

U-Desks (Starting at \$1,149)
 Available in 60"W, 66"W and 72"W

Reception Desks (Starting at \$1,129)
 Available with or without filing

Conference Tables (Starting at \$349)
 Square: 48"
 Rectangular: 8', 10' and 12'

Bookcases, Filing and Storage
 (Starting at \$279)
 Filing pedestals with or without casters, lateral files, storage cabinets, bookcases, credenzas and hutches

Edgy and Modular

District

Embrace edgy industrial design for your photo-ready office with the District Collection. Created for the private office or a bold work-from-home workspace, this series of desks, conference tables and office storage furniture embodies urban style with high-quality construction. **Quick Ship inventory available.**



- 1. (57654) Hutch \$649
- 2. (57649) U-Desk with Reversible Bridge \$1,599
- 3. (223010) Harper High-Back Executive Chair \$359
- 4. (223012) Harper Guest Chair \$299



1. (224632) 8' Conference Table \$849 2. (57694) Parker Mid-Back Executive Chair \$299 3. (57655) Storage Credenza \$999

District Collection:

Standing Desks (Starting at \$1,499)

Table desk: 60"W and 72"W
L-desk: 72"W

Office Desks (Starting at \$649)

Table desk: 60"W and 72"W
Credenza desk: 60"W and 72"W

L-Desks (Starting at \$1,149)

Right return options: 60"W and 72"W
Left return options: 60"W and 72"W

U-Desks (Starting at \$1,599)

Available in 60"W and 72"W

Reception Desks (Starting at \$1,299)

Available with or without integrated power

Conference Tables (Starting at \$799)

Available with or without integrated power options
in 6', 8', 10', 12', 14' and 16'

Bookcases, Filing and Storage (Starting at \$349)

Mobile filing pedestals, lateral files,
bookcases, storage cabinets, hutches
and credenzas available



(56622) Harper Mid-Back Executive Chair \$254



1. (223863) 10' Conference Table ⚡ \$929
2. (56622) Harper Mid-Back Executive Chair ⚡ \$299
3. (30777) 2-Drawer Lateral Storage File ⚡ 3 \$599
4. (14722) Bookcase Hutch ⚡ \$239
5. ★(80293) D.O.C Partitions Mobile Room Divider Whiteboard - \$1,199



1. (14656) Reversible Executive L-Desk ⚡ \$1,169
2. (224630) Hutch w/ Doors ⚡ \$409
3. (14721) Peninsula Desk ⚡ \$339
4. (57095) Vion High-Back Task Chair - \$639
5. (14722) Bookcase Hutch ⚡ \$239



Contemporary

Achieve a professional, cohesive look across multiple spaces while supporting a variety of workstyles with mix-and-match components from the Contemporary Collection.
Quick Ship inventory available.

1. (32751) 5-Shelf Bookcase ⚡ \$359 2. (32750) 3-Shelf Bookcase ⚡ \$249
3. (40852) Round Conference Table ⚡ \$259
4. (56622) Harper Mid-Back Executive Chair ⚡ \$299

Beautifully Crafted for Versatile Teams

Contemporary Collection:

Standing Desks (Starting at \$649)

Table desk: 48"W and 71"W
L-desk: 71"W (comes with mobile file pedestal)
L-desk w/adjustable return: 66"W
(comes with mobile file pedestal)

Office Desks (Starting at \$939)

Desk shell: 66"W, 71"W (straight and bowfront options)
Credenza desk: 71"W
Peninsula desk: 71"W

L-Desks (Starting at \$1,139)

Reversible return: 66"W and 71"W
(straight and bowfront options)
Left return: 71"W
Right return: 71"W

Reception Desks (Starting at \$1,039)

U-Desks (Starting at \$1,419)

Available in 71"W (bowfront option)

Conference Tables (Starting at \$179)

Round: 36", 42"
Square: 42"
Racetrack: 6', 8', 10'
Rectangular: 6', 10', 12'
High-top collaboration table: 8'

Bookcases, Filing and Storage (Starting at \$169)

Mobile file pedestals, lateral and combination files, bookcases, storage cabinets and hutches available

Modern Minimalism That Doesn't Skimp on Storage



Cortez

The Cortez Collection blends a modern design with traditional office storage needs. A go-to for reviving outdated office spaces, the Cortez Collection's clean lines and bold contrasts provide a minimalist and professional look. Its expansive selection of credenzas, hutches and filing cabinets maintain ample storage space. **Quick Ship inventory available.**

- 1.★(226905) 5-Shelf Bookcase ⚡ \$589
- 2.★(226940) Credenza Desk w/ Hutch ⚡ \$1,479
- 3.★(226898) 2-Drawer Mobile File Pedestal (2 shown) ⚡ \$489
- 4.★(226979) Bookcase w/ Lateral File ⚡ \$1,289
- 5.★(226892) Table Desk w/ Modesty Panel ⚡ \$719
- 6.(226011) Calpernia Task Chair ⚡ \$299



- 1.★(227372) Angled Reception Desk Add-on (2 shown) ⚡ \$1,889
- 2.★(226921) Straight Reception Desk Starter ⚡ \$1,429
- 3.★(226905) 5-Shelf Bookcase (2 shown) ⚡ \$589



- 1.★(226973) 10' Conference Table ⚡ \$1,899
- 2.★(226914) Storage Credenza ⚡ \$989
- 3.★(226979) Bookcase w/ Lateral File ⚡ \$1,289
- 4.★(226927) Tux Multifunctional Manager Chair ⚡ \$399

Cortez Collection:

Standing Desks (Starting at \$1,529)

L-desk w/ adjustable return: 60"W, 66"W, 72"W

Reception Desks (Starting at \$1,429)

Reception desk and add-on components available, including ADA-compliant option

Conference Tables (Starting at \$1,449)

Rectangular: 8', 10', 12' 14', 16'
Standing Height: 8', 10', 12', 14', 16'

Office Desks (Starting at \$529)

Credenza desk: 60"W, 66"W and 72"W (with or without hutch)
Table desk: 60"W, 66"W and 72"W (with modesty panel)

L-Desks (Starting at \$1,019)

Reversible return: 60"W, 66"W, 72"W

U-Desks (Starting at \$1,519)

Available in 60"W, 66"W and 72"W

Bookcases, Filing and Storage (Starting at \$489)

Mobile filing pedestals, lateral files, bookcases, hutches and credenzas



★(228056) 8' Conference Table w/ Storage Credenza - \$5,799



★(228051) U-Desk w/ Right Bridge - \$9,399



★(228058) Height-Adjustable L-Desk w/ Right Return Suite - \$12,999



★(228054) Storage Wall Set - \$9,299

Heritage-Quality Elegance

Liberty

Distinguish your workplace with the traditionally styled Liberty Collection. Featuring hardwood and veneer construction with nickel heritage pulls, this collection adds formality to private offices, conference rooms and reception areas.

Liberty Collection:

Standing Desks (Starting at \$799)

L-desk: 72"W (with adjustable left or right return options)

Office Desks (Starting at \$2,999)

Executive desk: 72"W
Credenza desk: 72"W

L-Desks (Starting at \$4,849)

Right return: 72"W
Left return: 72"W

U-Desks (Starting at \$9,399)

Available in 72"W with hutch (left or right bridge options)

Conference Tables (Starting at \$2,699)

Round: 48"
Rectangular: 8'

Bookcases, Filing and Storage

(Starting at \$1,399)
Lateral file, bookcases, hutches and wardrobes

Reception Desks (Starting at \$6,999)

Different filing options



(223753) La-Z-Boy Sutherland Manager's Chair \$369



(224171) Ultra Big and Tall Executive Chair \$739



The Ultimate Work Well Solution

1. ★(228290) Height-Adjustable Conference Table - \$4,999 2. ★(228275) Storage Cabinet (2 Shown) - \$769 3. ★(228277) Bookcase with Lateral File (2 Shown) - \$1,699



Includes higher quality laminate and powder-coated steel for increased durability

1. ★(228307) Height-Adjustable L-Desk - \$4,249 2. ★(228275) Storage Cabinet (2 shown) - \$769 3. ★(228277) Bookcase with Lateral File (2 shown) - \$1,699



Vanguard

With adjustable-height conference tables and desking options, the Vanguard Collection lets teams work how they feel best. Featuring a sleek, two-tone design and high-quality materials, this collection is built to withstand.

Vanguard Collection:

Office Desks (Starting at \$839)

Desk shell: 60"W, 72"W (bowfront option)

Standing Height Desks (Starting at \$2,529)

Desk shell: 60"W, 66"W and 72"W
L-desk: 60"W, 66"W and 72"W
(left and right return options)

U-Desks (Starting at \$1,849)

60"W, 66"W and 72"W

Conference Tables (Starting at \$1,449)

Standing Height: 6', 8', 10', 12', 14', 16'
Sitting Height: 6', 8', 10', 12', 14', 16'

L-Desks (Starting at \$1,229)

Available in 72"W (66"D or 72"D options)

Reception Desks (Starting at \$1,289)

Standing Height: 60"W, 66"W, and 72"W
Sitting Height: 60"W, 66"W, and 72"W
L-desk: 60"W, 66"W and 72"W
reversible, left or right return options)

Bookcases, Filing and Storage (Starting at \$379)

Mobile file pedestals, lateral files, bookcases, storage cabinets and hutches



(56638) Highland Two-Tone Leather Executive Chair ⚡\$399



1. ★(228327) Reception Desk - \$1,329 2. ★(228274) 2-Drawer Lateral File - \$1,129 3. ★(228276) Bookcase with Lower Doors (2 shown) - \$1,329



Holloway

The Holloway Collection offers a modern, modular approach to office furniture, combining sleek marble-look accents with woodgrain laminate finishes. Designed for versatility, it seamlessly adapts to reception areas, private offices and collaborative spaces.

Holloway Collection:

Office Desks (Starting at \$399)

Table desks: 60"W and 71"W

L-Desks (Starting at \$599)

Available in 60"W and 71"W

Reception Desks (Starting at \$699)

Available in 47"W and 63"W, add-on components available, including ADA-compliant option

Conference Tables (Starting at \$349)

Round: 48"Dia
Rectangular: 6'
High-top collaboration table: 6'

Bookcases, Filing and Storage (Starting at \$269)

Mobile filing, lateral file, bookcase and storage cabinets available

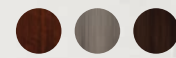


(228245) Reception L-Desk w/ ADA Counter and Mobile Pedestal
\$1,719



(228230) L-Desk w/ Mobile Pedestal
\$899





Affirm

Enjoy a vast variety of modular options that let you create the exact office you need with the Affirm Collection. A long-time go-to for small and mid-sized businesses, this collection delivers high value and high durability.

★(226414) L-Desk w/
Reception Hutch - \$949



Affirm Collection:

Office Desks (Starting at \$299)

Desk shell: 60"W, 72"W (bowfront and straight options)

L-Desks (Starting at \$549)

Available in 72"W (66"D or 72"D options)

Reception Desks (Starting at \$949)

Bookcases, Filing and Storage
(Starting at \$199)

Mobile file pedestals, lateral files, bookcases,
storage cabinets and hutches

Flexible Private Office Favorites for Small and Mid-Sized Businesses



1. ★(226389) 2-Drawer Lateral File ⚡ \$599 2. ★(226393) Desk Shell - \$349 3. ★(226391) 2-Drawer Mobile Pedestals (2 Shown) ⚡ \$469



★(226418) Desk w/ Hutch - \$799



● ● ● (57506) Sleek Chair ⚡ \$379

Hardworking Essentials



(16603) Reception Desk - \$2,129



(228385) 42" Round Conference Table - \$849



(228379) Combo File  \$999



(16597) 60" L-Desk - \$2,159



1. (228386) Conference Table - \$1,139 2. (228384) 6 Shelf Bookcase - \$899 3. (228378) Lateral File Credenza - \$1,449 4. (22643) Executive Linen High-Back Chair  \$209



Parley

Outfit your private offices and collaboration and reception spaces with the Parley Collection. Featuring classic, no-frills desking options, including L-desks and U-desks plus storage essentials, this collection will work hard for your team.

Parley Collection:

Office Desks (Starting at \$519)
Available in 60"W and 72"W (24"D and 30" options)

L-Desks (Starting at \$2,159)
Available in 60"W and 72"W

Conference Tables (Starting at \$849)
Round: 42"
Rectangular: 6', 8' and 10'

Reception Desks (Starting at \$949)
Straight and L-Desk Reception options available

U-Desks (Starting at \$2,639)
Available with or without hutch available

Bookcases, Filing and Storage (Starting at \$599)
Mobile filing, lateral file, bookcase, storage cabinets, hutch and credenza available



1. (228371) Reception Desk - \$949 2. (228382) 4-Door Storage Credenza - \$1,249 3. (228384) 6 Shelf Bookcase - \$899 4. (227403) Link Task Chair with Adjustable Headrest  \$179



Via

Bold color combinations and mix-and-match components make the Via Collection an optimal choice for dynamic teams that want to make a statement. It features a range of desking and storage options to create spaces that work the way you do. **Quick Ship inventory available.**



Shown in an NBF Exclusive Finish

Make a Statement with Bold Color Combos

1. ★ (14761) Executive Bowfront U-Desk w/ Hutch ♣ \$2,329 2. ★ (57328) Amp Mesh-Back Ergonomic Chair ♣ \$289 3. ★ (30895) 2-Drawer Lateral File ♣ \$549



Shown in an NBF Exclusive Finish

1. ★ (14764) Bowfront Double Pedestal Desk ♣ \$999
2. ★ (30896) 2-Drawer Lateral File w/ Hutch ♣ \$929
3. ★ (32945) 5-Shelf Bookcase ♣ \$349
4. (57506) Sleek Mesh-Back Chair ♣ \$379

Via Collection:

Standing Desks (Starting at \$499)

Available in 48"W
L-Desk: 60"W

L-Desks (Starting at \$989)

Available in 60"W (with or without hutch)
and 72"W (with bowfront)

Reception Desks (Starting at \$989)

Reception desk and L-desk reception desk available

Office Desks (Starting at \$399)

Bowfront desk: 72"W (with or without lockable filing)
Credenza desk: 60"W (with or without lockable filing)

U-Desks (Starting at \$1,599)

Available in 60"W and 72"W
(both with or without hutch)

Bookcases, Filing and Storage (Starting at \$249)

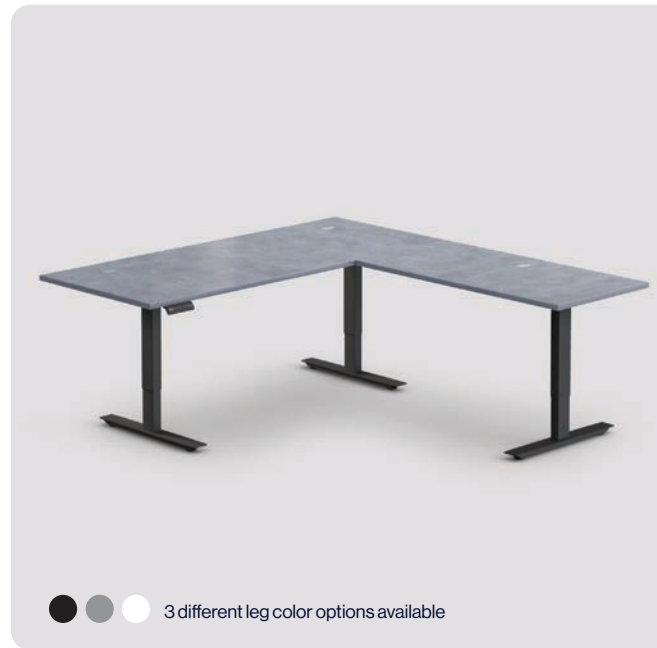
Mobile file pedestals, lateral files, bookcases and hutches available



(50950) Austen High-Back Bonded-Leather Managers Chair ♣ \$209

Blend High Functionality and Sleek Design

1. (226452) Height-Adjustable Desk ⚡ \$649
2. (226454) Height-Adjustable L-Desk ⚡ \$949
3. (226169) 2-Drawer Mobile File Pedestal ⚡ \$179
4. (57673) Urban Mobile Divider ⚡ \$1,149
5. (56966) Hydra Mesh Back Computer Chair ⚡ \$179



(226455) Height-Adjustable L-Desk ⚡ \$999



(226451) Adjustable-Height Desk ⚡ \$599



(226169) 2-Drawer Mobile File Pedestal ⚡ \$179



(50765) Hydra Mesh Stacking Guest Chair with Steel Frame And Waterfall Seat ⚡ \$99



Upward

Upward adjustable-height desk and coordinating storage collection. With a quiet, dual-motor system and 4 programmable memory settings, Upward desks transition effortlessly to your preferred heights. Additional sizes available online. **Quick Ship inventory available.**

Select from 5 different laminate finishes and 3 leg color options to create your ideal workstation.

Task and Guest Chairs

For solo or collaborative work.



●
★(52348) Europa High-Back
Conference Chair ⚡ \$339



● ●
(50950) Austen High-Back Bonded-Leather
Managers Chair ⚡ \$209



●
(222643) Executive Linen High-Back Chair ⚡
\$209



●
(50967) Stellar Faux-Leather Mid-Back Chair ⚡
\$259



●
(226929) Link Guest Chair ⚡
\$159



● ● ● ●
(223012) Harper Guest Chair ⚡
\$299



● ● ● ●
(57694) Parker Mid-Back Executive Chair ⚡
\$299



● ● ●
(226445) Rivet Mid-Back Task Chair ⚡
\$349



●
(50611) Work Smart Bonded Leather
Executive Chair ⚡ \$279



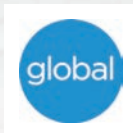
●
(57494) Highland Leather Mid-Back Chair ⚡
\$379



● ● ●
(57685) Sleek Guest Chair ⚡
\$299



● ● ●
(226446) Rivet Guest Chair ⚡
\$299



Compile

Scaling up fast is a breeze with Compile QuickShip Custom Cubicles. Build your custom office cubicle solutions to your team's specific needs and have it shipped in 10 days.



System 2

A sturdy monolithic panel system, with easy installation and practical functionality. The classic design featuring our honeycomb core construction provides the durability and flexibility to meet the needs of any office environment.

Versatile workstations help employees make the most of their in-office time.

They can serve both the need for focused work and informal collaboration. Whether you're looking for a quick-turn solution or our expert space planning and design team to provide a custom cubicle design for your space, we're here to help.



Accelerate

Accelerate by HON—a versatile panel solution designed to grow with your business—is simple yet adaptable, making it ideal for think-outside-the-box spaces.





Office in an Hour

Scaling up is a breeze with these freestanding panel-based workstations that are designed to be assembled in 60 minutes or less. Made of sturdy wood and durable melamine, they are ready to withstand commercial use.
Quick Ship inventory available.

(227668) L-Shaped Workstation w/
Storage (6 shown) ⚡ \$2,429



Corben

The Corben Collection simplifies workstation design with pre-configured sets that feature L-shaped desks, ample storage and 67"H divider panels in a number of configurations.

★(14984) 4-Person Workstation - \$9,409



Easy Office

Designed for quick and easy assembly with minimal parts, the Easy Office Collection offers flexible options for open office environments. Its sturdy components allow you to create workstations that work best for your team.
Quick Ship inventory available.

(225671) L-Shaped Workstation w/
Pedestal (6 shown) ⚡ \$1,799

When you work with NBF, you're choosing a partner that's experienced in fueling impactful workplaces.

Some other perks you'll get by working with NBF include:

Space planning and design services

At NBF, we offer office space planning and design services. Whether over the phone or in person, our team of design professionals collaborates with you to create an office that meets your needs and budget.

Vast product selection

We're proud to offer a variety of cubicle and workstation solutions you can choose from to make the most of your space. We work with vendors such as Global, HON, Group LaCasse and Friant to provide custom cubicle solutions.

Expert support

Our team of pros is here to help you select, build and order a custom cubicle solution that will help fuel achievement.

Support Body Diversity

Big and tall chairs provide support for a wider range of body types. Most big and tall chairs feature a weight capacity exceeding 300 lbs.



●
(51480) Omega 24/7 Big & Tall Stool with Flip Arms ⚡
\$409



●
★(57021) Overtime Big and Tall 24/7 Mesh-Back Chair with Polyurethane Seat ⚡ \$379



●
★(56097) Everest 24-Hour Big and Tall High-Back Leather Chair ⚡
\$449



●
★(56053) Everlast Big and Tall 24-7 Chair ⚡
\$459



Perspective

With ergonomic functionality and polished aesthetics, the Perspective Collection is the perfect addition to any office. Designed with mesh backs and memory foam seats, these chairs provide breathable and supportive all-day comfort.



★(56046) Perspective Ergonomic Mesh High-Back Chair ⚡ \$339



★(51039) Perspective Mesh-Back Guest Chair ⚡ \$199



★(56045) Perspective Mesh-Back Stool ⚡ \$319



★(56044) Perspective All Mesh Chair ⚡ \$319

Mesh Task Chairs

Breathable comfort while you work.



●
(226928) Link Task Chair ⚡
\$169



● ● ●
(57506) Sleek Mesh-Back Chair ⚡
\$379



● ●
★**(226927)** Tux Multifunctional Manager Chair ⚡
\$399



● ● ●
(56507) Ergohuman High-Back Mesh Chair ⚡
\$799



●
★**(50646)** Apollo Mesh-Back Chair ⚡
\$349



●
(56399) Network Mesh-Back
Faux-Leather Task Chair ⚡ \$229



●
★**(57328)** Amp Soft-Touch Mesh-Back
Ergonomic Chair ⚡ \$289



● ●
(225013) Ensley High-Back Chair ⚡
\$299



●
(56947) Essential Mesh Back Chair w/Flip Arms
and Memory Foam Seat ⚡ \$289



● ●
(223944) Bailey Ergonomic Mesh Task Chair ⚡
\$289



● ●
★**(56043)** Perspective Ergonomic Mesh
Mid-Back Chair ⚡ \$299



●
★**(56946)** Linear Mesh Chair
w/Flip Arms ⚡ \$459

Intertwine Comfort and Deep Focus Space

Nook

Extend your space's functionality with these acoustically treated, multi-purpose mobile privacy pods that are perfect for both collaboration and individual privacy.



(225622) Personal Privacy Booth - \$7,219



(225618) Huddle Pod - \$9,299

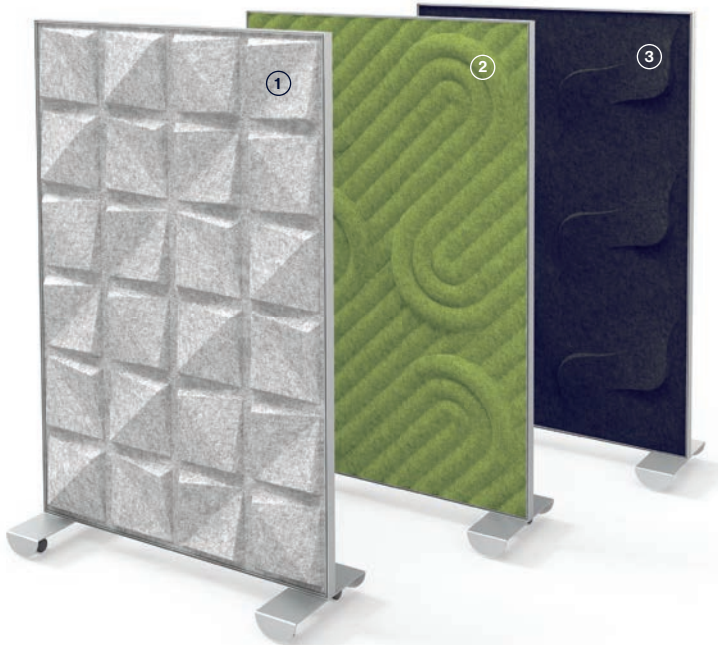


+ more

Shift

Seamlessly adapt and transform your flexible working areas with these creative and customizable three-dimensional acoustic panels. Available in many patterns and sizes and proudly crafted in the USA.

1. (226002) Quad Mobile Room Divider - \$1,749
2. (226001) Deco Mobile Room Divider - \$1,749
3. (226000) Twist Mobile Room Divider - \$1,749



1. (76541) Ottoman ✦ \$249
2. (76538) Armless Guest Chair ✦ \$399
3. (76540) Corner Chair ✦ \$419
4. (76539) Guest Chair ✦ \$549



Traffic

The Traffic Collection offers multiple seating options, including power-enabled privacy chairs and other modular components to craft solo or group seating areas. **Quick Ship inventory available.**



- (76884) Modular Seating Lounge Privacy Chair w/ USB Outlet (2 shown) ✦ \$729

Comfortable Gathering Places



+ more

Social

One of our most versatile reception and lounge seating collections, the Social lines feature sectional components to create straight, curved or serpentine seating components.

1. 1 (227965) 3-Seater w/ Center Arms in Premium Upholstery \$3,179

2. 1 (227979) Small Rectangular Table in Premium Upholstery 3 \$569

3. 1 (227971) Guest Chair in Premium Upholstery - \$1,159

4. 1 (227968) Armless Loveseat in Premium Upholstery (3 shown) - \$1,469

5. 1 (227986) 30-Degree Wedge Table in Premium Upholstery (2 shown) 3 \$759

6. 1 (227978) Loveseat in Premium Upholstery - \$1,819

7. 1 (227960) 1-Seat Bench in Premium Upholstery 3 \$569



+ more

Mingle

Creating clean and modern conversational groupings is a breeze with the Mingle Collection. Its soft seating and sleek laminate table options are perfect for team touchdown spaces as well as lounges or libraries.

1. ★ (227776) Round Laminate End Table 16"H 3 \$439

2. ★ (227777) Round Laminate End Table 20"H 3 \$489

3. ★ (227768) Guest Chair in Premium Upholstery - \$829

4. ★ (227769) Guest Chair in Standard Upholstery - \$709

5. ★ (227772) Loveseat in Premium Upholstery - \$1,249



★ (227985) Square Table in Standard Upholstery - \$719



★ (225260) Armless Guest Chair in Standard Upholstery - \$739



★ (227988) 45-Degree Wedge Table in Premium Upholstery - \$839



★ (225269) 2-Seater with Center Arm in Standard Upholstery - \$1,869



★ (227962) 2-Seat Bench in Premium Upholstery - \$879



1. ★ (227768) Guest Chair in Premium Upholstery - \$829

2. ★ (227769) Guest Chair in Standard Upholstery - \$709

3. ★ (227772) Loveseat in Premium Upholstery - \$1,249

4. ★ (227776) Round Laminate End Table 16"H 3 \$439

5. ★ (227777) Round Laminate End Table 20"H 3 \$489

6. ★ (227778) Square Laminate Table 16"H - \$469

7. ★ (227771) Bariatric Chair in Standard Upholstery - \$1,149



Conversational Groupings

- 1. ★(54977) Sofa in Faux Leather - \$2,689
- 2. ★(54972) Oversized Guest Chair in Faux Leather (2 Shown) - \$1,269
- 3. ★(54974) 2-Seat Bench in Faux Leather - \$999
- 4. (53603) End Table (2 Shown) - \$439

● ● ● ● ● + more

Parkside

Invite clients to wait in comfort with this traditional reception collection, perfect for office reception areas. Parkside pieces are perfect for creating conversational groupings and feature sectional components in addition to stand-alone options.



★(53618) Guest Chair in Designer Upholstery - \$1,119



- 1. (76535) 3-Seat Sofa w/ Power ⚡\$1,099
- 2. (76522) Oversized Guest Chair w/ Arms ⚡\$519
- 3. (76523) 2-Seat Bench ⚡\$339
- 4. ★(76911) New Castle Steel End Table w/Laminate Top - \$279

● ● ● ●

Compass

Options for tons of configurations—including stand-alone or fully upholstered with integrated power. Modular/sectional components. **Quick Ship inventory available.**



(76517) Guest Chair with Arms ⚡\$329

Quintessential Contemporary



1. ★(53031) Lounge Chair - \$529 2. 1(53035) Sofa - \$1,069 3. ★(53033) Loveseat - \$699
4. (225199) Brooklyn Glass Coffee Table - \$279



Atlantic

Sofa, loveseat and club chairs with straight, contemporary lines make the Atlantic Collection a go-to soft seating option for a range of spaces. Durable fabrics make these pieces a strong choice for high-traffic settings.



★(53031) Lounge Chair
\$529



★(53033) Loveseat
\$699



Wall Street

From 2-seater options to L-couch arrangements; create sectional seating that fits your space best with the Wall Street Collection. The line now includes a Charging Center Console for added convenience and endless configurations.

1. (75193) Guest Chair - \$529
2. (75352) Left Arm Guest Chair - \$469
3. (75194) Armless Guest Chair - \$379
4. (75196) Coffee Table - \$269
5. (75197) Corner Chair - \$499
6. (76549) Charging Center Console - \$209
7. (75351) Right Arm Guest Chair - \$469
8. (75195) End Table - \$169



((75199)) Loveseat
\$899



((75193)) Modern Guest Chair
\$529



((76549)) Charging Center Console
\$209

- ★ (53986) Guest Chair - \$809
- ★ (53981) Reception Coffee Table - \$419
- ★ (226914) Cortez Storage Credenza - \$1,199
- ★ (53982) Loveseat - \$1,179
- ★ (53979) End Table - \$319

+ more

Belmont

The Belmont Collection elevates traditionally styled reception seating with sleek wood details on armrests. The collection features standard and bariatric seating options and 3-seat options, all designed for high-traffic areas.

- (76915) 3-Seat Lounge Sofa - \$999
- (223463) Coffee Table - \$199
- (76913) Lounge Chair - \$499
- (223468) Pull Up Table - \$139
- (224966) Tambor Fabric Ottoman - \$309
- (225934) Signature Accent Furniture Saur Wood Stool - \$369

Rivet

Experience classic industrial design with modern details with the Rivet Collection. These pieces capture the essence of industrial charm while boasting modern resilience. **Quick Ship inventory available.**

Rugged Elegance with Enduring Style



★(53974) 3-Seater with Center Arms - \$1,949



★(53982) Loveseat - \$1,179



(76914) Loveseat - \$699



(223462) End Table - \$129



(226447) Bench - \$249

Outdoor Options to Gather or Focus



Eveleen

From outdoor spaces for collaboration or to focus and recharge, the expansive Eveleen Collection has options suited for a number of workday uses. Made with easy-to-wash high-pressure laminate table tops, durable synthetics and aluminum frames, the Eveleen collection is durable enough to stand up to high-traffic outdoor environments.

- 1. (222273) Outdoor Bar-Height Bistro Table - \$839
- 2. (222270) Outdoor Barstool with Arms ☞ \$469
- 3. (222268) Rectangular Outdoor Patio Table - \$999
- 4. (222271) Outdoor Bench ☞ \$579
- 5. (222269) Cafe Chair with Arms - \$329



(222277) Outdoor Bistro Table with 2 Chairs - \$1,499



(222282) 4-Seat Outdoor Patio Table Set - \$2,099



(222281) 6-Seat Outdoor Patio Table Set - \$2,999

Café Options to Collaborate or Refresh



1. ★(51705) Armless Stack Chair w/ Polypropylene Seat ⚡ \$189
2. ★(44437) Café-Height 42" Square Table ⚡ \$489



Figo

Create an inviting area for guests, clients or employees to gather with the Figo Collection. Modern and practical, these items work well in collaborative spaces, with seating options and tables that can accommodate a range of guest needs.

Quick Ship inventory available.



1. ★(44443) Stool w/ Polypropylene Seat ⚡ \$279
2. ★(225098) Bar-Height 36" Round Bistro Table - \$499



Barista

The Barista Collection is designed to elevate breakrooms with cool and contemporary seating and table options in a variety of colors. Items also feature easy-to-clean and durable surfaces.

1. ★(44682) Armless Café Chair ⚡ \$199
2. ★(41802) 30" Round Standard-Height Table - \$359
3. ★(44727) Bar-Height Table and Stool Set - \$1,499



Café au Lait

Available with fabric or vinyl seat options and a number of color combinations, the Café au Lait Collection is designed to create warm and inviting breakrooms. Featuring sturdy steel construction on the chairs and cast iron bases and high-pressure laminate tops on the tables, this collection is ready to hold up to high-traffic areas.



1. ★(44599) Oversized Chair ⚡ \$329
2. ★(44601) Round Standard-Height Table - \$359
3. ★(44608) Round Bar-Height Table w/ 2 Oversized Stools - \$1,089

- 1. (41512) FLEX Rectangular Training Table - \$989
- 2. (226372) Nestor Nesting Chair ⚡ \$239
- 3. (36806) At Work Storage Credenza ⚡ \$799
- 4. ★(220287) Olympus Adjustable-Height Lectern ⚡ \$399



Flexibility to Engage



Flex
Facilitate conversations and connection with this flip-top training table line that features transition and pie-shaped components to gang tables together in different shapes, from circles to hexagons to v-shapes and more.



(41515) Trapezoid Training Table - \$969



(41516) Crescent Training Table - \$959



(41517) Transition Training Table - \$959

Stackorz



(226373) Stackorz Armless Stacking Chair ⚡ \$79



*Built-in Ganging Leg on Stackorz Chairs



(226372) Nestor Nesting Chair ⚡ \$239



★(51038) Perspective Mesh-Back Nesting Chair ⚡ \$229



(221569) Lotus Nesting Chair with Arms ⚡ \$299



★(51326) Pro-Line II® Deluxe Nesting Mesh Folding Chair - \$289

Exceptional Executive Style

Pont Lafayette

Outfit a timeless workspace with the Pont Lafayette Collection, designed to exude sophistication and elegance. It features crown molding and picture frame detailing and includes pieces to outfit private offices and conference rooms. **Quick Ship inventory available.**

- 1. (227390) U-Desk w/ Right Return ⚡📦 \$3,479
- 2. (227100) Lighted Hutch 📦 \$1,499

Hardwood and veneer construction

Big & Tall and 24/7

Experience all-day comfort.



●●
(226012) Zander Big & Tall Executive Chair ⚡
\$379



●
★(56107) Everest 24-Hour Big & Tall Mid-Back Leather Chair ⚡\$439



●
(50040) Octave Big and Tall High-Back Chair w/Memory Foam Seat ⚡\$609



●
(51479) Omega 24/7 Big and Tall Chair with Flip Arms ● \$379



●
★(57020) Overtime 24/7 Big and Tall Mesh-Back Chair ⚡\$369



●
(56066) Linear Big and Tall Bonded-Leather Seat/Mesh-Back Chair with Flip Arms ⚡\$449

Distinctive Styling



Metropolitan

The Metropolitan Collection's striking silver detailing gives it a distinctive appeal. The collection features desking, tables and storage options for private offices and conference rooms, all made with durable laminate surfaces. **Quick Ship inventory available.**

- 1. (227618) Storage Cabinet w/ Lateral File ⚡ \$1,499
- 2. (227038) 2-Drawer Lateral File ⚡ \$719
- 3. (227040) Compact Computer Desk ⚡ \$539
- 4. ★(76076) Mason Street Guest Chair in Standard Upholstery - \$429
- 5. (225013) Ensley High-Back Chair ⚡ \$299



Made in the USA go-to for a sophisticated private office

Office 500

This high-quality office furniture line elevates standard desks and storage options with architectural hardware and design elements. **Quick Ship inventory available.**

- 1. (227953) Executive U-Desk w/ File Hutch ⚡ \$3,119
- 2. (227941) 5-Shelf Bookcase w/ Doors ⚡ \$569



(225013) Ensley High-Back Chair ⚡ \$299



★(76091) Mason Street Steel Armless Guest Chair In Standard Upholstery - \$429



★(16367) Complete Office Set ⚡
\$1,969



★(58152) Bowfront Reversible U-Desk with Hutch
\$2,649

Smooth surfaces and powder-coated steel bases



★(11038) Single Pedestal Desk with Center Drawer ⚡
\$849



1. ★(220269) 5-Drawer Lateral File ⚡🔌 \$1,199
2. ★(220264) 3-Drawer Lateral File ⚡🔌 \$749



Carbon/Ogden

Outfit office and filing spaces with collections built to withstand. The Carbon and Ogden Collections combine modern style with utilitarian design. **Quick Ship inventory available.**

Sturdy Steel Options for Hardworking Teams

1. ★(86540) Reversible L-Desk ⚡ \$1,299 2. ★(225616) Hutch w/ Tack Board ⚡ \$589
3. ★(223494) Lateral File ⚡🔌 \$699 4. ★(50453) Ace High-Back Leather Executive Chair ⚡ \$469
5. ★(50455) Ace Mid-Back Leather Guest Chair ⚡ \$359



Ensemble

The Ensemble Collection is characterized by a serene, flowing design. Each piece offers sturdy construction and versatile upholstery options. Chairs feature heavy-duty steel frames, generous clean-outs, wall-saver designs and high arms for easy egress.



- 1. ★ (227216) Guest Chair in Standard Upholstery - \$369
- 2. ★ (227232) Coffee Table - \$409
- 3. ★ (227222) Bariatric Chair in Standard Upholstery - \$529
- 4. ★ (227225) Loveseat in Standard Upholstery - \$619
- 5. ★ (227233) Personal Table - \$369
- 6. ★ (227228) 2-Seat Bench in Standard Upholstery - \$519

Serene Settings

Choose from solid or patterned fabrics, vinyls or combinations.
Also available in Healthcare options.



★(227218) Oversize Guest Chair in Premium Upholstery
\$469



★(227233) Personal Table
\$369



★(227213) End Table
\$299



★(227224) Loveseat in Premium Upholstery
\$719



★(227227) 2-Seat Bench in Premium Upholstery
\$579

Impressing Visitors with Style and Comfort



1. ★(55646) Guest Chair in Premium Upholstery (2 shown) - \$379 2. (76671) End Table (2 shown) - \$249 3. ★(55650) Loveseat in Premium Upholstery - \$669
4. (76669) Coffee Table - \$339 5. ★(55652) Bariatric Guest Chair in Premium Upholstery - \$559

Choose from standard or premium upholstery
options to coordinate your reception areas



Symphony

The Symphony Collection brings a sleek, modern look to elevate your reception area. These pieces provide comfortable accommodation and durability that you can trust.



★(55647) Oversize Guest Chair
in Standard Upholstery - \$339



★(55651) Bariatric Guest Chair
in Standard Upholstery - \$459



★(55649) Loveseat in Standard Upholstery
\$529



(76669) Coffee Table
\$339



(76671) End Table
\$249

High-Design Guest Seating with Bariatric Options



Willow

Create an inviting and comfortable seating area with the Willow Collection. With a plethora of upholstery choices, this collection provides a versatile canvas to complement any color palette.

- 1. ★(58227) Designer Guest Chair (2 Shown) - \$779
- 2. ★(58231) Designer Armless Guest Chair (2 Shown) - \$549
- 3. ★(58225) Personal Table - \$339
- 4. ★(58246) Designer Armless Sofa (2 Shown) - \$1,389
- 5. ★(58238) Conversational Table - \$439
- 6. ★(58235) Designer Loveseat - \$1,169



★(58220) 2-Seat Bench - \$559



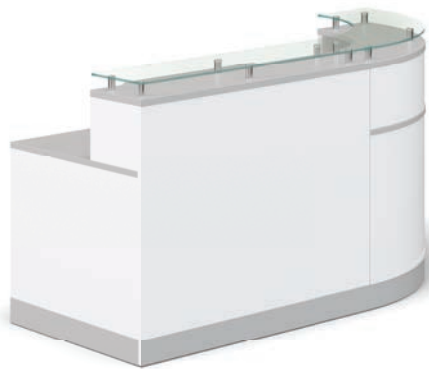
★(58243) Sofa - \$1,409



★(58239) Bariatric Guest Chair - \$819

Sophisticated, Modular and Durable

Find the exact setup required for your needs.



(10327) Reception Desk with ADA Return ⚡ \$1,999



(10349) U-Shaped Reception Desk with ADA Return ⚡ \$4,149



(10329) U-Shaped Reception Desk ⚡ \$4,279



Esquire

The Esquire Collection pushes the boundaries of modern style. Metal accents and supports create a modernist appeal, ensuring that the top remains firmly in place. Esquire's curved lines, minimalistic surfaces and neutral colors provide comfort and bring adaptability to contemporary office furniture solutions.

Quick Ship inventory available.

- 1. (10348) Arc-Shaped Reception Desk ⚡ \$2,679
- 2. (30101) 2-Drawer Lateral File (2 Shown) ⚡ \$519
- 3. (32178) 3-Shelf Bookcase (2 Shown) ⚡ \$459
- 4. (226289) Lira Ergonomic Task Chair w/ Headrest ⚡ \$219



1. ★(75809) Wood Armless Guest Chair in Premium Upholstery - \$559
2. ★(75805) Wood Guest Chair in Premium Upholstery - \$559
3. ★(75806) Wood 3-Seat Sofa in Premium Upholstery - \$1,639
4. (75443) Wood Coffee Table - \$419

+ more

Mason Street

Welcome guests with the contemporary elegance of the Mason Street Collection, available in steel and wood. These pieces are created specifically for high-traffic areas with durable, cleanable materials and wall-saver designs.

Contemporary Elegance That Stands the Test of Time



1. ★(76894) Steel Guest Chair in Designer Upholstery - \$389
2. ★(76896) Steel Armless Guest Chair in Designer Upholstery - \$389
3. ★(226696) Steel 4-Seater w/Center Arms in Designer Upholstery - \$1,469
4. ★(76911) Steel End Table - \$279
5. ★(226692) Steel Bariatric Chair in Designer Upholstery - \$789
6. ★(76906) Steel 2-Seater w/Center Arm in Designer Upholstery - \$749
7. ★(76912) Steel Coffee Table - \$379

+ more

New Castle

The New Castle Collection brings an ideal balance of style, function and value to the modern workplace. Upgrade your reception area with this contemporary and durable collection made with resilient steel or solid maple wood.



1. ★(76098) Steel 2-Seat Sofa in Premium Upholstery - \$909
2. ★(76138) Steel 2-Seat Bench in Premium Upholstery - \$509
3. ★(76088) Steel Bariatric Chair in Premium Upholstery - \$779
4. ★(75828) Steel Coffee Table - \$369
5. ★(75827) Steel End Table - \$279
6. ★(76078) Steel Guest Chair in Premium Upholstery (2 Shown) - \$479



1. ★(53680) Wood 2-Seater w/Center Arm in Designer Upholstery - \$719
2. ★(226711) Wood End Table - \$279
3. ★(53681) Wood 3-Seater in Designer Upholstery - \$1,059
4. ★(226713) Wood Coffee Table - \$379
5. ★(53676) Wood Guest Chair in Designer Upholstery - \$369
6. ★(53675) Wood Armless Guest Chair in Designer Upholstery - \$369



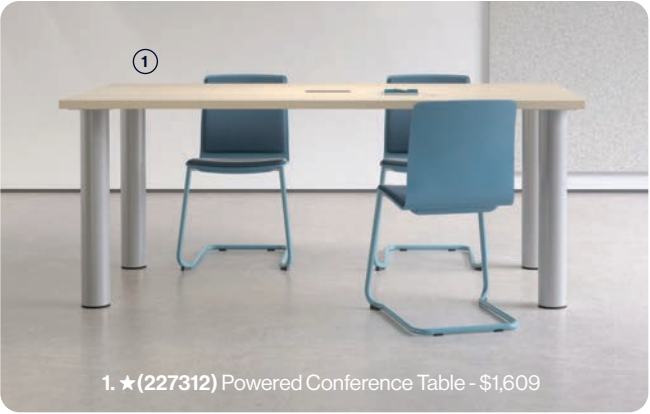
Modern Tables for Large Group Meetings

1. ★ (227307) Conference Table - \$2,539



Bella

The Bella Collection includes tables that range from 6' to 24' long. Its smartly engineered design includes features that protect the floor and enhance stability. Tabletops are a woodgrain laminate with matching edge.



1. ★ (227312) Powered Conference Table - \$1,609



1. 1 (227273) Conference Table - \$1,469
2. 1 (227470) Task Chair - Upholstered - \$439



1. 1 (227272) Conference Table - \$1,099
2. 1 (227470) Task Chair - Upholstered - \$439



Voyage

The boldly colored seating and multifunctional table options from the Voyage Collection are perfect for creating engaging conference and training spaces. Many Voyage Collection pieces feature casters to easily roll furniture into new configurations.



★ (227466) Multipurpose Chair
\$439



★ (227467) Extended-Height Task Chair
\$439

Get Video Conference Ready



1. (227345) Boat-Shaped Powered Conference Table w/ Knife Edge - \$2,999



1. (227320) Rectangular Conference Table w/ 3MM Edge - \$1,619



1. (227344) Rectangular Powered Conference Table w/3MM Edge - \$2,499



Plateaux

Featuring rectangular and boat-shaped options with or without integrated power, the Plateaux Collection is a go-to for teams that need versatile functionality. Opt for knife edge options for a sharp, clean, polished and high-end look.



Odyssey

A perfect addition to your modern and sophisticated conference or collaboration space, the Odyssey table features a number of table top and base color combinations. Opt for square, round or rectangular tables in café, bar, counter or standard heights.



(227240) Round Café Height Table
\$1,419



(227249) Square Standard-Height Table
\$1,279

Power Accessories

Charge your work devices with an array of products available at NBF.com



(223970) Power Source Charging Station Grommet ⚡ \$289



(224341) PowerUp Wireless Charging Power Station \$59



(92553) Power Source Round Grommet ⚡ \$39



(224340) PowerUp Wireless Charging Station Power Cube with USB \$59



(43396) Mobile Charging 18-Slot Tablet Storage Cart \$799



(30645) Tech Tub2 6-Tablet Charging and Storage Tub with Trolley \$339



★(60039) iTeach Mobile Power Tower Charging Station ⚡ \$549

digitize your WELCOME



10% OFF*
ORDERS OF \$300+
USE COUPON CODE: D2GWEL10

Electrify your reception area with a range of digital solutions from Displays2Go. Seamlessly integrate content across our kiosks and displays to ensure up-to-date, consistent messaging for guests and employees alike.



Learn more at displays2go.com/welcome

877-748-9075

*Prices and availability are subject to change without notice. Minimum order quantity required on select products. Apply code: D2GWEL10 for a 10% discount valid on a purchase of \$300 or more. Discount valid on total purchase price prior to shipping, service fees and taxes. Discount not valid on Services. One coupon per order, per customer. Not valid on previous orders. No rain checks will be offered. Exclusions apply. Expires at 11:59 PM EST on 3/1/2025.



National Business Furniture makes new ways of working a reality. By expertly guiding, planning and furnishing workspaces, we help fuel more impactful workplaces.



Selection

We'll help you find exactly what you need.



Support

We'll help you get it right, and we will work to make it right.



Simplicity

We're set to streamline your commercial furniture purchasing needs — online or off.

→ NBF.com

Get added savings when you opt-in for our emails.*

*Void where prohibited.

Contact us at 855-449-1237 for expert support or help with placing your order.

Locations & Hours

Milwaukee
770 S. 70th Street
Milwaukee, WI, 53214
414-276-8511

Hours:
Monday–Friday: 7:00 am – 6:00 pm CST

Local sales reps available across the U.S.

- To place an order, please call 855-449-1237
- Visit our website at www.NBF.com
- For more information email sales@NBF.com

Volume Discounts

Orders over \$5,000 are eligible for volume discounts. Volume discounts cannot be combined with other merchandise discounts.

Merchandise Value	Discount %
\$5,000–\$5,999	3%
6,000–6,999	4%
7,000–7,999	5%
8,000–8,999	6%
9,000–9,999	7%
10,000–10,999	8%
11,000+	Call for discount

FOB Point: FOB Origin prepaid and add.

Visit us at NBF.com/terms for additional information and FAQs

- Freight and Shipping
- Product Assembly Services
- Chair Sample Program
- Limited Lifetime Warranty
- Environment & Sustainability
- Terms & Conditions
- Return Eligibility
- Free Space Planning

All prices, inventory availability and manufacturer's product specifications are subject to change without notice. Please call or visit NBF.com for latest pricing.



WARNING — Some furniture products can expose you to chemicals known to the State of California to cause cancer or birth defects or other reproductive harm. For specific product details, visit NBF.com and search for the item number.



Shop Your Go-To Furniture Brands at NBF

Did you know? We offer thousands of products from hundreds of trusted suppliers, including items and options for education buyers. In addition, we're pleased to offer robust customization capabilities. For more information, please visit NBF.com or call an expert at 855-449-1237.

View all available product options, sizes and colors online at NBF.com