

# PERSONAL TRANSPORTATION VEHICLES



Shown with optional Yamaha Genuine Accessories.

Where permitted by closed-community regulations or other local ordinance, the Personal Transportation Vehicle (PTV) shown is suitable for use on private/public roads with a maximum posted speed limit of 25 mph. It does not meet federal motor vehicle safety standards applicable to passenger cars.





# THE EASY CHOICE™ WHEN LUXURY, PERFORMANCE AND VALUE MATTER



60  
+ YEARS

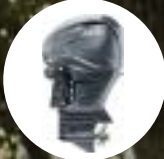
## YAMAHA MOTOR CORPORATION

With Yamaha, every challenge is an opportunity for adventure with our rich pedigree of motor vehicles, including snowmobiles, scooters, ATVs, personal watercraft vehicles and so much more.

BOATS



MARINE ENGINES



GENERATORS



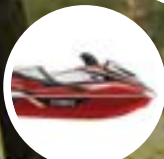
RECREATIONAL  
VEHICLES



MOTORCYCLES



WAVERUNNERS®



ALL-TERRAIN  
VEHICLES



SNOWMOBILES



INTELLIGENT  
MACHINERY



POWER ASSIST  
BICYCLES



REMOTELY PILOTED  
HELICOPTERS



COMFORT ZONE .....	4 - 5	ADVENTURER SPORT 2+2 .....	18 - 19	BATTERY OPTIONS .....	34 - 35
DRIVE² CARS .....	6 - 17	UMAX® CARS .....	20 - 33	PARTS AND ACCESSORIES .....	36 - 37

SPECIFICATIONS .....	38 - 43
----------------------	---------

Shown with optional Yamaha Genuine Accessories.  
Where permitted by closed-community regulations or other local ordinance, the Personal Transportation Vehicle (PTV) shown is suitable for use on private/  
public roads with a maximum posted speed limit of 25 mph. It does not meet federal motor vehicle safety standards applicable to passenger cars.



# EXPERIENCE THE COMFORT ZONE

SMOOTHEST RIDE

LUXURIOUS AMENITIES

RELIABLE CUSTOMER SERVICE



**Discover the pinnacle of comfort, elegance, and support with Yamaha Golf Cars.**

Experience unmatched comfort with every drive—our advanced suspension and precise engineering deliver the smoothest ride for any terrain. Each car features refined amenities designed for convenience and style, offering a luxurious experience that feels tailor-made. Furthermore, our dedicated support team ensures reliable service every step of the way for total peace of mind.

Shown with optional Yamaha Genuine Accessories.

Where permitted by closed-community regulations or other local ordinance, the Personal Transportation Vehicle (PTV) shown is suitable for use on private/public roads with a maximum posted speed limit of 25 mph. It does not meet federal motor vehicle safety standards applicable to passenger cars.



# INNOVATIVE FEATURES AT EVERY TURN



With bold colors and modern body styling, our Drive<sup>2</sup> line-up looks better than ever, but the biggest change is the one you don't see—a smoother ride.

**DRIVE<sup>2</sup>**



## STORAGE BIN AND USB CONNECTIONS

Large dash storage bin with anti-slip mat to keep valuables in place and two USB connections to maintain power and stay charged on the go.



## AUTOMOTIVE-STYLE DASH

Fully equipped with larger cup holders, USB connections and ample space for mobile devices and anything else you want to take on your journey.



## INDEPENDENT REAR SUSPENSION

Experience stability and comfort. Standard on all Drive<sup>2</sup> PowerTech Li, Drive<sup>2</sup> PowerTech AC and Drive<sup>2</sup> QuieTech EFI models.





GLACIER

IN-MOLD



ARCTIC DRIFT

METALLIC



CORAL RED

METALLIC



ONYX

METALLIC



PEARL

METALLIC



PERIDOT

METALLIC



CARBON

METALLIC



TITAN

MATTE



# WHATEVER DRIVES YOU, YAMAHA HAS IT COVERED



## GAS

You can't go wrong with superior gas and electric solutions, all standard with independent front and rear suspension, USB ports, and padded steering wheels. If you prefer gas, the Drive<sup>2</sup> QuieTech EFI provides the quietest ride of any gas car. If you prefer electric, experience the cutting edge of lithium electric vehicles with PowerTech Li, or the time-tested batteries of the PowerTech AC. No matter where your journey takes you, we'll get you there with complete comfort and ease.

FEATURES	DRIVE <sup>2</sup> QUIETECH EFI
Rear Suspension	✔ Independent Suspension
Front Suspension	✔ Independent Suspension
Yamaha-Built Engine	✔ 357cc, low-emission single cylinder 60° incline HOV
Miles Per Gallon	✔ 45 mpg
Easy Access Engine Compartment	✔ Standard
Additional Features	✔ 60.5 dB engine noise

## ELECTRIC

FEATURES	DRIVE <sup>2</sup> POWERTECH Li	DRIVE <sup>2</sup> POWERTECH AC
Rear Suspension	✔ Independent Suspension	✔ Independent Suspension
Front Suspension	✔ Independent Suspension	✔ Independent Suspension
Battery	✔ Lithium-Ion	✔ 6 - 8V Trojan T-875 FLA
Toyota MCU	✔ Standard	✔ Standard
Power Production	✔ 4.4 hp (3.3 kW)	✔ 4.4 hp (3.3 kW)
Delta-Q Charger	✔ Standard	✔ Standard
Additional Features	✔ Zero Maintenance — No Watering	✔ Time Tested Reliability



# THE ONLY LITHIUM-ION-POWERED GOLF CAR WITH IRS

DRIVE<sup>2</sup>  
PowerTech IRS

We engineered and optimized every last detail while creating an ideal balance between efficiency and driving comfort. For the first time ever, Independent Rear Suspension (IRS) now comes standard on the Drive<sup>2</sup> PowerTech Li models. With added comfort and premium shock absorption, now you can enjoy the smoothest ride yet.



DRIVE FARTHER AND SMOOTHER WITH INDEPENDENT FRONT & REAR SUSPENSION.

38 MILES  
DRIVING RANGE

When driven on a flat track.

8 YEAR  
BATTERY LIFE

Estimated based on 17Ah/day.

ZERO  
MAINTENANCE

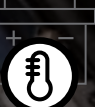
No watering, no tightening.



LONGER LIFE SPAN



RATED HIGHER IN SAFETY



BEST THERMAL STABILITY

OPTIMIZED BY YAMAHA, THE LIFEPO4 BATTERIES ARE SAFER THAN OTHER LITHIUM BATTERY CHEMISTRY OPTIONS.

Where permitted by closed-community regulations or other local ordinance, the Personal Transportation Vehicle (PTV) shown is suitable for use on private/public roads with a maximum posted speed limit of 25 mph. It does not meet federal motor vehicle safety standards applicable to passenger cars.

Shown with optional Yamaha Genuine Accessories





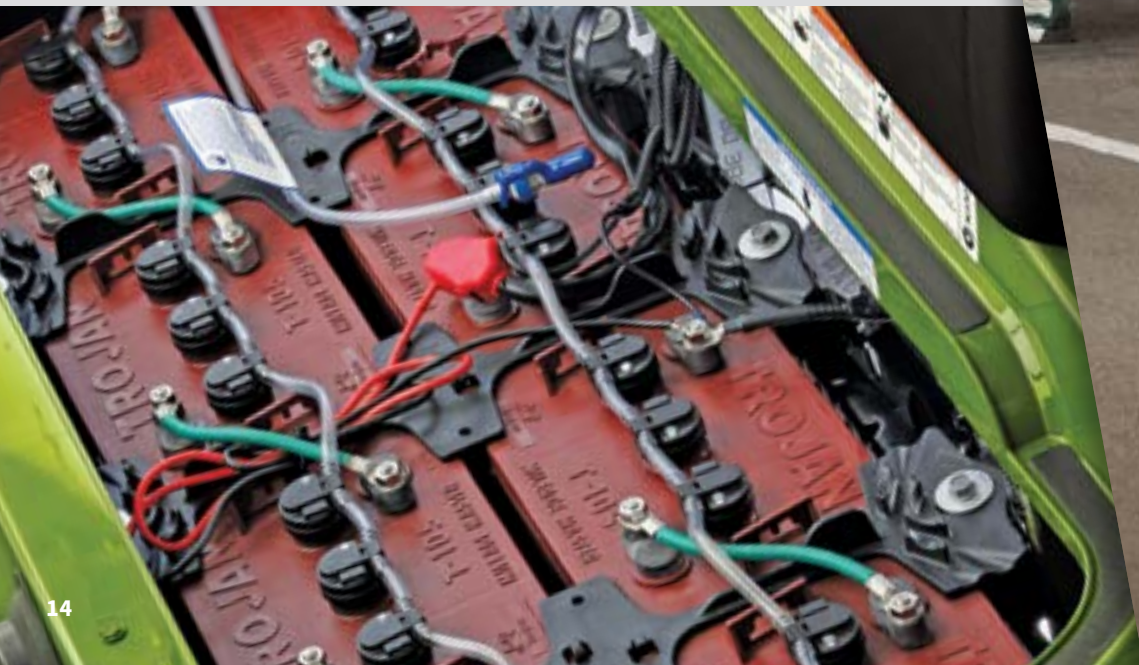
The Drive² PowerTech AC car just keeps getting better. We have paired the same energy-efficient, electric solution you can rely on with the best in leading-edge upgrades. You can navigate terrain with complete comfort and ease with our Drive² PowerTech AC's Independent Rear Suspension (IRS). With other valuable features like standard USB ports and a padded steering wheel, you will wonder how you ever drove any other car.



DRIVE FARTHER AND SMOOTHER WITH INDEPENDENT FRONT & REAR SUSPENSION.

PROVEN PERFORMANCE  
TIME AFTER TIME

With Trojan T-875 FLA batteries



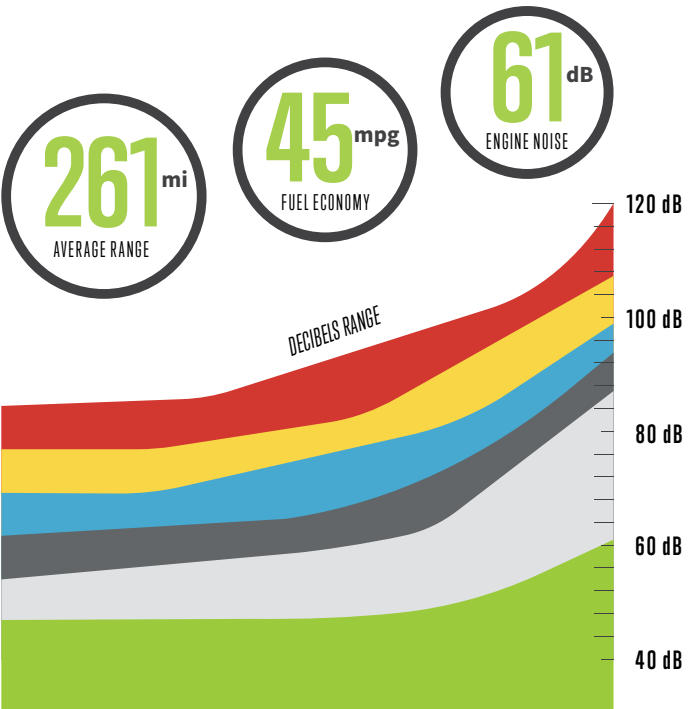
IT'S ALL ABOUT THE JOURNEY





SUNDIAL COFFEE & TEA

Our Personal Transportation Vehicles take the effort out of errands.\* The Drive<sup>2</sup> car handles like a dream and makes even short trips fun! We developed our Quietech EFI technology to create a quieter, more fuel-efficient ride, so you can spend less money on fuel and more on doing the things you love.



# THE ULTIMATE LUXURY GAS CAR

INDUSTRY-FIRST FULLY INDEPENDENT REAR SUSPENSION (IRS)



\*Where permitted by closed-community regulations or other local ordinance, the Personal Transportation Vehicle (PTV) shown is suitable for use on private/public roads with a maximum posted speed limit of 25 mph. It does not meet federal motor vehicle safety standards applicable to passenger cars.

Shown with optional Yamaha Genuine Accessories



# THE BEST OF VALUE AND VERSATILITY

## ADVENTURER SPORT 2+2

Don't let that comfortable seating and sporty design fool you. The Adventurer Sport 2+2 may play nice, but when it's time to take on a tough job, it's ready to work hard. Easily go from cruising around the block with friends to maintaining the community garden or hauling gear for a family camping trip with 250 lbs. of payload capacity, large 20" tires and a lifted suspension.

FOLD DOWN  
SEAT KIT

20 INCH  
TIRES

2 INCH  
LIFT KIT



POWDER-COATED FRONT BRUSH GUARD COMES STANDARD





# A VERSATILE, WELL-ROUNDED UTILITY VEHICLE



With five color options, four-wheel brakes, luxurious bucket seats, an under-hood storage compartment and large 20" tires, all with quiet gas engines or efficient electric motors, you get the features of a hard-working utility vehicle with the feel of a golf car.



## DUMP BED WITH ONE-HAND TAILGATE RELEASE

Featuring an effortless dump bed lock and tailgate, UMAX offers 12.9 cu. ft. capacity with a max load of 800lbs. to get the job done.



## AUTOMOTIVE-STYLE DASH

Completely redesigned for today's professional with large cup holders, battery/fuel gauge, and a large storage area.



## LUXURIOUS BUCKET SEATS

Derived from our award-winning Viking® Side-by-Side, you can enjoy a comfortable ride with support that will last your entire work day.



BUILD YOUR CUSTOM  
UMAX WITH VIBRANT  
COLOR OPTIONS



22 GLACIER



BLUESTONE

METALLIC



CARBON

METALLIC



EVERGREEN

METALLIC



CORAL RED

METALLIC 23





# ALL THE POWER OF YAMAHA IN ONE CAR

## GAS

FEATURES	UMAX EFI
Rear Suspension	✔ Cradle-Smooth Suspension
Front Suspension	✔ Independent Suspension
Yamaha-Built Engine	✔ 402cc, low-emission single cylinder 60° incline HOV
Miles Per Gallon	✔ 45 mpg
Vehicle Capacity	✔ 1,500 lbs
Additional Features	✔ Quiet Operation

## ELECTRIC

FEATURES	UMAX Li	UMAX AC
Rear Suspension	✔ Cradle-Smooth Suspension	✔ Cradle-Smooth Suspension
Front Suspension	✔ Independent Suspension	✔ Independent Suspension
Battery	✔ Lithium-Ion	✔ 6 - 8V Trojan T-105
Toyota MCU	✔ Standard	✔ Standard
Power Production	✔ 6.7 hp (5.0 kW)	✔ 6.7 hp (5.0 kW)
Delta-Q Charger	✔ Standard	✔ Standard
Additional Features	✔ Zero Maintenance — No Watering	✔ Time Tested Reliability



Combining Yamaha's signature power and ruggedness with cutting-edge lithium technology, UMAX Li is the efficient, stress-free choice for your golf course or utility needs. With a maintenance-free\* battery that's built to last, it offers greater longevity, more efficient charging, and a longer driving range to keep you going all day.

THE TRIFECTA OF SPEED,  
RANGE AND RELIABILITY





AVAILABLE WITH UMAX EFI AND UMAX AC POWERTRAINS

The new UMAX Rally® features a lifted suspension, 23" tires wrapped around 12" V-window wheels and comes complete with a Yamaha Genuine front brush guard and fender flares. No matter where your journey takes you, the UMAX Rally is another reason why Yamaha is The Easy Choice.™

RALLY

UMAX

# A UTILITY VEHICLE WITH ATTITUDE



LIFTED  
SUSPENSION

23 INCH  
TIRES

6 INCH  
CLEARANCE



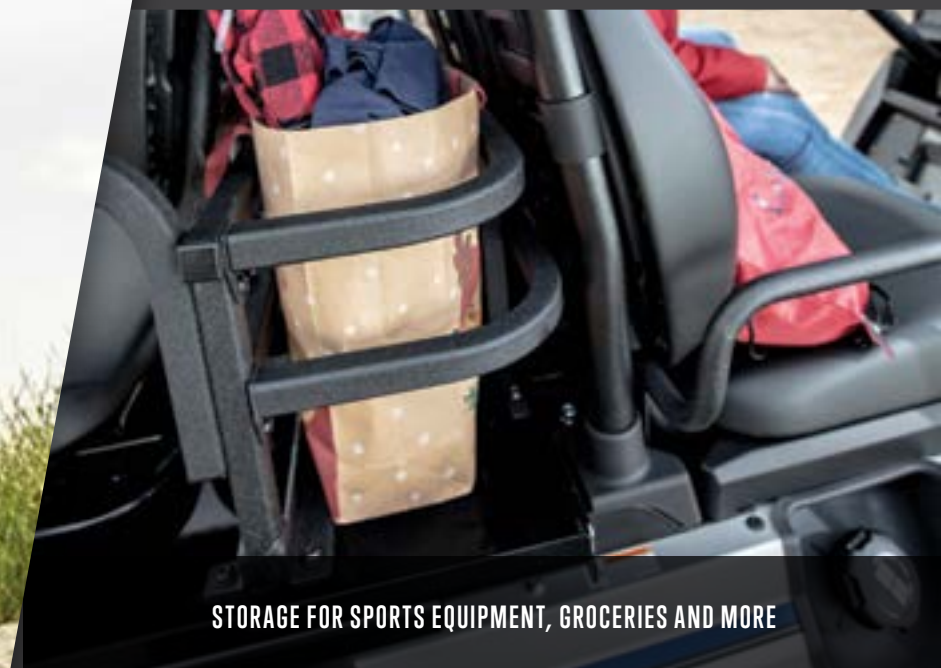
COMES STANDARD WITH FRONT BRUSH GUARD AND FENDER FLARES.

Shown with optional Yamaha Genuine Accessories.

29



# BRING MORE PEOPLE ALONG FOR THE RIDE



STORAGE FOR SPORTS EQUIPMENT, GROCERIES AND MORE

The Saturday itinerary is set: some yard work in the morning, your favorite pizza spot for lunch with friends and then some hardware store errands before calling it a day. With comfortable convertible seating, plenty of storage, and an edgy design that matches your style, the UMAX Rally 2+2 not only fits your job, but it also fits your life.



**200 LB STORAGE CAPACITY**  
REAR FACING FOLD-DOWN SEAT KIT



EVEN BOLDER  
COLOR OPTIONS  
FOR THE RALLY 2+2



BLUESTONE METALLIC



CORAL RED METALLIC



ONYX METALLIC



CYAN



CARBON METALLIC



TITAN MATTE 33



# COMMAND YOUR RIDE WITH UNRELENTING POWER

Choose one of our two trusted battery options. No matter your choice, you are sure to have efficient, reliable power in all of your cars.

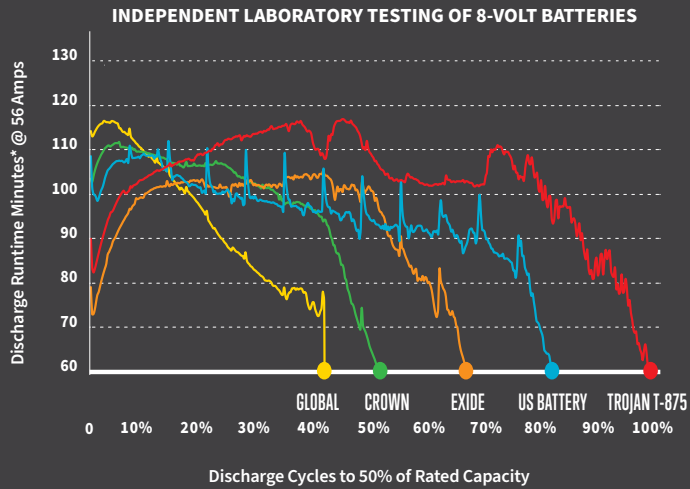


## TROJAN T-875 FLA

### PROVEN PERFORMANCE TIME AFTER TIME

This rock-solid power source is undeniably strong, dependable, and the perfect complement to our Yamaha PTV. It will get you where you need to go.

Vehicles compatible with this battery option:  
Drive² PowerTech AC, Adventure Sport 2+2, UMAX Rally, UMAX Rally²² and UMAX Two.



\* Based on the averaging of two completed separate tests on two batteries for each brand.



## LiFePO4

### WE MADE A GREAT BATTERY BETTER

Our lithium-ion battery was manufactured by RoyPow® and optimized by Yamaha to ensure integrity and unmatched power. We've taken the time to engineer better overall performance for your long-term peace of mind.

- Safer than other lithium battery chemistry options for long-term peace of mind.

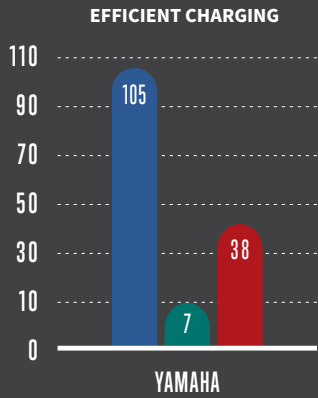
Even after the 5-year warranty, the battery could still have 80% amp-hour life remaining!
- Designed to charge at a speed that yields optimal output performance.

No water filling, no terminal tightening or cleaning.

Data is based on Yamaha's hilly course simulation (Competitors may show different data based on a different testing environment). Based on the averaging of two completed separate tests on two batteries for each brand.

Vehicles compatible with **RoyPow® S51105PC:**  
Drive² PowerTech Li, Li  
Drive² Concierge 4/6 Li,  
Adventurer SuperHauler Li

Vehicles compatible with **RoyPow® S51105PE:**  
UMAX Li

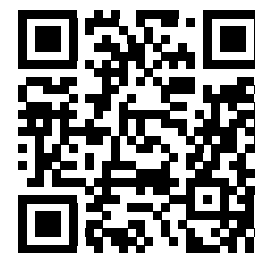






**DON'T EXPECT IT.  
DEMAND IT!®**

All Yamaha Genuine Parts and Accessories have a three-year limited warranty, unless otherwise specified.



**SHOP YAMAHA  
GENUINE PARTS  
AND ACCESSORIES**





DRIVE² POWERTECH LI

DIMENSIONS	
OVERALL LENGTH	93.6 in (238 cm)
OVERALL WIDTH	47.3 in (120 cm)
OVERALL HEIGHT (WITH SUN TOP)	71.8 in (182 cm)
WHEELBASE	64.6 in (164 cm)
FRONT WHEEL TREAD	34.7 in (88 cm)
REAR WHEEL TREAD	38.9 in (99 cm)
MINIMUM GROUND CLEARANCE	6.1 in (16 cm)
CURB WEIGHT (WITH SUN TOP, WINDSHIELD AND BATTERY)	365.3 kg (805.3 lb)

GENERAL	
TIRE SIZE	18 x 8.5 - 8 (4-ply rating)
SEATING CAPACITY	Two persons / 4 persons with optional rear seat.
AVAILABLE MODEL COLORS	In-Mold: Glacier, Matte: Titan, Arctic Drift, Metallic: Carbon, Coral Red, Onyx, Peridot
AVAILABLE SEAT & SUN TOP COLOR	Standard: Stone   Optional: Black
WARRANTY	Standard 4-year limited vehicle warranty

MOTOR / DRIVE TRAIN / POWER SUPPLY	
MOTOR	48-volt AC Motor
OUTPUT RATING	6.7 hp (5.0 kW)
MOTOR CONTROL UNIT	Toyota Industries-built motor controller unit
BATTERIES	Lithium Iron Phosphate
CHARGER	Delta-Q Charger

CHASSIS	
FRAME	HybriCore™ Chassis features a robotic welded automotive ladder-style steel frame protected with a multi-step full-immersion phosphate treatment, electro-deposition epoxy-based coating, and an electrostatic applied polyester/urethane powder topcoat
BODY	Mold-in Polypropylene for Glacier color. Custom-formulated thermoplastic olefin painted with a two-part top coat of high-luster automotive-grade polyurethane
STEERING	Self-compensating double reduction helical rack-and-pinion
FRONT SUSPENSION	Tru-Trak II™ fully independent automotive-style strut suspension
REAR SUSPENSION	Fully independent automotive-style strut suspension
BRAKES	Self-adjusting mechanical, rear wheel drum brakes
BUMPERS	Front and rear 5 mph energy-absorbing bumpers

PERFORMANCE	
MAX SPEED ADJUSTABLE	19.5 mph (24 km/h)
MINIMUM TURNING RADIUS	9 ft (2.8 m)

DRIVE² POWERTECH AC

DIMENSIONS	
OVERALL LENGTH	93.6 in (238 cm)
OVERALL WIDTH	47.3 in (120 cm)
OVERALL HEIGHT (WITH SUN TOP)	70.6 in (179 cm)
WHEELBASE	64.6 in (164 cm)
FRONT WHEEL TREAD	34.7 in (88 cm)
REAR WHEEL TREAD	38.9 in (99 cm)
MINIMUM GROUND CLEARANCE	4.9 in (12 cm)
CURB WEIGHT (WITH SUN TOP AND BATTERY)	482 kg (1063 lb)

GENERAL	
TIRE SIZE	18 x 8.5 - 8 (4-ply rating)
SEATING CAPACITY	Two persons / 4 persons with optional rear seat.
AVAILABLE MODEL COLORS	In-Mold: Glacier, Matte: Titan, Arctic Drift, Metallic: Carbon, Coral Red, Onyx, Peridot
AVAILABLE SEAT & SUN TOP COLOR	Standard: Stone   Optional: Black
WARRANTY	Standard 4-year limited vehicle warranty

MOTOR / DRIVE TRAIN / POWER SUPPLY	
MOTOR	48-volt AC Motor
OUTPUT RATING	6.7 hp (5.0 kW)
MOTOR CONTROL UNIT	Toyota Industries-built motor controller unit
BATTERIES	Standard: Six 8-volt Motive T875 Optional: Eight 6-volt Trojan T105
CHARGER	Delta-Q Charger

CHASSIS	
FRAME	HybriCore™ Chassis features a robotic welded automotive ladder-style steel frame protected with a multi-step full-immersion phosphate treatment, electro-deposition epoxy-based coating, and an electrostatic applied polyester/urethane powder topcoat
BODY	Mold-in Polypropylene for Glacier color. Custom-formulated thermoplastic olefin painted with a two-part top coat of high-luster automotive-grade polyurethane
STEERING	Self-compensating double reduction helical rack-and-pinion
FRONT SUSPENSION	Tru-Trak II™ fully independent automotive-style strut suspension
REAR SUSPENSION	Fully independent automotive-style strut suspension
BRAKES	Self-adjusting mechanical, rear wheel drum brakes
BUMPERS	Front and rear 5 mph energy-absorbing bumpers

PERFORMANCE	
MAX SPEED ADJUSTABLE	19.5 mph (24 km/h)
MINIMUM TURNING RADIUS	9 ft (2.8 m)

DRIVE² QUIETECH EFI

DIMENSIONS	
OVERALL LENGTH	93.6 in (238 cm)
OVERALL WIDTH	47.3 in (120 cm)
OVERALL HEIGHT (WITH SUN TOP)	70.2 in (178 cm)
WHEELBASE	64.4 in (164 cm)
FRONT WHEEL TREAD	34.8 in (88 cm)
REAR WHEEL TREAD	38.3 in (97 cm)
MINIMUM GROUND CLEARANCE	4.3 in (11 cm)
CURB WEIGHT (WITH SUN TOP, BATTERY, OIL AND GASOLINE)	356 kg (785 lb)

GENERAL	
FUEL TANK CAPACITY	5.8 U.S. gal (22 liters)
TIRE SIZE	205/65 - 10 DOT (4-ply rating)
SEATING CAPACITY	Two persons / 4 persons with optional rear seat.
AVAILABLE MODEL COLORS	In-Mold: Glacier, Matte: Titan, Arctic Drift, Metallic: Carbon, Coral Red, Onyx, Peridot
AVAILABLE SEAT & SUN TOP COLOR	Standard: Stone   Optional: Black
WARRANTY	Standard 4-year limited vehicle warranty

ENGINE / DRIVE TRAIN	
ENGINE TYPE	Yamaha-built, 357 cc, low-emission single cylinder 60° incline OHV
OIL CAPACITY	1 U.S. quart (1 liter, 1000 cc)
AIR CLEANER	Two-stage, urethane-foam pre-cleaner, and high-capacity pleated paper cartridge
COOLING SYSTEM	Forced air
STARTING SYSTEM	Starter generator with pedal start system
FUEL SYSTEM	EFI - Electronic Fuel Injection

CHASSIS	
FRAME	HybriCore™ Chassis features a robotic welded automotive ladder-style steel frame protected with a multi-step full-immersion phosphate treatment, electro-deposition epoxy-based coating, and an electrostatic applied polyester/urethane powder topcoat
BODY	Mold-in Polypropylene for Glacier color. Custom-formulated thermoplastic olefin painted with a two-part top coat of high-luster automotive-grade polyurethane
STEERING	Self-compensating double reduction helical rack-and-pinion
FRONT SUSPENSION	Tru-Trak II™ fully independent automotive-style strut suspension
REAR SUSPENSION	Fully independent automotive-style strut suspension
BRAKES	Self-adjusting mechanical, rear wheel drum brakes
BUMPERS	Front and rear 5 mph energy-absorbing bumpers

PERFORMANCE	
MAX SPEED ADJUSTABLE	19.0 mph (31 km/h)
MINIMUM TURNING RADIUS	9.5 ft (2.9 m)

ADVENTURER SPORT 2+2 EFI

DIMENSIONS	
OVERALL LENGTH	108.3 in (275 cm)
OVERALL WIDTH	50.8 in (129 cm)
OVERALL HEIGHT (NO SUN TOP)	50 in (127 cm)
WHEELBASE	64.4 in (164 cm)
FRONT WHEEL TREAD	37.8 in (96 cm)
REAR WHEEL TREAD	39.8 in (101 cm)
MINIMUM GROUND CLEARANCE	6.3 in (16 cm)
DRY WEIGHT (WITH SUN TOP, BATTERY, OIL AND GASOLINE)	441 kg (972 lb)

GENERAL	
FUEL TANK CAPACITY	5.8 U.S. gal (22 liters)
TIRE SIZE	20x10-8 (4-ply rating)
SEATING CAPACITY	Four persons
AVAILABLE MODEL COLORS	In-Mold: Glacier, Matte: Titan, Arctic Drift, Metallic: Carbon, Coral Red, Onyx, Peridot
AVAILABLE SEAT & SUN TOP COLOR	Standard: Stone   Optional: Black
WARRANTY	Standard 2-year limited vehicle warranty

ENGINE / DRIVE TRAIN / POWER SUPPLY	
ENGINE TYPE	Yamaha-built, 357 cc, low-emission single cylinder 60° incline OHV
LUBRICATION SYSTEM	Splash-style positive oil lubrication
OIL CAPACITY	1 U.S. quart (1 liter, 1000 cc)
AIR CLEANER	Two-stage, urethane-foam pre-cleaner, and high-capacity pleated paper cartridge
COOLING SYSTEM	Forced air
STARTING SYSTEM	Starter generator with pedal start system
FUEL SYSTEM	EFI - Electronic Fuel Injection

CHASSIS	
FRAME	HybriCore™ Chassis features a robotic welded automotive ladder-style steel frame protected with a multi-step full-immersion phosphate treatment, electro-deposition epoxy-based coating, and an electrostatic applied polyester/urethane powder topcoat
BODY	Mold-in Polypropylene for Glacier color. Custom-formulated thermoplastic olefin painted with a two-part top coat of high-luster automotive-grade polyurethane
STEERING	Self-compensating double reduction helical rack-and-pinion
FRONT SUSPENSION	Tru-Trak II™ fully independent automotive-style strut suspension
REAR SUSPENSION	Fully independent automotive-style strut suspension
BRAKES	Self-adjusting mechanical, rear wheel drum brakes
BUMPERS	Front and rear 5 mph energy-absorbing bumpers

PERFORMANCE	
MAX SPEED ADJUSTABLE	14.9 mph (24 km/h)
MINIMUM TURNING RADIUS	9 ft (3 m)



ADVENTURER SPORT 2+2 AC

DIMENSIONS	
OVERALL LENGTH	108.3 in (275 cm)
OVERALL WIDTH	50.8 in (129 cm)
OVERALL HEIGHT (NO SUN TOP)	50 in (127 cm)
WHEELBASE	64.4 in (164 cm)
FRONT WHEEL TREAD	37.8 in (96 cm)
REAR WHEEL TREAD	39.8 in (101 cm)
MINIMUM GROUND CLEARANCE	5.1 in (13 cm)
DRY WEIGHT (WITH SUN TOP)	531 kg (1170 lb)

GENERAL	
TIRE SIZE	20x10-8 (4-ply rating)
SEATING CAPACITY	Four persons
AVAILABLE MODEL COLORS	In-Mold: Glacier, Matte: Titan, Arctic Drift, Metallic: Carbon, Coral Red, Onyx, Peridot
AVAILABLE SEAT & SUN TOP COLOR	Standard: Stone   Optional: Black
WARRANTY	Standard 2-year limited vehicle warranty

MOTOR / DRIVE TRAIN / POWER SUPPLY	
MOTOR	48-volt AC Motor
OUTPUT RATING	6.7 hp (5.0 KW)
MOTOR CONTROL UNIT	NEOS 350 amp AC controller by Toyota Industries Corporation
BATTERIES	Standard: Six 8-volt Motive T875 Optional: Eight 6-volt Trojan T105
CHARGER	Delta-Q Charger

CHASSIS	
FRAME	HybriCore™ Chassis features a robotic welded automotive ladder-style steel frame protected with a multi-step full-immersion phosphate treatment, electro-deposition epoxy-based coating, and an electrostatic applied polyester/urethane powder topcoat
BODY	Mold-in Polypropylene for Glacier color. Custom-formulated thermoplastic olefin painted with a two-part top coat of high-luster automotive-grade polyurethane
STEERING	Self-compensating double reduction helical rack-and-pinion
FRONT SUSPENSION	Tru-Trak II™ fully independent automotive-style strut suspension
REAR SUSPENSION	Unit swing arm with DUAL RATE coil springs over hydraulic shock absorbers
BRAKES	Self-adjusting mechanical, rear wheel drum brakes
BUMPERS	Front and rear 5 mph energy-absorbing bumpers

PERFORMANCE	
MAX SPEED ADJUSTABLE	14.9 mph (24 km/h)
MINIMUM TURNING RADIUS	9 ft (3 m)

UMAX EFI

DIMENSIONS	
OVERALL LENGTH	119.4 in (303.0 cm)
OVERALL HEIGHT (NO SUN TOP)	48.54 in (123.3cm)
OVERALL HEIGHT (WITH SUN TOP)	71.6 in (182.5 cm)
OVERALL WIDTH	49.6 in (125.5 cm)
WHEELBASE	77.2 in (196.1 cm)
FRONT WHEEL TREAD	40.3 in (102.5 cm)
REAR WHEEL TREAD	40.2 in (102.0 cm)
MINIMUM GROUND CLEARANCE	4.5 in (11.5 cm)
CURB WEIGHT (WITH SUN TOP, BATTERY, OIL AND GASOLINE)	483 kg (1064 lb)

GENERAL	
FUEL TANK CAPACITY	5.2 US GAL (20 LITERS)
TIRE SIZE	20x10-10 4-ply Monitor K389 (front) K500 (rear)
SEATING CAPACITY	Two persons
AVAILABLE MODEL COLORS	Glacier, Coral Red, Bluestone, Carbon, Evergreen
AVAILABLE SEAT COLORS	Black
AVAILABLE SUN TOP COLORS	Black
WARRANTY	Standard 2-year limited vehicle warranty

ENGINE / DRIVE TRAIN	
ENGINE TYPE	Yamaha-built 402 cc, Low Emission Single Cylinder 60° Incline OHV
LUBRICATION SYSTEM	Splash-style positive oil lubrication
OIL CAPACITY	1.16 U.S. quart (1.1 liter, 1100cc), Yamalube 10W-30
AIR CLEANER	Two-stage, urethane-foam pre-cleaner, and high-capacity pleated paper cartridge
COOLING SYSTEM	Forced air
FUEL SYSTEM	Electronic fuel injection
STARTING SYSTEM	Starter generator with pedal start system
HORSEPOWER	3600 rpm (14.25 hp)

CHASSIS	
FRAME	HybriCore™ Chassis features a robotic welded automotive ladder-style steel frame protected with a multi-step full-immersion phosphate treatment, electro-deposition epoxy-based coating, and an electrostatic applied polyester/urethane powder topcoat
BODY	Custom-formulated thermoplastic olefin painted with a two-part top coat of high-luster automotive-grade polyurethane
STEERING	Self-compensating double reduction helical rack-and-pinion
FRONT SUSPENSION	Tru-Trak II™ fully independent automotive-style strut suspension
REAR SUSPENSION	Unit swing arm with DUAL RATE coil springs over hydraulic shock absorbers
BRAKES	Self-adjusting mechanical, front and rear wheel drum brakes
CARGO BED MAX LOAD	800 lb
ROLLING TRAILER MAX WEIGHT	1,200 lb
MAX TONGUE WEIGHT	150 lb
VEHICLE RATED CAPACITY	1,500 lb
CARGO BED DIMENSIONS	41.1" L x 45.9" W x 11.8" H

PERFORMANCE	
MAX FORWARD SPEED	19.5 mph (31.4 km/h)
MAX REVERSE SPEED	13.1 mph (21 km/h)
MINIMUM TURNING RADIUS	4.0 m
G.V.W.	2,533 lb

UMAX AC

DIMENSIONS	
OVERALL LENGTH	119.4 in (303.0 cm)
OVERALL HEIGHT (NO SUN TOP)	48.54 in (123.3 cm)
OVERALL HEIGHT (WITH SUN TOP)	71.6 in (182.5 cm)
OVERALL WIDTH	49.3 in (125.5 cm)
WHEELBASE	77.2 in (196.0 cm)
FRONT WHEEL TREAD	40.3 in (102.5 cm)
REAR WHEEL TREAD	40.2 in (102.0 cm)
MINIMUM GROUND CLEARANCE	4.5 in (11.5 cm)
CURB WEIGHT (WITH SUN TOP)	658 kg (1451 lb)

GENERAL	
TIRE SIZE	20x10-10 4-ply Monitor K389 (front) K500 (rear)
SEATING CAPACITY	Two persons
AVAILABLE MODEL COLORS	Glacier, Coral Red, Bluestone, Carbon, Evergreen
AVAILABLE SEAT COLORS	Black
AVAILABLE SUN TOP COLORS	Black
WARRANTY	Standard 2-year limited vehicle warranty
STANDARD RECEIVER HITCH	2"

MOTOR / DRIVE TRAIN / POWER SUPPLY	
MOTOR	48-volt AC
OUTPUT RATING	6.7 hp (5.0 kW for 60 minutes)
MOTOR CONTROL UNIT	NEOS 350 amp AC controller by Toyota Industries Corporation
BATTERIES	Standard: Eight 6-volt Trojan T-105 Batteries

CHASSIS	
FRAME	HybriCore™ Chassis features a robotic welded automotive ladder-style steel frame protected with a multi-step full-immersion phosphate treatment, electro-deposition epoxy-based coating, and an electrostatic applied polyester/urethane powder topcoat
BODY	Custom-formulated thermoplastic olefin painted with a two-part top coat of high-luster automotive-grade polyurethane
STEERING	Self-compensating double reduction helical rack-and-pinion
FRONT SUSPENSION	Tru-Trak II™ fully independent automotive-style strut suspension
REAR SUSPENSION	Unit swing arm with DUAL RATE coil springs over hydraulic shock absorbers
BRAKES	Self-adjusting mechanical, front and rear wheel drum brakes
CARGO BED MAX LOAD	800 lb
ROLLING TRAILER MAX WEIGHT	1,200 lb
MAX TONGUE WEIGHT	150 lb
VEHICLE RATED CAPACITY	1,500 lb
CARGO BED DIMENSIONS	41.1" L x 45.9" W x 11.8" H

PERFORMANCE	
MAX FORWARD SPEED	19.5 mph (31.4 km/h)
MAX REVERSE SPEED	6.2 mph (10 km/h)
MINIMUM TURNING RADIUS	4.0 m

UMAX LI

DIMENSIONS	
OVERALL LENGTH	119.4 in (303.0 cm)
OVERALL HEIGHT (NO SUN TOP)	48.54 in (123.3 cm)
OVERALL HEIGHT (WITH SUN TOP)	71.6 in (182.5 cm)
OVERALL WIDTH	49.3 in (125.5 cm)
WHEELBASE	77.2 in (196.0 cm)
FRONT WHEEL TREAD	40.3 in (102.5 cm)
REAR WHEEL TREAD	40.2 in (102.0 cm)
MINIMUM GROUND CLEARANCE	4.5 in (11.5 cm)
CURB WEIGHT (WITH SUN TOP)	523 kg (1153 lb)

GENERAL	
TIRE SIZE	20x10-10 4-ply Monitor K389 (front) K500 (rear)
SEATING CAPACITY	Two persons
AVAILABLE MODEL COLORS	Coral Red, Bluestone, Evergreen, Carbon, Glacier
AVAILABLE SEAT COLORS	Black
AVAILABLE SUN TOP COLORS	Black
WARRANTY	Standard 2-year limited vehicle warranty
STANDARD RECEIVER HITCH	2"

MOTOR / DRIVE TRAIN / POWER SUPPLY	
MOTOR	48-volt AC
OUTPUT RATING	6.7 hp (5.0 kW for 60 minutes)
MOTOR CONTROL UNIT	NEOS 350 amp AC controller by Toyota Industries Corporation
BATTERIES	RoyPow S51105PE (51-Volt)

CHASSIS	
FRAME	HybriCore™ Chassis features a robotic welded automotive ladder-style steel frame protected with a multi-step full-immersion phosphate treatment, electro-deposition epoxy-based coating, and an electrostatic applied polyester/urethane powder topcoat
BODY	Custom-formulated thermoplastic olefin painted with a two-part top coat of high-luster automotive-gradepolyurethane
STEERING	Self-compensating double reduction helical rack-and-pinion
FRONT SUSPENSION	Tru-Trak II™ fully independent automotive-style strut suspension
REAR SUSPENSION	Unit swing arm with DUAL RATE coil springs over hydraulic shock absorbers
BRAKES	Self-adjusting mechanical, front and rear wheel drum brakes
CARGO BED MAX LOAD	800 lb
ROLLING TRAILER MAX WEIGHT	1,200 lb
MAX TONGUE WEIGHT	150 lb
VEHICLE RATED CAPACITY	1,500 lb
CARGO BED DIMENSIONS	41.1" L x 45.9" W x 11.8" H

PERFORMANCE	
MAX FORWARD SPEED	19.5 mph (31.4 km/h)
MAX REVERSE SPEED	6.2 mph (10 km/h)
MINIMUM TURNING RADIUS	4.0 m



RALLY EFI

DIMENSIONS	
OVERALL LENGTH	122.6 in (311.5 cm)
OVERALL HEIGHT (NO SUN TOP)	50.7 in (128.8 cm)
OVERALL HEIGHT (WITH SUN TOP)	74.0 in (188 cm)
OVERALL WIDTH	53.5 in (136 cm)
WHEELBASE	77.4 in (196.5 cm)
FRONT WHEEL TREAD	41.3 in (105.0 cm)
REAR WHEEL TREAD	41.3 in (105.0 cm)
MINIMUM GROUND CLEARANCE	5.9 in (15.0 cm)
CURB WEIGHT (WITH SUN TOP, BATTERY, OIL AND GASOLINE)	501 kg (1105 lb)

GENERAL	
FUEL TANK CAPACITY	5.2 US GAL (20 LITERS)
TIRE SIZE	23x10.5-12 4-ply Monitor K389 (front) K500 (rear)
SEATING CAPACITY	Two persons
AVAILABLE MODEL COLORS	Glacier, Coral Red, Bluestone, Carbon, Evergreen
AVAILABLE SEAT & SUN TOP COLOR	Black
WARRANTY	Standard 2-year limited vehicle warranty
STANDARD RECEIVER HITCH	2"

ENGINE / DRIVE TRAIN	
ENGINE TYPE	Yamaha-built 402 cc, Low Emission Single Cylinder 60° Incline OHV
LUBRICATION SYSTEM	Splash-style positive oil lubrication
OIL CAPACITY	1.16 U.S. quart (1.1 liter, 1100 cc), Yamalube 10W-30
AIR CLEANER	Two-stage, urethane-foam pre-cleaner, and high-capacity pleated paper cartridge
COOLING SYSTEM	Forced air
FUEL SYSTEM	Electronic fuel injection
STARTING SYSTEM	Starter generator with pedal start system
HORSEPOWER	3600 rpm (14.25 hp)

CHASSIS	
FRAME	HybriCore™ Chassis features a robotic welded automotive ladder-style steel frame protected with a multi-step full-immersion phosphate treatment, electro-deposition epoxy-based coating, and an electrostatic applied polyester/urethane powder topcoat
BODY	Custom-formulated thermoplastic olefin painted with a two-part top coat of high-luster automotive-grade polyurethane
STEERING	Self-compensating double reduction helical rack-and-pinion
FRONT SUSPENSION	Tru-Trak II™ fully independent automotive-style strut suspension
REAR SUSPENSION	Unit swing arm with DUAL RATE coil springs over hydraulic shock absorbers
BRAKES	Self-adjusting mechanical, front and rear wheel drum brakes
CARGO BED MAX LOAD	800 lb
ROLLING TRAILER MAX WEIGHT	1,500 lb
MAX TONGUE WEIGHT	150 lb
VEHICLE RATED CAPACITY	1,500 lb
CARGO BED DIMENSIONS	41.1" L x 45.9" W x 11.8" H

PERFORMANCE	
MAX FORWARD SPEED	19.5 mph (31.4 km/h)
MAX REVERSE SPEED	13.1 mph (21km/h)
MINIMUM TURNING RADIUS	4.0 m
G.V.W.	2,533 lb

RALLY AC

DIMENSIONS	
OVERALL LENGTH	122.5 in (311.5 cm)
OVERALL HEIGHT (NO SUN TOP)	50.7 in (128.8 cm)
OVERALL HEIGHT (WITH SUN TOP)	74.02 in (188 cm)
OVERALL WIDTH	53.5 in (136 cm)
WHEELBASE	77.3 in (196.5 cm)
FRONT WHEEL TREAD	41.3 in (104.8 cm)
REAR WHEEL TREAD	41.3 in (104.8 cm)
MINIMUM GROUND CLEARANCE	5.9 in (15.0 cm)
CURB WEIGHT (WITH SUN TOP)	676 kg (1490 lb)

GENERAL	
TIRE SIZE	23x10.5-12 4-ply Monitor K389 (front) K500 (rear)
SEATING CAPACITY	Two persons
AVAILABLE MODEL COLORS	Glacier, Coral Red, Bluestone, Carbon, Evergreen
AVAILABLE SEAT & SUN TOP COLOR	Black
WARRANTY	Standard 2-year limited vehicle warranty
STANDARD RECEIVER HITCH	2"

MOTOR / DRIVE TRAIN	
MOTOR	48-volt AC
OUTPUT RATING	6.7 hp (5.0 kW)
MOTOR CONTROL UNIT	NEOS 350 amp AC controller by Toyota Industries Corporation
BATTERIES	Standard: Eight 6-volt Trojan T-105 Batteries

CHASSIS	
FRAME	HybriCore™ Chassis features a robotic welded automotive ladder-style steel frame protected with a multi-step full-immersion phosphate treatment, electro-deposition epoxy-based coating, and an electrostatic applied polyester/urethane powder topcoat
BODY	Custom-formulated thermoplastic olefin painted with a two-part top coat of high-luster automotive-grade polyurethane
STEERING	Self-compensating double reduction helical rack-and-pinion
FRONT SUSPENSION	Tru-Trak II™ fully independent automotive-style strut suspension
REAR SUSPENSION	Unit swing arm with DUAL RATE coil springs over hydraulic shock absorbers
BRAKES	Self-adjusting mechanical, front and rear wheel drum brakes
CARGO BED MAX LOAD	800 lb
ROLLING TRAILER MAX WEIGHT	1,500 lb
MAX TONGUE WEIGHT	150 lb
VEHICLE RATED CAPACITY	1,500 lb
CARGO BED DIMENSIONS	41.1" L x 45.9" W x 11.8" H

PERFORMANCE	
MAX FORWARD SPEED	19.5 mph (31.4 km/h)
MAX REVERSE SPEED	6.2 mph (10 km/h)
MINIMUM TURNING RADIUS	4.0 m
G.V.W.	2,910 lb

RALLY <sup>2+2</sup> EFI

DIMENSIONS	
OVERALL LENGTH	134.4 in (341.5 cm)
OVERALL HEIGHT (NO SUN TOP)	57.48 in (146 cm)
OVERALL HEIGHT (WITH SUN TOP)	77.20 in (196.0 cm)
OVERALL WIDTH	53.5 in (136 cm)
WHEELBASE	77.4 in (196.5 cm)
FRONT WHEEL TREAD	41.3 in (105.0 cm)
REAR WHEEL TREAD	41.3 in (105.0 cm)
MINIMUM GROUND CLEARANCE	5.9 in (15.0 cm)
CURB WEIGHT	610 kg (1345 lb)

GENERAL	
FUEL TANK CAPACITY	5.2 US GAL (20 LITERS)
TIRE SIZE	23x10.5-12 4-ply Monitor K389 (front) K500 (rear)
SEATING CAPACITY	Four persons
AVAILABLE MODEL COLORS	Glacier, Coral Red, Bluestone, Cyan, Onyx, Carbon Matte: Titan
AVAILABLE SEAT & SUN TOP COLOR	Black
WARRANTY	Standard 2-year limited vehicle warranty

MOTOR / DRIVE TRAIN	
ENGINE TYPE	Yamaha-built 402 cc, Low Emission Single Cylinder 60° Incline OHV
LUBRICATION SYSTEM	Splash-style positive oil lubrication
OIL CAPACITY	1.16 U.S. quart (1.1 liter, 1100 cc), Yamalube 10W-30
AIR CLEANER	Two-stage, urethane-foam pre-cleaner, and high-capacity pleated paper cartridge
COOLING SYSTEM	Forced air
FUEL SYSTEM	Electronic fuel injection
STARTING SYSTEM	Starter generator with pedal start system
HORSEPOWER	3600 rpm (14.25 hp)

CHASSIS	
FRAME	HybriCore™ Chassis features a robotic welded automotive ladder-style steel frame protected with a multi-step full-immersion phosphate treatment, electro-deposition epoxy-based coating, and an electrostatic applied polyester/urethane powder topcoat
BODY	Custom-formulated thermoplastic olefin painted with a two-part top coat of high-luster automotive-grade polyurethane
STEERING	Self-compensating double reduction helical rack-and-pinion
FRONT SUSPENSION	Tru-Trak II™ fully independent automotive-style strut suspension
REAR SUSPENSION	Unit swing arm with DUAL RATE coil springs over hydraulic shock absorbers
BRAKES	Mechanical, 4-wheel drum
FLIP-SEAT CARGO BED MAX LOAD	250 lb
MAXIMUM COMBINED LOAD WITH TWO PASSENGERS AND CARGO	400 lb
VEHICLE RATED CAPACITY	1,000 lb

PERFORMANCE	
MAX FORWARD SPEED	15 mph (24.1 km/h)
MAX REVERSE SPEED	11.2 mph (18 km/h)
MINIMUM TURNING RADIUS	4.0 m
G.V.W.	2,717 lb

RALLY <sup>2+2</sup> AC

DIMENSIONS	
OVERALL LENGTH	134.4 in (341.5 cm)
OVERALL HEIGHT (NO SUN TOP)	57.48 in (146 cm)
OVERALL HEIGHT (WITH SUN TOP)	77.20 in (196.0 cm)
OVERALL WIDTH	53.54 in (136 cm)
WHEELBASE	77.4 in (196.5 cm)
FRONT WHEEL TREAD	41.3 in (105.0 cm)
REAR WHEEL TREAD	41.3 in (105.0 cm)
MINIMUM GROUND CLEARANCE	5.9 in (15.0 cm)
CURB WEIGHT	779 kg (1717 lb)

GENERAL	
TIRE SIZE	23x10.5-12 4-ply Monitor K389 (front) K500 (rear)
SEATING CAPACITY	Four persons
AVAILABLE MODEL COLORS	Glacier, Coral Red, Bluestone, Cyan, Onyx, Carbon Matte: Titan
AVAILABLE SEAT & SUN TOP COLOR	Black
WARRANTY	Standard 2-year limited vehicle warranty

MOTOR / DRIVE TRAIN	
MOTOR	48-volt AC
OUTPUT RATING	6.7 hp (5.0 kW for 60 minutes)
MOTOR CONTROL UNIT	NEOS 350 amp AC controller by Toyota Industries Corporation
BATTERIES	Standard: Eight 6-volt Trojan T-105 Batteries

CHASSIS	
FRAME	HybriCore™ Chassis features a robotic welded automotive ladder-style steel frame protected with a multi-step full-immersion phosphate treatment, electro-deposition epoxy-based coating, and an electrostatic applied polyester/urethane powder topcoat
BODY	Custom-formulated thermoplastic olefin painted with a two-part top coat of high-luster automotive-grade polyurethane
STEERING	Self-compensating double reduction helical rack-and-pinion
FRONT SUSPENSION	Tru-Trak II™ fully independent automotive-style strut suspension
REAR SUSPENSION	Unit swing arm with DUAL RATE coil springs over hydraulic shock absorbers
BRAKES	Mechanical, 4-wheel drum
CARGO BED MAX LOAD	-
ROLLING TRAILER MAX WEIGHT	1,200 lb
MAX TONGUE WEIGHT	400 lb
VEHICLE RATED CAPACITY	1,000 lb
CARGO BED DIMENSIONS	-

PERFORMANCE	
MAX FORWARD SPEED	15 mph (24.1 km/h)
MAX REVERSE SPEED	6.2 mph (10 km/h)
MINIMUM TURNING RADIUS	4.0 m
G.V.W.	2,345 lb





Shown with optional Yamaha Genuine Accessories

Where permitted by closed-community regulations or other local ordinance, the Personal Transportation Vehicle (PTV) shown is suitable for use on private/public roads with a maximum posted speed limit of 25 mph. It does not meet federal motor vehicle safety standards applicable to passenger cars.



1270 Chastain Road NW  
Kennesaw, Georgia 30144  
1.866.747.4027 | [YamahaGolfCar.com](https://www.YamahaGolfCar.com)



Scan for a digital  
copy of this brochure

This document contains many of the valuable trademarks and service marks owned and used by Yamaha throughout the world. The document may also contain references to other company, brand, and product names that may be the trademarks/service marks of their respective owners. Unless noted otherwise, these company, brand, and product names are used herein for identification purposes only, and reference to any names, marks, products, or services of third parties do not constitute or imply endorsement, sponsorship, or recommendation of the third party or the product or services. Products and specifications are subject to change without notice.