

WE CREATE



INSPIRING FURNITURE



FOR LEARNING SPACES







**WHO WE ARE**

At Paragon Furniture, we believe the future of education is not just in the curriculum, but in the very spaces where learning happens. We're not just making furniture; we're crafting the foundation for vibrant learning communities.

For educators who see beyond the traditional, who understand that the environment is as crucial as the lesson plan, Paragon is your ally. Our furniture is designed for the dynamic, for the innovative, for the spaces that inspire creativity & foster collaboration.

We create inspiring furniture for learning spaces.





CLASSROOM



BEST SELLERS



A&D KOI DESK

EMOJI CHAIR

CROSSFIT FLIP-TOP

LIBRARY



BEST SELLERS



IC MOBILE SHELVING

IC CIRCULATION DESK

INFINITY SHELVING

MAKERSPACE



BEST SELLERS



MAKER INVENT TABLE

MAKER IDEA BOARD

ALL-WELDED TABLE

LOUNGE



BEST SELLERS



MOTIV SOFT SEATING

MOTIV OCCASIONAL TABLE

BLENDER SOFT SEATING



## PRODUCT HIGHLIGHTS



### SURFACE / EDGE

#### HIGH-PRESSURE LAMINATE

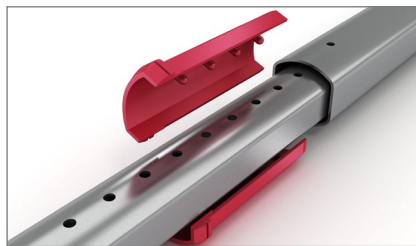
- Scratch, wear, heat, & moisture resistant
- Non-porous surface withstands frequent cleaning & disinfectant protocols

#### HIGH-DENSITY FIBERBOARD

- 100% post-consumer super-compressed wood composite with moisture resistant phenolic backing

#### EDGE BANDING

- 3mm impermeable, flexible PVC applied with aircraft-grade EVA hot-melt adhesive to achieve tightest possible seal between surface & edge



### LEGS / FRAMES

#### PARATUBE

- Proprietary flattened-oval steel tube that provides the most rigid structure for legs & frames

#### 8-POINT BEZEL SLEEVE

- Patented 8-point bezel sleeve provides a system to easily adjust leg height while increasing the strength of the connections
- Polypropylene design adds accent color to the leg for functional, aesthetic appeal



### CHAIR SHELLS

#### READY CHAIR

- Gas-assist polypropylene shell creates a flexible back that allows for 18° of controlled flex
- Sleek chamfered edge increases leg comfort & reduces strain

#### EMOJI CHAIR

- 3 distinct shell designs highlight Sensory Ergonomics for each age range
- Hole patterns on each chair creates proper air flow & narrow mid-section allows for 4-way sitting



### TABLE / DESK CONNECTIONS

#### STEEL THREADED INSERTS

- All table / desk legs connect to the surface using 6 steel threaded inserts
- Greatly increases the durability of the connections & simplifies assembly

#### STEEL GUSSET BRACE

- Full gusset brace creates superior structural integrity compared to wire braces & increases overall stability of the table / desk



### SHELVING

#### INFORMATION COMMONS

- IC Shelving has steel ParaTube outer frame creating a solid, rigid structure that can withstand significant book weight
- Decorative side panels are available in multiple materials & colors to add aesthetic appeal

#### INFINITY

- Fiberboard shelving is reinforced with steel brackets at each connection point
- Classic appearance complements traditional & modern library designs



### SOFT SEATING

#### MOTIV

- Full wood inner-frame with reinforced steel base for increased durability
- High-density foam cushions with hundreds of choices of durable textiles in a wide range of colors & patterns

#### BLENDER

- 95lb ILD high-density foam core with 3/4" plywood base & nylon glides
- Double-stitched upholstery available in a huge array of durable colors & patterns

## THE RIGHT FIT



12"  
EARLY LEARNING - PRE-K



14"  
KINDERGARTEN - 1<sup>ST</sup> GRADE



16"  
2<sup>ND</sup> - 4<sup>TH</sup> GRADE



18"  
5<sup>TH</sup> - 12<sup>TH</sup> GRADE



ELEMENTARY HEIGHT  
16" - 24" H



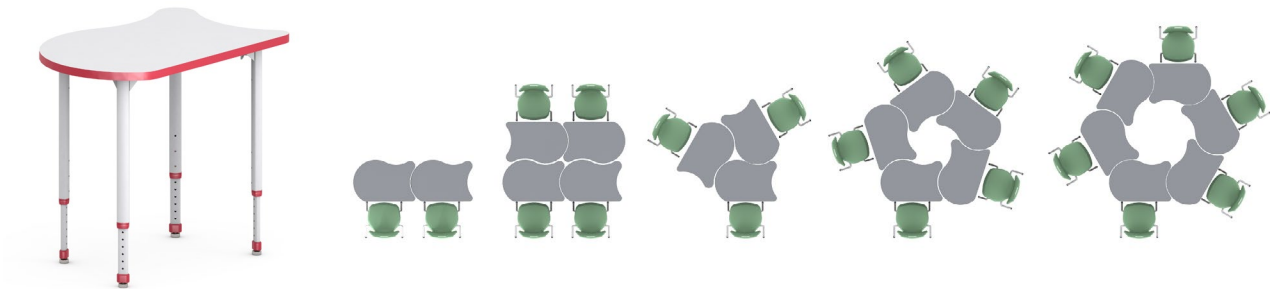
STANDARD HEIGHT  
24" - 34" H



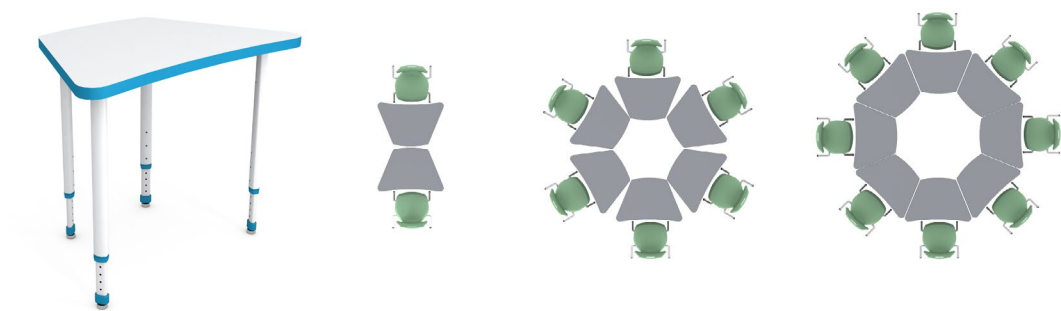
GIRAFFE HEIGHT  
24" - 38" H

# COLLABORATIVE CONFIGURATIONS

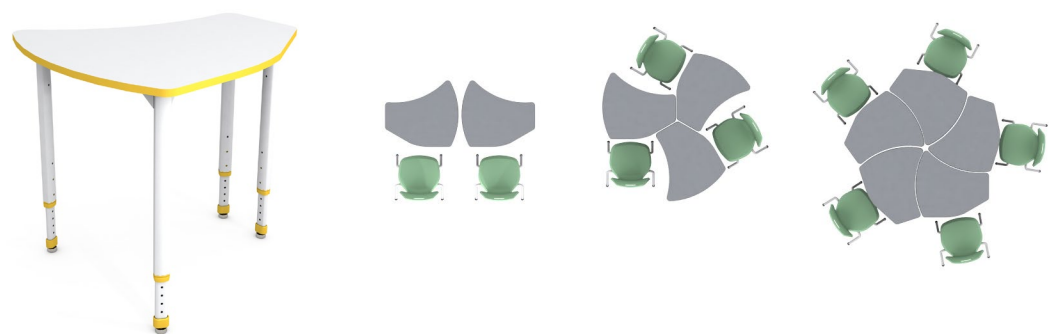
KOI



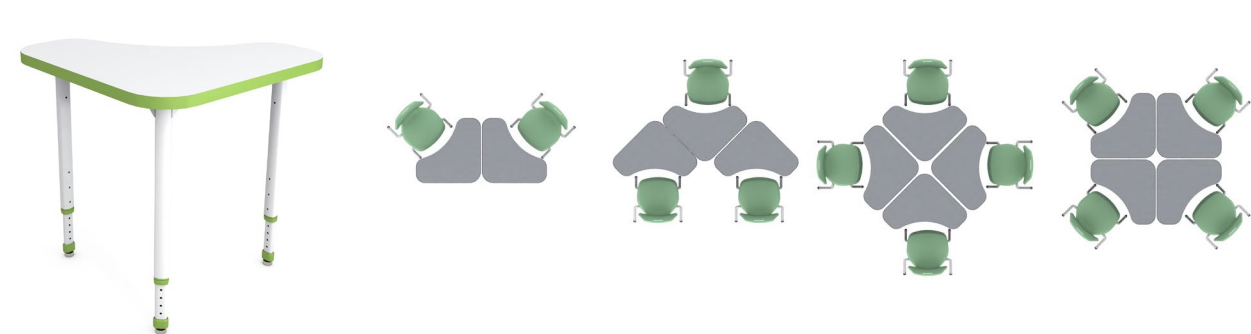
TRAPEZOID



TESLA

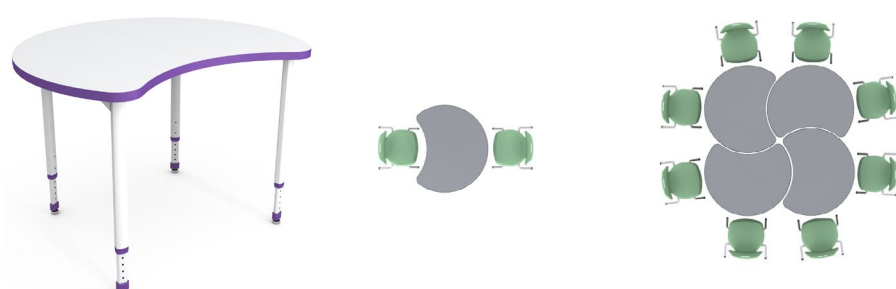


STEALTH

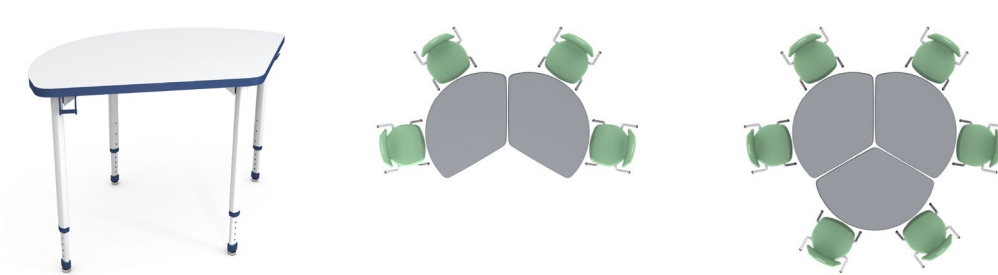


# COLLABORATIVE CONFIGURATIONS

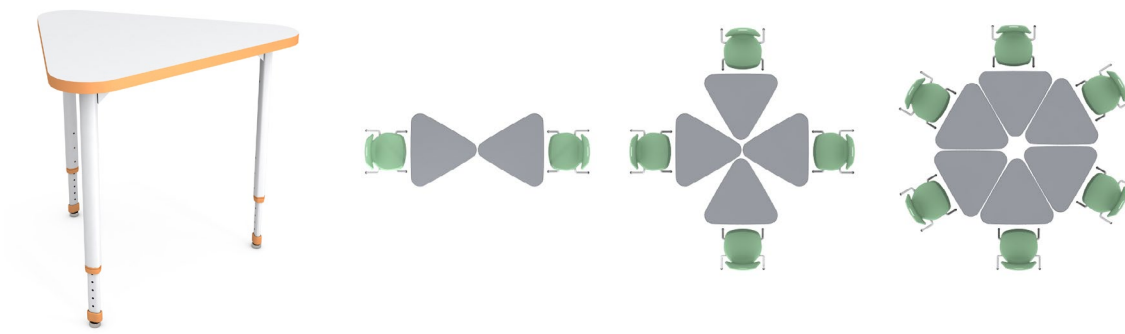
PACMAN



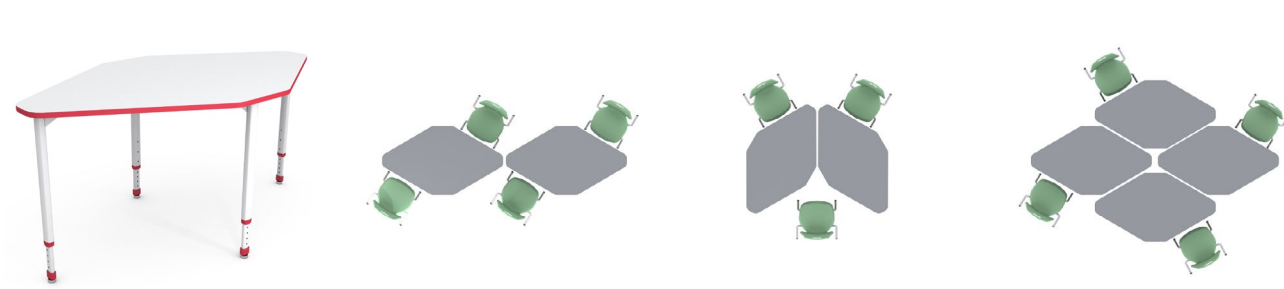
WEDGE



POINT

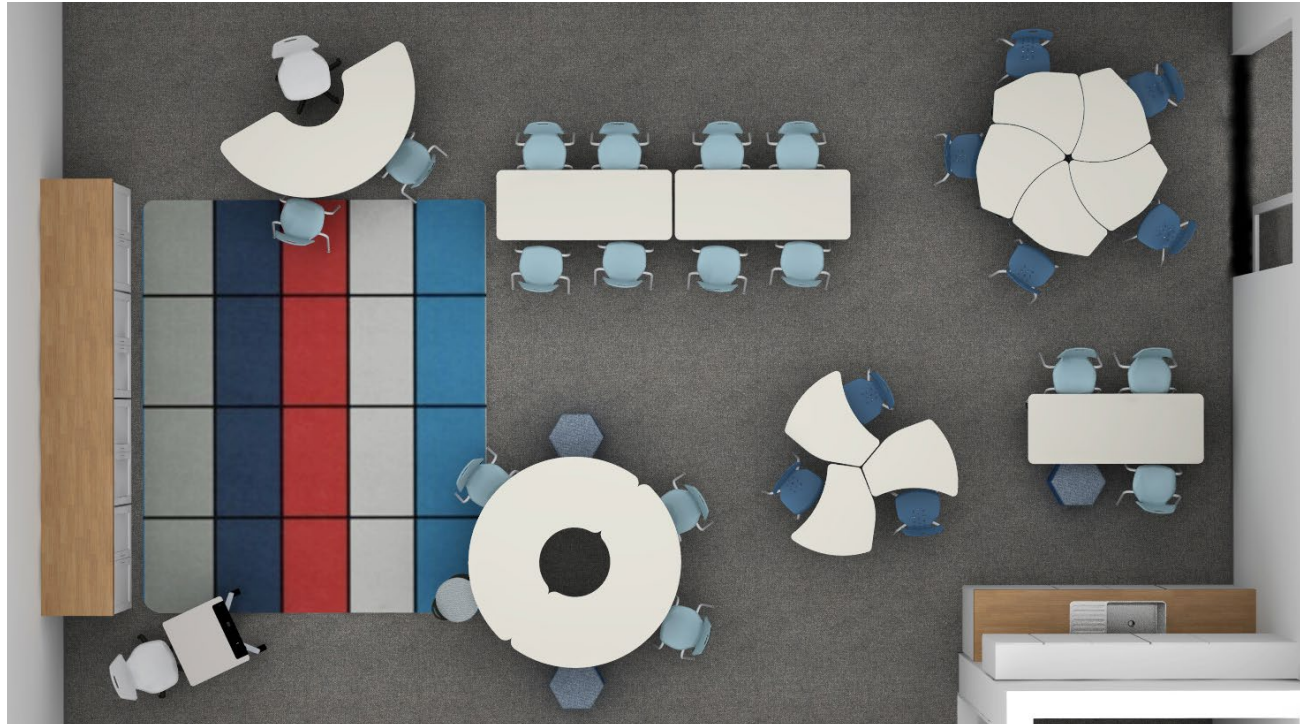


SAPPHIRE





## DESIGN SERVICES



Paragon offers full design, layout, & rendering services for all major projects. We have an in-house interior design team that is ready to bring your vision to life!



**CET** COMMERCIAL INTERIORS



AUTODESK  
REVIT



**AutoCAD**



## QUICK SHIP FURNITURE



Furnish your whole classroom with Paragon Quick Ship! With options for 5 Day, 7 Day, 10 Day, & 15 Day shipping, Paragon has you covered when it's crunch time. Scan the QR code for more info on Paragon Quick Ship furniture:



EMOJI CHAIR



KOI DESK



READY CHAIR



TEACH-IT DESK



EMOJI TASK CHAIR



CROSSFIT MOTION DESK



OINGO STOOL



READY TASK CHAIR



CROSSFIT STORAGE



FILE-IT FILING CABINET



## THE PARAGON PROMISE

### CUSTOMER EXPERIENCE

- Paragon is a solution driven, customer centric company that prioritizes our dealers and end users needs and partners from conception to installation and beyond.
- We strive to engage with our partners in upholding our core values: authenticity, trust, accountability, collaboration, and passion for the work we do.
- Personalized approach to customer service with quick response times, transparency and proactiveness in providing a unique customer experience.

### PRODUCT QUALITY

- Paragon conducts its own material testing. In-house testing allows for tighter quality control throughout the product development lifecycle, to ensure compliance with industry standards and regulations.
- Paragon also sends all products out for 3rd-party testing and meets or exceeds all ANSI / BIFMA safety standards set for Furniture Standards in Educational Facilities.
- Paragon is a proud manufacturer of high-quality products that are essential for building customer trust, maintaining a competitive edge, and ensuring long-term business success.

### INNOVATION

- Innovative product development focused on sensory ergonomics to design products that consider how users perceive and interact with them through their senses to create the ideal learning environment.
- Paragon creates and/or improves existing products to meet the evolving needs and desires of our students and teachers by incorporating novel technologies, features, and design elements.
- Paragon's meticulous attention to detail, from the signature eight-point connect bezel system to our edge banding adhesive, makes Paragon second to none in product design and innovation.

### SHIPPING

- From PO receipt to out-of-the-door shipping, Paragon can manufacture products in as little as six weeks. Check out our Quick Ship Program for a quicker turnaround time!
- Paragon products are made to order and drop shipped to the end user.
- Pre-paid and added freight options are available.

### WARRANTY

- As a furniture manufacturer, we stand behind our craftsmanship and pledge to do everything we can to resolve any issues you may have within our warranty terms as quickly as possible
- Paragon Furniture, Inc. ("Paragon") provides a lifetime structural warranty against defects, for the life of the product
- Lifetime warranty on chair/desk/table frames











Since 1984, Paragon has been designing & manufacturing school furniture in the USA, and more specifically, in Arlington Texas. We believe in the power of space to transform the educational experience & the furniture we make is our contribution to that cause. By keeping the majority of our manufacturing at our own facility and by partnering with trusted sources for raw materials & component parts, we're able to control the quality of our furniture at every level. Paragon aims to make schools awesome for all students & teachers, and we're proudly doing it right here in Texas.

## CONTACT

### SALES & SUPPORT TEAM

**BEN VARDEH - EAST REGION SALES MANAGER**  
bvardeh@paragoninc.com

**KATIE POOL - BRAND MANAGER**  
kpool@paragoninc.com

**AMMIE HILL - CENTRAL REGION SALES MANAGER**  
ahill@paragoninc.com

**GINA GIBSON - DIRECTOR OF CUSTOMER EXPERIENCE**  
ggibson@paragoninc.com

**SHANA OSBORN - WEST REGION SALES MANAGER**  
sosborn@paragoninc.com

### SALES INQUIRIES / QUOTE REQUESTS

quotes@paragoninc.com

## BOOK A VIRTUAL TOUR

Check out the Paragon factory and showroom tour live from anywhere in the world! Book a Virtual Showroom Tour with us & someone from our Sales Team will take you on a virtual tour and answer any questions you have about Paragon, our furniture, and our manufacturing process. Use the QR code or link below to book your tour today:



[PARAGONINC.COM/VIRTUAL-TOUR](https://paragoninc.com/virtual-tour)

**PARAGON™**  
F U R N I T U R E

2224 East Randol Mill Rd,  
Arlington, Texas 76011  
(800) 451-8546  
[paragoninc.com](https://paragoninc.com)